



BY APPOINTMENT TO
HER MAJESTY THE QUEEN
PHILATELISTS
STANLEY GIBBONS LTD
LONDON

STANLEY GIBBONS

LONDON 1856

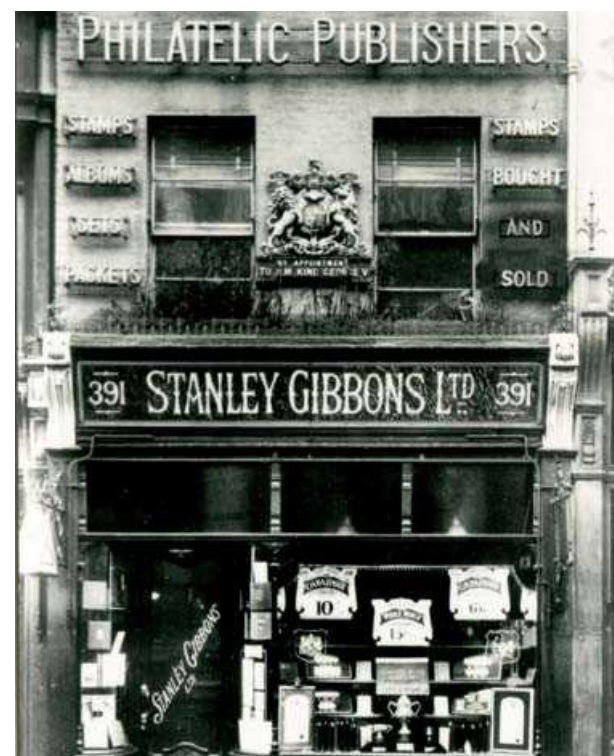
Summer 2019



399 Strand, WC2R 0LX, London

Please call 020 7557 4413 | Email gb@stanleygibbons.com

www.stanleygibbons.com



INTRODUCTION

Dear Collector,

Welcome to our latest brochure. We've been busy over the last couple of months and have an impressive selection of new material available for you to view. Noteworthy mention goes to the very attractive George V essays by the Waterlow staff artist, L.P. Fryer, on page 40 and 44. We've also included a selection of mint SG43's, please do get in touch if you can't find the plate you are looking for, we do have more in stock.

Should you wish to discuss any items or are seeking advice on your collection, we would be delighted to hear from you. Our contact details are on the next page or you can also use the enclosed order form and send it to the printed address. As always our stock is continually changing so please do check our website or provide us with your wants list to receive direct offers as soon as new items arrive.

Finally, we hope to see you at our twice yearly get together with the Great Britain Philatelic Society (GBPS). The summer edition takes place on Wednesday August 7th from 6pm - 8pm. The usual format will follow with collectors invited to bring their own material to display and refreshments will be served. Please email gb@stanleygibbons.com if you plan to attend. If you can't make it to 399 Strand, we hope to see you at the at either the York stamp and coin show 19th - 20th, July and Singpex 2019, 31st July - 4th August, Singapore.

Best wishes,

Team GB

MEET THE GREAT BRITAIN TEAM



MICHAEL BARRELL
Great Britain Specialist

mbarrell@stanleygibbons.com | +44 207 557 4456



SCOTT BRADLEY
Great Britain Specialist

sbradley@stanleygibbons.com | +44 207 557 4426



VINCE CORDELL
Senior Philatelic Specialist

vcordell@stanleygibbons.com | +44 207 557 4414



VICTORIA LAJER
Managing Director, Philately

vlajer@stanleygibbons.com | +44 207 557 4464



1

SG DP20(3)b 1840 1d Rainbow trial (State 3b). Very fine imperforate four margin top marginal example printed in dull blue on stout white wove paper. Spec. DP20(3)b. P11205133 £2250



2

1839 1d Treasury competition essay by Charles Whiting. Very fine four margin example printed in blue and red using the congrue method of interlocking printing plates. Scarce. 2010 BPA Cert. G1564923 £1250



3

SG DP20d 1840 1d Rainbow trial (State 3). Very fine unused bottom marginal example printed in dark olive green on thick bluish laid paper dipped in prussiate of potash showing tiny dash in lower right hand corner square from position R. 3/2. Scarce. Spec. DP20(3)e. Ex. "Verus". P14517184 £3000



4

SG 3 1840 1d Grey black Pl. 1a. Very fine used four margin right hand marginal example lettered LL with part sheet inscription, neatly cancelled by a red MC. Most attractive and very scarce so fine. P06712991 £1250



5

SG 3 1840 1d Grey black Pl. 1a. Very fine used four margin example lettered DD showing moderate plate wear, neatly cancelled by a crisp red MC. Spec. AS2. P190002761 £400



6

SG 3 1840 1d Grey-black Pl. 1a (Very worn). Very fine used good to large four margin example lettered RH, neatly cancelled by a red MC and showing significant plate wear. Spec. AS3. P190006605 £425



7

SG 2 1840 1d Black Pl. 1b. Superb used large four margin example lettered AI, beautifully cancelled by a crisp vibrant red MC. Most attractive. Spec. AS5. P190004902 £575



8

SG 2 1840 1d Black Pl. 1b. Very fine used large four margin example lettered JF, showing guide lines in "J" square, neatly cancelled by a crisp red MC. Most attractive. Spec. AS5. P190004901 £475



9

SG 2 1840 1d Black Pl. 1b. Very fine used large to very large four margin example lettered CA, neatly cancelled by a crisp red MC. Spec. AS5. P190004896 £450



10

SG 2 1840 1d Black Pl. 1b. Very fine used four margin example lettered OE, neatly cancelled by a red MC. Spec. AS5. P190003081 £375



11

SG 2 1840 1d Black Pl. 2. Superb used very large four margin right hand marginal vertical pair lettered DL-EL, neatly cancelled by crisp red MC's. Scarce in this vertical format. Spec. AS15. P12308329 £1250



12

SG 2 1840 1d Black Pl. 2. Superb used enormous four margin example lettered OL, beautifully cancelled by a crisp red MC. An exceptional example. Spec. AS15. P190004903 £850



13

SG 2 1840 1d Black Pl. 2. Superb used four margin example lettered OC, neatly cancelled by a crisp red MC. Spec.AS16. P190003698 £450



14

SG 2 1840 1d Black Pl. 3. Very fine used four margin example lettered SC, neatly cancelled by a red MC. Spec.AS20. P190006606 £375



15

SG 2 1840 1d Black Pl. 4. Very fine used four margin example lettered FI, neatly cancelled by a red MC. Spec.AS23. P190006633 £425



16

SG 2 1840 1d Black Pl. 4. Very fine used large four margin example lettered TG, neatly cancelled by a crisp centrally struck black MC. Spec.AS23. P190004907 £400



17

SG 1 1840 1d Intense black Pl. 6. Very fine used good to large four margin example lettered FK, neatly cancelled by red MC's. Spec.AS40 P190006638 £425



18

SG 2 1840 1d Black Pl. 7. Very fine used good to large four margin example lettered NB, neatly cancelled by a red MC. Spec.AS44. P190006639 £350



19

SG 2 1840 1d Black Pl. 8. Fine used close to good four margin example lettered CJ, cancelled by a black MC. Spec.AS46. P190007144 £225



20

SG 2 1840 1d Black Pl. 2. Superb used four margin example lettered IB, beautifully cancelled by a complete crisp red MC. An exceptional example. Spec.AS15. P190007579 £850



21

SG 2 1840 1d Black Pl. 10. Very fine used good to large four margin example lettered OI, neatly cancelled by a crisp black MC. A lovely example of this difficult plate. Spec.AS66. P190005032 £800



22

SG 6 1840 2d Pale-blue Pl. 1. Superb used four margin example lettered HA, neatly cancelled by a crisp black distinctive Greenock MC. Spec. DS6va. P190007150 £1500



23

SG 6 1840 2d Pale blue Pl. 1. Very fine used close to large four margin example lettered PH, neatly cancelled by a crisp black MC with a small part additional MC at right. Spec. DS6. P189014990 £675



24

SG 7 1841 1d Red-brown Pl. 10. Superb used large four margin example lettered OC showing stage 3 "O" flaw, neatly cancelled by a crisp upright black MC. Spec.AS69. P190007587 £190



25

SG 7var 1841 1d Red brown Pl. 11. Very fine used four margin example lettered MI, neatly cancelled by a crisp strike of the distinctive Wotton-under-Edge MC in black. A lovely example of this rare distinctive MC. Spec. AS74ue. Ex. Buranasombati. 1986 RPS Cert. **G1564354 £4750**



26

SG 10 1841 1d Deep red-brown Pl. 18. (Paper mostly well blued). Very fine used good to large four margin block of four lettered JH-KI, each stamp neatly cancelled by a black MC. Scarce multiple of this difficult plate. Spec. BS7. **P190007345 £750**



27

SG 8 1841 1d Red-brown Pl. 20. Superb used close to large four margin example lettered CC, neatly cancelled by a crisp black MC. Spec. BS9. **P190003107 £60**



28

SG 8 1841 1d Red-brown Pl. 21. Superb used close to large four margin example lettered QH, neatly cancelled by a crisp Black MC. Spec. BS10. **P190003333 £60**



29

SG 8l 1841 1d Red brown Pl. 22. Very fine used huge four margin right hand marginal example lettered GL showing part sheet inscription. Neatly cancelled by a blue MC. Spec. BS1 lsc. 1989 RPS Cert. **P178011033 £475**



30

SG 8var 1841 1d Red brown Pl. 26. A superb unused large four margin imperforate corner marginal imprimatur lettered AL, showing part sheet inscription and plate number "26". Unique. Ex. Bates (1934). **P10115069 £2750**



31

SG 8 1841 1d Red-brown Pl. 27. Superb used good to huge four margin example lettered KJ, neatly cancelled by a complete strike of a black MC. Spec. BS16. **P178010750 £70**



32

SG 8 1841 1d Red-brown Pl. 29. Very fine used four margin example lettered SL showing squat letter "S" variety, cancelled by a black MC clear of variety. Spec. BS18b. **P190007361 £90**



33

SG 8 1841 1d Red-brown Pl. 30. Very fine used close to good four margin example lettered RD showing P converted to R (hand-cut tail) variety, cancelled by a black MC clear of variety. Spec. BS19d. Cat £200. **P190007362 £125**



34

SG 8 1841 1d Red-brown Pl. 30. Very fine used four margin example lettered GJ, neatly cancelled by a crisply struck black MC. Spec. BS19. **P190007336 £60**



35

SG 8m 1841 1d Red-brown Pl. 32. Very fine used good to large four margin example lettered SD showing "Blur in letter square" variety, neatly cancelled by a crisp black London No. 5 MC. Spec. BS21ue. **P190003335 £175**



36

SG 8 1841 1d Red-brown Pl. 33. Very fine used four margin example lettered IG, neatly cancelled by a crisp black MC. Spec. BS22. **P190003198 £60**



37

SG 8 1841 1d Red-brown Pl. 34. Very fine used good to enormous four margin example lettered TL, neatly cancelled by a complete, upright black distinctive York MC. A very attractive and presentable example of this distinctive cancellation, scarce so fine. Spec. BS23tx. P178005638 £750



38

SG 8 1841 1d Red-brown Pl. 34. Very fine used four margin example lettered IG, neatly cancelled by a crisp black Scottish thin lined MC. Spec. BS23ty. P190003339 £90



39

SG 8 1841 1d Red-brown Pl. 34. Very fine used four margin example lettered FD, neatly cancelled by a complete upright black MC. Spec. BS23. P190007334 £60



40

SG 8m 1841 1d Red-brown Pl. 35. Very fine used good to large four margin example lettered LD, neatly cancelled by a crisp black London No. 2 MC. Spec. BS24ub. P190003337 £150



41

SG 8m 1841 1d Red-brown Pl. 39. Very fine used four margin example lettered LA, neatly cancelled by a crisp black London No. 10 MC. Spec. BS26B/uj. P190003338 £250



42

SG 8 1841 1d Red-brown. Very fine used large four margin example lettered AH, cancelled by a Berwick "66" numeral. P190007329 £35



43

SG 9 1841 1d Pale red brown Pl. 60. (Worn Plate). Exceptionally fine and fresh unused o.g. huge four margin example lettered CB. Superb quality. P190007590 £675



44

SG 8 1841 1d Red-brown Pl. 61. Very fine used large four margin example lettered FC, cancelled by a Bedford "61" numeral. Spec. BS30. P190007332 £35



45

SG 8var 1841 1d Red brown Pl. 64 Imprimatur. Very fine four margin example lettered FL, one of only 22 possible examples from this plate. Ex. The Royal Philatelic Collection. 2004 RPS Certificate. G1565084 £1000



46

SG 8 1841 1d Red-brown Pl. 80. Very fine used large four margin example lettered EE, cancelled by a Whitehaven "877" numeral. Spec. BS29. P190007330 £35



47

SG 12 1841 1d Orange-brown Pl. 81. Very fine used good to huge four margin example lettered KJ, cancelled by a Newbury "544" numeral cancellation. A presentable example of this difficult shade. Spec. B1 (6). P190007337 £195



48

SG 8p 1841 1d Red brown Pl. 86. Superb used close to huge four margin example lettered MF, neatly cancelled by a crisp, blue London District "41" numeral. Spec. BS29xb. P178004005 £250



49

SG 8 1841 1d Red-brown Pl. 89. Very fine used four margin example lettered FB, cancelled by a London City "7" numeral. Spec. BS30.

P190007331 £35



50

SG 8var 1841 1d Red brown Pl. 26. A superb unused large four margin imperforate corner marginal imprimatur lettered AL, showing part sheet inscription and plate number "26".

Unique. Ex. Bates (1934). P10115069 £2750



51

SG 8p 1841 1d Red brown Pl. 96. Very fine used good to large four margin example lettered FH, neatly cancelled by a crisp, blue Llanely "469" numeral. Wonderful colour combination. Spec.

BS3 1xb. P190007352 £225



52

SG 8j 1841 1d Red-brown Pl. 107. Fine used four margin example lettered SE showing inverted "S" variety, cancelled by a small part numeral. minute surface scuff above S square nevertheless a presentable example of this variety on this scarce plate Spec. BS32ca. Cat £800. P190007365 £175



53

SG 8 1841 1d Red-brown Pl. 109. Very fine used four margin example lettered RH showing constant variety in "R" square, cancelled by a Cuckfield "232" numeral. Spec. BS32j.

P190007369 £45



54

SG 8i 1841 1d Red brown Pl. 173. (Treasury roulette trial). Superb used example lettered BJ, neatly cancelled by a crisp London District "74" numeral. A spectacular item of the utmost rarity. Spec. B2(1)aa. 2011 BPA Cert.

P11213438 £4750



55

SG 14 1841 2d Blue Pl. 3. Superb unmounted o.g. four margin example lettered EB accompanied by a 2006 BPA Certificate. Very scarce so fine. P190007152 £5000



56

SG 14 1841 2d Blue Pl. 3. Superb used four margin left hand marginal example lettered MA, showing full deckle edge selvage and inscription, neatly cancelled by a black MC. An exceptional example. G1673864 £2500



57

SG 14 1841 2d Blue Pl. 3. Very fine used good to huge four margin example lettered QJ showing "J" flaw, neatly cancelled by a London City "15" Numeral. Spec. ES11i. P190007372 £95



58

SG 17var 1854 1d Red brown Pl. 200. Superb unused top right hand corner marginal imperforate imprimatur lettered AL, showing part sheet inscription and plate number "200". Rare. Ex. Clark (1946). G1454880 £2750



59

SG 17wi 1854 1d Red brown Pl. 164 (Wmk. Inverted). Very fine used example lettered FG, neatly cancelled by a the numeral section of a Liverpool "466" spoon. Scarce watermark variety so fine. P190007374 £200



60

SG 17 1854 1d Red-brown Pl. 191. Very fine used example lettered RK showing constant variety "Vertical stroke in K square", cancelled by a Leeds sideways duplex. Spec. C1(1)j. P190007405 £45



61

SG 19 1855 2d Deep blue Pl. 4. Fine used horizontal pair lettered TG-TH cancelled by London City Office "16" numerals, TH showing clear evidence of the listed re-entry in upper corner squares and a distinct second frame line at left. Spec. F1(1)g. Cat. £350+
P190005822 £250



62

SG 20 1855 2d Pale blue Pl. 4. Very fine used horizontal pair lettered QC-QD cancelled by a Jersey "409" numeral and a French "1441" lozenge (small figures) of Granville. Unusual.
P190005817 £150



63

SG 21 1855 1d Red-brown Pl. 11 (Wmk. SC, Perf. 16). Very fine used example lettered CH, neatly cancelled by a small part Scottish type numeral leaving a clear profile. A lovely example of this difficult plate. Spec. C4(1).
P167010730 £170



64

SG 24 1855 1d Red-brown Pl. 16. (Wmk. Small Crown, Die II, Alphabet II, Perf 14). Very fine and fresh unused o.g. example lettered BH. A wonderful fresh example of this difficult plate, lovely fresh impression. Spec. C3(1).
P190003341 £1250



65

SG 29 1856 1d Red-brown Pl. 35. Very fine unused o.g. block of four lettered QC-RD, with lovely fresh colour and gum. Spec. C8(1).
P190007593 £1250



66

SG 29var 1855 1d Red brown Pl. 6. Very fine unused o.g. block of six lettered JD-LE bearing three strikes of the "Frank Ives Scudamore/Chief Examiner" handstamp. This rare handstamp was used on sheets that were earmarked for destruction and thus very few examples survive. Spec. C6(1)var.
P189015616 £1200



67

SG 29 1855 1d Red brown Pl. 47. Very fine used vertical pair lettered IC-JC, neatly tied to piece by two crisp strikes of the Leith "221" type 4 experimental duplex for MR. 24. 1857. Scarce plate. Spec. C8(1) **P178005732 £150**



68

SG 33 1857 1d Orange-brown Pl. 27. Very fine used example lettered OG, cancelled by a small part Scottish numeral. Spec. C8(5).
P190007409 £50



69

SG 33 1857 1d Orange-brown Pl. 44. Very fine used example lettered HB, neatly tied to a small piece by a Hull "383" type C/R1 duplex for FE. 25. 1857. Lovely colour. Spec. C8(5).
P178004753 £65



70

SG 33 1857 1d Orange-brown Pl. 44. Very fine used example lettered NC, neatly tied to a small piece by a "THE CROSS" type V Scots local cancellation. Alcock rarity B. Spec. C8(5). P178004757 £70



71

SG 33var 1857 1d Orange-red Pl. 47. Very fine used example lettered FC, neatly tied to piece by a crisp bluish black Glasgow "159" Madeleine Smith experimental duplex (type 2, state 2) for AP. I. 1857. Spec. C8(7). P178005935 £120



72

SG 34 1855 2d Blue Pl. 5. Superb used example lettered GK, neatly cancelled by a crisp black Stirling cds for SE12. 1857. An attractive example, scarce so fine. Spec. F6(1). P190003342 £175



73

SG 36 1857 1d Rose red Pl. 59 (Perf. 16). Very fine used example lettered CD neatly cancelled by a Brighton "132" sideways duplex. Spec. C11. P190007410 £75



74

SG 38 1857 1d Pale red Pl. 43 (Transitional issue on cream paper). Very fine used example lettered MI, neatly tied to piece by a Derby "242" type II sideways duplex for AP. 30. 1857. Spec. C9(3). P178004431 £60



75

SG 38 1857 1d Pale red Pl. 43 (Transitional issue on cream paper). Very fine used example lettered IA, neatly tied to piece by a crisp Dublin "186" type A3 spoon duplex for AP. 8. 1857. Spec. C9(3). P178004394 £70



78

SG 38var 1857 1d Pale rose Pl. 46 (Transitional issue on cream toned paper). Very fine used example lettered SH, neatly tied to piece by a Leith "221" type 4 experimental duplex for AU. 12. 1857. Scarce plate. Spec. C9(4). P190007450 £95



76

SG 38 1857 1d Pale red Pl. 44. Very fine unmounted o.g. example lettered EC. Spec. C10(2). P190007673 £125



77

SG 38 1857 1d Pale red Pl. 44. Very fine unused o.g. example lettered DD. Spec. C10(2). P190007666 £100



78

SG 39var 1863 1d Pale rose pink Pl. 53. Superb unused o.g. example of this very rare plate lettered CC. Ex. The Osborne and Tonna block of 48, the only mint piece of this plate ever recorded. Spec. C10(6). G1671668 £5500



80

SG 40var 1862 1d Pale rose red Pl. R15. Very fine unmounted o.g. example lettered BJ. Spec. C13(1). P190003366 £250



81

SG 40var 1862 1d Rose red Pl. R16. Very fine unmounted o.g. block of four of this difficult reserve plate lettered QG-RH. Scarce multiple so fine. Spec. C13(3). P190007158 £1000



82

SG 40wi 1857 1d Rose red Pl. 44. (Wmk. Inverted Type I). Very fine unmounted o.g. example lettered HG. An attractive example of this difficult watermark variety. Spec. C10(5)e. 2013 RPS Cert. P190003369 £250



83

SG 40 1857 1d Rose red Pl. 56. Very fine used example lettered SH, neatly tied to small piece by a crisp Spalding cds for MR. 27. 1860. Most attractive. P190005180 £40



84

SG 43 1864 1d Rose-red Pl. 80. Very fine unmounted o.g. example lettered GC. P189017971 £80



85

SG 43 1864 1d Rose-red Pl. 84. Very fine unmounted o.g. example lettered HJ. Scarce plate. P189017975 £100



86

SG 43 1864 1d Rose-red Pl. 85. Very fine unmounted o.g. example lettered TJ. P189017978 £90



87

SG 43 1864 1d Rose-red Pl. 95. Very fine unmounted o.g. example lettered FL. P189017995 £90



88

SG 43 1868 1d Rose-red Pl. 107. Very fine unmounted o.g. example lettered BH. P189018060 £100



89

SG 43 1868 1d Rose-red Pl. 111. Very fine unmounted o.g. example lettered HC. P189018069 £85



90

SG 43 1869 1d Rose-red Pl. 123. Very fine unmounted o.g. example lettered NB. P189018120 £75



91

SG 43 1869 1d Rose-red Pl. 131. Very fine unused o.g. example lettered FA. P189018125 £85



92

SG 43 1870 1d Rose-red Pl. 142. Very fine unmounted o.g. example lettered PI. Scarce plate. P189018161 £125



93

SG 43 1871 1d Rose-red Pl. 146. Very fine unused o.g. example lettered HI. P190000090 £40



94

SG 43 1871 1d Rose-red Pl. 148. Very fine unmounted o.g. example lettered TE. P190000094 £75



95

SG 43 1872 1d Rose-red Pl. 154. Very fine unmounted o.g. example lettered CH. P190000146 £90



96

SG 43 1872 1d Rose-red Pl. 161. Very fine well centred unmounted o.g. example lettered KE. P190000162 £100



97

SG 43 1877 1d Rose-red Pl. 196. Very fine unmounted o.g. bottom marginal example lettered TE, showing part sheet inscription. P189009789 £100



98

SG 45 1858 2d Blue Pl. 9. Superb unused o.g. top left hand corner marginal block of 24 lettered AA-DF, lightly mounted on DC-DD only. Showing plate number "9" and a large portion of the marginal inscription. "Price 2d Per Label, 2/- Per Row of 12. 1/- Per Sheet. Place the Labels ABOVE the Address and Tow". A magnificent showpiece and one of the finest surviving multiples of this issue. Ex Sir Gawaine Baillie. P190005853 £9750



99

SG 45 1868 2d Blue Pl. 12. (Wmk. Large Crown Type II). Superb unmounted o.g. example lettered IJ. An attractive example, lovely deep colour and fresh gum. Spec. G2. P190007162 £3000



100

SG 46 1869 2d Blue Pl. 13. Very fine unmounted o.g. example lettered RH. Scarce. Spec. G3(1). P190007165 £425



101

SG 48 1870 1/2d Rose Pl. 9. Very fine used examples lettered IF, neatly tied to a small piece by a crisp cds section of a Paisley "277" duplex for JA. 31. 1872, clear of plate numbers. A wonderful used example of this difficult plate P190003371 £750



102

SG 48 1870 1/2d Rose Pl. 10. Superb unused o.g. well centred example lettered RC. Scarce so fine. P190004679 £130



103

SG 53as 1860 1 1/2d Rosy mauve Pl. 1. Superb unused o.g. example lettered SF, overprinted "SPECIMEN" type 2. Exceptional, vibrant colour. Very scarce so fine. Spec. G5s. P11200215 £1750



104

SG 53a 1860 1 1/2d Rosy mauve Pl. 1. Superb unused o.g. left hand marginal example lettered OA, with part sheet inscription "E 1 1/2d Per Label. 1s/6". An exceptional example, 2003 BPA Cert. **G0780080 £7750**



105

SG 60 1854 6d Purple (Wmk. Reversed). Very fine used huge four margin example neatly cancelled by a crisp London City "48" numeral. Most attractive. 2005 RPS Cert. **P190007322 £950**



106

SG 63s 1856 4d Carmine on thick blued highly glazed paper Pl. 1 (Wmk. Medium Garter). Superb unmounted o.g. example overprinted "SPECIMEN" type 2 vertically. Spec. J48(2)t. **G1674288 £1200**



107

SG 68 1856 6d Lilac (Wmk. Emblems). Very fine used well centred example, neatly cancelled by a Manchester "498" numeral. **P190007375 £75**



108

SG 72 1856 1s Green. Superb used example neatly cancelled by a crisp strike of a Glasgow cds for MY. 31. 1862. Lovely fresh colour, scarce so fine. **P190003477 £650**



109

SG 72 1856 1s Green. Superb used example neatly cancelled by a crisp strike of a Newcastle upon Tyne "545" numeral. **P190003478 £195**



110

SG 72b 1856 1s Green (Thick paper). Very fine used example of the thick paper variety showing watermark massively displaced and consisting of only two roses. Neatly cancelled by a crisp London "W/12" numeral. Lovely colour and very unusual. **P190005178 £400**



111

SG 83 1863 6d deep lilac Pl. 3. Very fine used example lettered MK, neatly cancelled by a part Dundee cds and small part numeral leaving the majority of the Queen's portrait clear. lovely deep colour. **P190005190 £110**



112

SG 82 1863 4d Pale red Pl. 4. Very fine used example lettered EJ, neatly cancelled by a small part numeral. **P190007379 £90**



113

SG 84 1862 6d Lilac Pl. 3. Very fine used right hand wing margin example lettered QH, neatly cancelled by a crisp black Swansea "763" numeral. **P178006232 £90**



114

SG 87 1862 9d Straw Pl. 2. Very fine and fresh unused large part og. example lettered KL. Lovely vibrant colour. Cat. £4000 **P190005078 £2500**



115

SG 87 1862 9d Straw Pl. 2. Very fine used left hand wing margin example lettered MI, neatly cancelled by a part London City "46" numeral. **P190007381 £250**



116

SG 88 1862 9d Bistre Pl. 3. (Hair lines). Very fine used well centred example of this rare "abnormal" issue lettered BL, neatly cancelled by a crisp Torquay "805" numeral leaving the hairlines clearly visible. Scarce, only 46 recorded used examples. Spec. J93.

P190003479 £9500



117

SG 90 1862 1s Green Pl. 12. Superb used well centred example lettered CK, neatly cancelled by a crisp London cds for FE. 1. 1864. Lovely colour, scarce so fine. P190007455 £375



118

SG 90a 1862 1s Green Pl. 12. Very fine used right hand wing margin example lettered KD, showing variety "K in circle" neatly cancelled by a crisp Liverpool duplex. Scarce variety rarely seen so fine. 2005 RPS Cert. G1671732 £1250



119

SG 93 1870 4d Dull vermilion Pl. 12. Very fine used example lettered KK, neatly cancelled by a crisp London cds for OC. 31. 1872.

P190005171 £80



120

SG 94 1872 4d Vermilion Pl. 13. Very fine used example lettered QJ, neatly cancelled by a Suez "BO2" numeral. Spec. Z56 P190006757 £35



121

SG 95 1869 4d Deep vermilion Pl. 11. Very fine and fresh unmounted o.g. example lettered PK. Superb vibrant colour, scarce so fine.

P190003482 £800



122

SG 95 1870 4d Deep vermilion Pl. 12. Very fine used left hand wing margin example lettered SG, cancelled by a small part Newcastle "545" numeral. P190007383 £45



123

SG 97var 1866 6d Lilac Pl. 6. Very fine unused o.g. imperforate imprimatur lettered TA. Very scarce, one of only 21 possible examples many of which are in institutional collections. Ex. "Verus". P14515712 £3750



124

SG 98 1865 9d Straw Pl. 4. (Wmk. Emblems). Very fine unused large part o.g. example lettered NC. A wonderful example of this very difficult stamp, lovely fresh colour. P190007324 £3750



125

SG 102 1872 3d Deep rose Pl. 8. Very fine used example lettered HA, neatly cancelled by a crisp Kings Town M. O. O. cds for JU. 24. 1872.

P190005158 £100



126

SG 103 1868 3d Rose Pl. 5. Very fine used right hand wing margin example lettered MD, neatly cancelled by a crisp Newcastle upon Tyne "545" numeral. P190007384 £35



127

SG 103 1871 3d Rose Pl. 7. Very fine used example lettered RG, neatly cancelled by two small part cds's leaving the Queen's portrait clear. Most attractive P190005162 £70



128

SG 103 1872 3d Rose Pl. 8. Very fine used example lettered QK, neatly cancelled by a crisp Liverpool cds for SP. 6. 1872.

P190005159 £65



129

SG 103 1872 3d Rose Pl. 9. Very fine used example lettered GF, neatly cancelled by a Cobham/Surrey cds for DE. 18. 1872.

P190005163 £70



130

SG 103 1873 3d Rose Pl. 10. Very fine unused o.g. left hand wing margin example lettered DI. An attractive example of this difficult plate.

P190003487 £875



131

SG 106 1867 6d Purple Pl. 6. Superb used example lettered HB, neatly tied to a small piece by a crisp Malta cds for DE. 28. 1868. Attractive overseas usage. Spec J75(3).

P190007390 £200



132

SG 109s 1870 6d Mauve Pl. 9. Very fine and fresh unused o.g. example lettered RG, overprinted "SPECIMEN" type 8. Scarce. Spec. J77t.

P189003780 £350



133

SG 109 1870 6d mauve Pl. 9. Superb unmounted o.g. example lettered GG. Very scarce so fine. 1990 BPA Cert.

P190005971

£950



134

SG 109 1870 6d Mauve Pl. 9. Superb used well centred example lettered FA, neatly cancelled by a crisp Kirkcaldy cds for MR. 9. 1872. Attractive Scottish usage.

P190003491 £125



135

SG 109 1870 6d Mauve Pl. 9. Very fine used example lettered GJ, neatly cancelled by a Suez "BO2" numeral. Spec. Z63

P190006758 £40



136

SG 117var 1872 1s Green Pl. 5 "Stock exchange forgery". Very fine used example of this famous forgery lettered EE, neatly tied to a small piece by a Stock exchange cds for JY. 26. 1872. Most attractive.

P190002720 £850



137

SG 117 1871 1s Green Pl. 5. Very fine used example lettered LF, cancelled by a Chester cds for JY. 10. 1872.

P190002637 £50



138

SG 115 1871 1s Deep green Pl. 6. Very fine used example lettered GJ, neatly cancelled by a crisp Woodbridge cds for SP. 19. 1872. Lovely deep colour.

P190005173 £70



139

SG 117 1871 1s Green Pl. 6. Very fine used right hand wing margin example lettered OH, neatly cancelled by a crisp Sheffield cds for DE. 28. 1872.

P190005175 £50



140

SG 117 1873 1s Green Pl. 7. Very fine used left hand wing margin example lettered LI, neatly cancelled by a crisp Blackburn cds for JU. 6.

1873. P190005176 £100



141

SG 118var 1867 2s Blue Pl. 1 (2nd Registration sheet). Superb unmounted o.g. top marginal example lettered AG showing part sheet marginal inscription. Very scarce, one of only 22 possible example many of which are in institutional collections. G1560712 £2850



142

SG 119 1867 2s Deep blue Pl. 1. Very fine used right hand wing margin example lettered HD, neatly cancelled by a Liverpool/Exchange cds for OC. 28. 1872. Lovely deep colour.

P190005182 £225



143

SG 119 1867 2s Deep blue Pl. 1. Very fine used horizontal pair lettered OB-OC, neatly cancelled by a crisp black Glasgow "159" duplex for MY. 10. 1872. Attractive Scottish usage. P190003494 £250



144

SG 120b 1867 2s Milky blue Pl. 1. Superb used example lettered BG, neatly cancelled by a crisp Glasgow cds for JU. 3. 1880. A spectacular example of this difficult shade.

P189005519 £2000



145

SG 122var 1872 6d Very deep chestnut Pl. 11. Very fine used example lettered KL, neatly cancelled by an upright Cardiff-Docks cds for JU. 21. 1872. Wonderful deep colour. Spec. J79(1). P190005181 £180



146

SG 122a 1872 6d Chestnut Pl. 11. Very fine and fresh unused o.g. example lettered SK. Scarce so fine. P190003495 £800



147

SG 122b 1872 6d Pale chestnut Pl. 11. Very fine used example lettered RB neatly cancelled by a Manchester Fish Market cds for OC. 1872.

P190002646 £75



148

SG 125 1873 6d Grey Pl. 12. Superb unused o.g. perfectly centred example lettered KF. Scarce so fine. 2017 RPS Cert. P190003496 £1900



149

SG 106 1867 6d Purple Pl. 6. Very fine and fresh unused o.g. example lettered MC. Some light gum creasing nevertheless lovely vibrant colour and a very difficult stamp to find so fine. Cat. £1900. P190005072 £1200



150

SG 125 1873 6d Grey Pl. 12. Very fine used example lettered DG, neatly cancelled by a Gibraltar "A26" numeral. Spec. Z49.

P190007460 £125



151

SG 128var 1878 10s Colour trial Pl. 1. Very fine imperforate example lettered BH printed on gummed watermarked paper in blue, overprinted "SPECIMEN" type 9. Most attractive. G1455341 £1750



152

SG 129 1878 £1 Brown Lilac Pl. I. Very fine well centred used example lettered BB, beautifully cancelled by a crisp Glasgow cds for AP. 27. 1882. Very rarely seen so fine.
G1674205 £4500



153

SG 132 1882 £1 Brown-lilac Pl. I (Blued paper). Superb used example of this rare stamp lettered FA, beautifully cancelled by a crisp Galashiels cds for OC. 3. 1883. A major rarity in this quality. 1974 RPS Cert. G0670012 £7500



154

SG 134 1882 5s Rose Pl. 4 (White paper). Very fine used well centred example lettered AC, beautifully cancelled by a crisp Netherton, Worc. cds for JA. 18. 1884. Most attractive.
P189013172 £3000



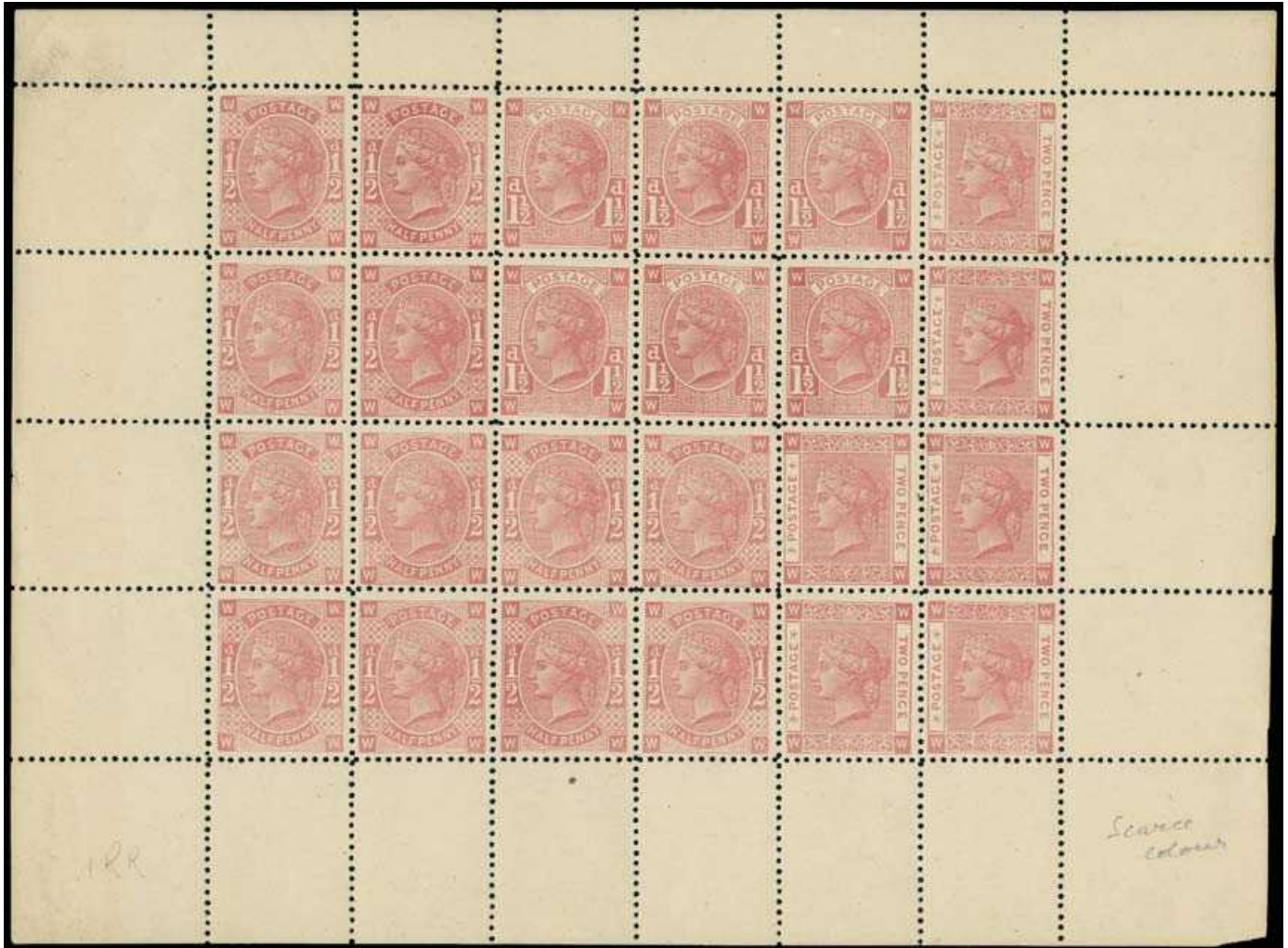
155

SG 136 1882 £1 brown-lilac Pl. I (White paper). Very fine used well centred example lettered CE, neatly cancelled by a crisp Colinton cds for FE. 29. 1884. Very scarce so fine. 2003 RPS Cert.
G1673807 £7500



156

SG 137 1882 £5 Orange Pl. I. Very fine used example lettered CK, neatly cancelled by a crisp Bath cds for JA. 25. 1900. Most attractive.
G1455347 £2950



157

1879 1/2d-2d Tender Essays. Superb unmounted o.g. se-tenant sheetlet of 24 (12x1/2d, 6x1 1/2d & 6x2d) printed in pale rose by Perkins Bacon. Very rarely seen this fine. P190006735 £850



158

SG 139 1875 2½d Rosy mauve Pl. I (White paper). Superb unmounted o.g. bottom marginal example lettered PJ, showing part marginal inscription. Very rarely seen so fine.

P190007179 £950



159

SG 141 1876 2½d Rosy mauve Pl. 6. Very fine used example lettered MB, neatly cancelled by a part duplex leaving portrait clear.

P190007413 £45



160

SG 141 1878 2½d Rosy mauve Pl. 13. Superb unmounted o.g. example lettered LB. Wonderful fresh colour and gum. 1998 RPS Cert.

P190003498 £700



161

SG 141 1876 2½d Rosy mauve Pl. 17. Very fine and fresh unused o.g. example lettered IC. Scarce plate.

P190007182 £1700



162

SG 142 1880 2½d Blue Pl. 19. Very fine used example lettered MC, neatly cancelled by a crisp Nottingham cds for DE. 8. 1880.

P190007414 £60



163

SG 142wi 1880 2½d Blue Pl. 19. (Wmk. Inverted). Fine used example lettered GF, cancelled by a Manchester "498" duplex for AU. 3. 1880. Scarce watermark variety. Cat £275.

P190003502 £195



164

SG 142 1880 2½d Blue Pl. 20. Very fine and fresh well centred unused o.g. example lettered JF.

P190005957 £575



165

SG 142 1880 2½d Blue Pl. 20. Superb used example lettered EC, neatly cancelled by a crisp Helensburgh cds for DE. 17. 1880.

P190003511 £75



166

SG 144 1875 3d Pale rose Pl. 17. Superb unmounted o.g. right hand wing margin, top marginal example lettered FD. Showing part sheet marginal inscription "10 Shillings per Sheet of 40". Copy of a 1997 BPA Certificate of a block of eight from which this single was taken.

P190005968 £795



167

SG 144 1875 3d Pale rose Pl. 17. Superb unmounted o.g. example lettered GC. Very scarce so fine. 1997 BPA Certificate of a block of eight from which this single was taken.

P190005965 £750



168

SG 147 1880 6d Grey Pl. 17. Superb unused o.g. right hand marginal example lettered LH. Very scarce so fine. 1981 RPS Cert.

G1674353 £50



169

SG 147var 1880 6d Grey Pl. 18 (Wmk. Spray). Very fine and fresh unused o.g. imperforate bottom marginal imprimatur lettered TK showing current number "593". A magnificent and unique positional example, the other plate number example AB remains on the imprimatur sheet in the Postal Museum archives. This plate was never issued on "Spray" watermarked paper and is only available as an imprimatur.

G1564981 £7000



170

SG 147 1874 6d Grey Pl. 13. Very fine used left hand wing margin example lettered DI, neatly cancelled by a Bradford "107" numeral and a red "PD" handstamp. Attractive combination.

P190007445 £45



171

SG 150 1875 1s Green Pl. 12. Superb used well centred example lettered BJ, neatly cancelled by a Blue Ashton Under Lyme cds for JY. 15. 1879.

Unusual. P190003520 £175



172

SG 150 1873 1s Green Pl. 8. Fine used example lettered CK, neatly cancelled by a St Thomas "C51" duplex. Spec. Z30. P190006761 £45



173

SG 150 1876 1s Green Pl. 13. Very fine used example lettered IG, neatly cancelled by a Panama "C35" numeral. Spec. Z104.

P190006759 £60



174

SG 152 1876 4d Vermilion Pl. 15. Very fine used example lettered SE, neatly cancelled by a complete crisp Radstock cds for JA. 29. 1877.

Lovely strong colour, scarce so fine.

P189011612 £500



175

SG 154 1880 4d Grey brown Pl. 17 (Wmk. Large Garter). Very fine and fresh unused o.g. example lettered IH, scarce so fine. 2010 RPS Cert. P10115432 £2800



176

SG 157 1881 2½d Blue Pl. 22. Very fine used example lettered SC, cancelled by a London Inland Branch "Fancy Geometric" squared circle datestamp for MR. 31. 1883. (Type IIB).

P190007417 £50



177

SG 157 1881 2½d Blue Pl. 23. Very fine used example lettered SF, cancelled by a London cds for AU. 3. 1883. P190007421 £35



178

SG 158 1881 3d Rose Pl. 21. Superb perfectly centred unmounted o.g. example lettered KK. Lovely fresh colour and gum. P190003521 £650



179

SG 160 1882 4d Grey-brown Pl. 18. Very fine used example lettered NH, neatly cancelled by a Liverpool P.L.O. (Packet Letter Office) cds for MY. 8. 1883. P189011915 £80



180

SG 162 1883 6d on 6d Lilac Pl. 18. Very fine used example lettered KJ, neatly cancelled by a St Mary Church cds for JA. 16. 1884. P190003531 £150



181

SG 167 1880 1 1/2d Venetian red. Very fine and fresh unmounted o.g. example. P190004848 £325



182

SG 168a 1880 2d Deep rose. Superb used example neatly cancelled by a crisp Selkirk cds for OC. 17. 1883. Lovely fresh colour. P190003552 £140



183

SG 169var 1881 5d Indigo Pl. I (Line Perf. 14). Very fine unused line perforated imprimatur mounted in a cardboard bevelled frame from the 1887 Stamp Committee presentation album. Only 36 albums were originally produced, many of which are in institutional collections or simply lost. Very rare. See Specialised Vol. 1 Catalogue pg. 257. 2006 RPS Cert. G1671671 £2750



184

SG 170s 1881 1d Lilac (Die I). Very fine unused o.g. top right hand corner marginal block of four overprinted "SPECIMEN" type 9. The top pair with a second strike of the handstamp across the two stamps. Very unusual. P190004852 £350



185

SG 172a 1881 1d Bluish lilac (Die II). Superb unmounted o.g. example of this difficult shade. Accompanied by a copy of a 2012 BPA certificate of a block of twelve from which this single was taken. Spec K8(2). P190003555 £650



186

SG 176s 1884 5s Rose on blue paper. Very fine unused o.g. well centered example lettered BB overprinted "SPECIMEN" type 9. Spec. K11s. Scarce. G1674220 £1600



187

SG 178 1884 2s6d Lilac. Very fine and fresh unmounted o.g. example lettered IB. P190003559 £725



188

SG 179 1884 2s6d Deep lilac. Very fine and fresh unused o.g. example lettered CD, lovely deep colour, scarce so fine. P190007682 £750



189

SG 181 1884 5s Crimson. Superb used example lettered LB, beautifully cancelled by a crisp Northampton cds for NO. 12. 1901. Wonderful vibrant colour. P189012217 £250



190

SG 182s 1884 10s Cobalt on white paper. Superb unmounted o.g. perfectly centred left hand marginal example lettered MA. Wonderful fresh colour and gum, scarce shade so fine. Spec. K14(1)u. P190003566 £3500



191

SG 183 1884 10s Ultramarine. Very fine used example lettered LD, neatly cancelled by a crisp Anerley Nr Station S. E. cds for NO. 28. 1893. Attractive. P190007696 £500



192

SG 185 1884 £1 Brown lilac (Wmk. Three Crowns). Very fine used well centred example lettered MD, neatly cancelled by a crisp Edinburgh cds for JA. 9. 1888. Very scarce so fine. 2009 RPS Cert. **G1565061 £3750**



193

SG 103 1873 3d Rose Pl. 10. Very fine used example lettered PC, neatly cancelled by a Blackpool cds for JY. 23. 1873. **P190005168 £100**



194

SG 104 1867 6d Lilac Pl. 6. Very fine used example lettered HA, cancelled by the numeral section of an Oldham "591" duplex. **P190007388 £90**



195

SG 187 1883 1/2d Slate-blue. Superb unmounted o.g. example. **P190002908 £50**



196

SG 187s 1884 1/2d Slate-blue. Very fine unused o.g. example overprinted "SPECIMEN" type 9. Spec. K17As. **P190007699 £50**



197

SG 188 1883 1 1/2d Lilac. Very fine used example lettered CH neatly cancelled by a Gloucester cds for JY. 26. 1886. **P190007447 £50**



198

SG 190 1884 2 1/2d Lilac. Very fine used example lettered FP neatly cancelled by a London cds for JU. 3. 1885. **P190007439 £25**



199

SG 191var 1883 3d Colour trial. Very fine unused o.g. imperforate example lettered TB printed on Crown watermarked paper in deep olive. Very scarce, no more than two or three examples of each colour exist in private hands **G1671625 £1500**



200

SG 191 1883 3d Lilac. Very fine used example lettered OD neatly cancelled by a crisp Ayr cds for DE. 23. 1884. Scarce so fine. **P190002917 £100**



201

SG 192 1883 4d Dull green. Superb used example lettered PB, neatly cancelled by a crisp Maidenhead cds for MY. 4. 1885. **P190003580 £225**



202

SG 193 1883 5d Dull green. Very fine well centred unmounted o.g. example lettered CH. Lovely fresh colour and gum. **P190003582 £750**



203

SG 194 1884 6d Dull green. Very fine and fresh unmounted o.g. example lettered CK. **P190005019 £750**



204

SG 194 1883 6d Dull green. Very fine used example lettered IB, neatly cancelled by an Exeter cds for DE. 16. 1886. **P190003607 £240**



205

SG 197/214 1887-1900 1/2d-1s "Jubilee". Very fine and fresh unmounted o.g. set of fourteen. P190001752 £950



206

1886 Small head "288" die proof. Very fine example printed by DLR in black on white glazed card (92 x 61mm) with uncleared surround and without endorsements. The "288" die with a white ground to the rear of the Queen's head was produced for the forthcoming Jubilee issue. Very scarce. G1674355 £950



210

SG 200var 1885 2d "Jubilee" Essay. Very fine hand painted example in blue-green & scarlet with details of the design highlighted in Chinese white, executed on a piece of white card (79 x 113mm) Endorsed "Violet / Green duty" the "Violet" & "Green" has been pencilled through and replaced with "Purple" & "Red" respectively, with "Ornaments" in manuscript pointing to the Royal Coat of Arms and "4 Annas" at foot, from a group of the rejected designs which were later considered for a proposed India issue in 1891. Unique. G1454872 £5500



207

SG 198var 1887 1 1/2d Dull purple & green "Jubilee". Very fine and fresh unused o.g. example overprinted "CANCELLED" type I4. Scarce. Spec. K29t. P190007183 £1250



208

SG 198 1887 1 1/2d Dull purple & pale green "Jubilee". Very fine unmounted o.g. example. P190005042 £25



209

SG 199 1887 2d Green & scarlet. Very fine and fresh unmounted o.g. example of this scarce "Jubilee" shade. P190004842 £550



211

SG 200 1887 2d Grey green & carmine "Jubilee". Very fine unmounted o.g. example. P190005056 £50



212

SG 200var 1887 2d Deep grey-green & carmine "Jubilee". Very fine unmounted o.g. example. Spec. K30(4). P190007719 £120



213

SG 201 1887 2½d Purple/blue "Jubilee". Very fine unmounted o.g. example. P190005059 £45



214

SG 201var 1887 2½d Deep purple/blue "Jubilee". Very fine unmounted o.g. example. Lovely deep colour. Spec. K31(3). P190007724 £85



215

SG 202 1887 3d Purple/yellow "Jubilee". Very fine unmounted o.g. example. P190005067 £45



216

SG 203 1887 3d Deep purple/yellow "Jubilee". Very fine unmounted o.g. example. Spec. K32(2). P190007727 £60



217

SG 204 1890 3d Purple/orange. Very fine unmounted o.g. example of this difficult "Jubilee" shade. P06704903 £1300



218

SG 204 1890 3d Purple/orange "Jubilee". Very fine unused o.g. example of this difficult shade. Spec. K32(3). P190007728 £800



219

SG 205wi 1887 4d "Jubilee" (Wmk. Inverted). Very fine and fresh unused o.g. example of this difficult watermark variety. P14505096 £1200



220

SG 205 1887 4d Green & purple brown "Jubilee". Very fine unmounted o.g. example. P190005068 £60



221

SG 205a 1887 4d Green & deep brown "Jubilee". Very fine unmounted o.g. example. Spec. K33(2). P190007736 £60



222

SG 206 1892 4½d Green & carmine. Very fine used example neatly cancelled by a 1895 red Registered oval datestamp. unusual. P190005188 £60



223

SG 207 1887 5d Dull purple & blue (Die 1). Very fine and fresh unused o.g. example of this difficult issue. Lovely intense colour. P190007762 £800



224

SG207 1887 5d Dull purple & blue (Die 1). Very fine and fresh unmounted o.g. top marginal example. numeral. P190001337 £1100



225

SG 207s 1887 5d Dull purple & blue "Jubilee" (Die I). Very fine unused o.g. example overprinted "SPECIMEN" type 12. Very scarce with this specimen type. Spec. K35s.
P190007705 £125



226

SG 207a 1888 5d Dull purple & blue "Jubilee" (Die II). Very fine unmounted o.g. example.
P190005069 £60



227

SG 207a 1888 5d Dull purple & blue (Die II). Superb used well centred example neatly cancelled by a crisp Middlesbrough cds for JA. 3. 1895. P190003613 £35



228

SG 208 1887 6d Purple/rose-red "Jubilee". Very fine unmounted o.g. example. P190005071 £60



229

SG 208var 1887 6d Slate-purple/rose-red. Very fine unmounted o.g. example. Spec. K37(3).
P190007775 £65



230

SG 209 1887 9d Dull purple & blue "Jubilee". Very fine unmounted o.g. example.
P190005073 £110



231

SG 209 1887 9d Dull purple & blue. Superb used well example neatly cancelled by a crisp Brackley cds for SP. 13. 1893. Lovely colour.
P190003616 £55



232

SG 209var 1887 9d Dull purple & bright blue. Very fine and fresh unmounted o.g. example. Spec. K38(2). P190007781 £220



233

SG 210 1890 10d Dull purple & carmine "Jubilee". Very fine unmounted o.g. bottom right hand corner marginal block of four from marginal setting 2A, horizontal lined blocks and marginal rules with head plate rules cut away at corners. Spec. K33(1).
P190004686 £395



234

SG 210 1890 10d Dull purple & carmine "Jubilee". Very fine unmounted o.g. example.
P190004688 £90



235

SG 210 1890 10d Dull purple & carmine. Superb used example beautifully cancelled by a crisp Colchester cds for JU. 25. 1896.
P190003630 £50



236

SG 211 1890 1s Dull green "Jubilee". Very fine unmounted o.g. example. P190005076 £375



237

SG 211var 1887 1s Grey-green. Very fine unused o.g. bottom left hand corner marginal block of four of this more difficult 1s shade, lightly mounted on the upper two stamps only. Spec. K40(2).

P190006452 £1500



238

SG 211var 1887 1s Grey-green. Very fine unmounted o.g. example of this more difficult 1s shade. Spec. K40(2). P190006449 £400



238

SG 212 1890 1s Green. Very fine lightly mounted unused o.g. example lettered ND, lightly toned gum nevertheless very presentable. GI010447X £2250



240

SG 212 1891 1s Green. Fine used example lettered GC, neatly cancelled by a crisp West Strand B. O. cds for FE. 22. 1898, flanked by two dumb cancels of horizontal parallel lines. A most unusual and aesthetically attractive example. Cat. £800. P190005050 £425



241

SG 212a 1890 1s Green Pl. 2. Very fine used example lettered TA, showing "broken frame" variety at lower left. Neatly cancelled by Guernsey cds for JU. 8. 1900. A very attractive example of this scarce variety. Spec. K17a P12306604 £2000



242

SG 213wi 1900 1/2d Blue-green (Wmk. Inverted). Very fine unmounted o.g. example of this difficult watermark variety. P190004837 £125



243

SG 214 1900 1s Green & carmine "Jubilee" shades. Very fine unmounted o.g. set of three in green & carmine pink, green & carmine and green & deep "Intense" carmine. P190007794 £375



244

SG 214 1900 1s Green & carmine "Jubilee". Very fine unmounted o.g. example. P190005077 £100



245

SG 214wi 1900 1s Green & carmine (Wmk. Inverted). Very fine unmounted o.g. example of this rare watermark variety. P190004839 £2600



246

SG 214 1900 1s Green & Carmine "Jubilee". Very fine used example neatly cancelled by a crisp Alnwick cds for OC. 25. 1901. Most attractive. P190003634 £140



247

SG O2 1882 1/2d Pale green (I. R. Official). Very fine used example neatly cancelled by a crisp Haddington cds for JY. 11. 1883 P190003639 £55



248

SG O3a 1882 1d Lilac (I. R. Official). Very fine unmounted o.g. overprinted in blue-black. Scarce. 1982 BPA Certificate of a block of six from which this single was taken. P190005990 £400



249

SG O4s 1882 6d Grey (I. R. Official). Very fine unused o.g. block of six lettered BI-CK, overprinted "SPECIMEN" type 9. A couple light wrinkles nevertheless a scarce multiple so fine. Ex. Silkin & Gawaine Baillie. P190007208 £1750



250

SG O5 1882 1/2d Slate-blue (I. R. Official). Very fine unused o.g. example. P190004858 £85



251

SG O6 1885 2 1/2d Lilac (I. R. Official). Very fine unmounted o.g. example BB. Lovely colour and gum, very scarce as such. 2005 BPA Certificate of a Block of four from which this single was taken. P190005980 £725



252

SG O10 1890 10s Ultramarine (I. R. Official). Superb used example of this scarce departmental issue, neatly cancelled by a crisp Accounts Branch/Glasgow datestamp for OC. I. 1894. Very scarce so fine. 2003 Karl Louis Cert. P11200100 £2250



253

SG O14 1892 2 1/2d Purple/blue (I. R. Official). Very fine unused o.g. example. P190004856 £175



254

SG O14 1892 2 1/2d Purple/blue (I. R. Official). Very fine used block of four neatly cancelled by Registered oval datestamps. Scarce multiple so fine. P190003678 £110



255

SG O16 1892 £1 Green (I. R. Official). Very fine used example lettered OD, neatly cancelled by a crisp Accounts Branch/Glasgow oval datestamp for OC. 15. 1892, leaving the Queen's portrait clear. Most attractive. P190007210 £2500



256

SG O18 1901 6d Purple/Rose-red (I. R. Official). Very fine unused o.g. example of this difficult departmental issue. P190004857 £575



257

SG O62 1886 6d Dull green (Govt. Parcels). Very fine and fresh unused o.g. example of this difficult departmental issue lettered AQ. 2012 BPA Cert. P190007218 £3500



258

SG O63 1883 9d Dull green (Govt. Parcels). Very fine unused o.g. example of this difficult departmental issue lettered HD. Lovely colour and very scarce as such. 1981 RPS Cert. Ex Sir Gawaine Baillie. P190005974 £2750



259

SG O63 1883 9d Dull green (Govt. Parcels). Superb used example neatly cancelled by an Aberayron cds for MY. 8. 1885. Lovely fresh colour and very scarce so fine. P190002727 £1200



260

SG O64a 1883 1s Orange-brown Pl. 13 (Govt. Parcels). Very fine and fresh unused o.g. example lettered LC with variety "No dot under T". Very rarely seen so fine. 1995 BPA Cert. Ex. Gibraltar & Gross. P15609798 £2750



261

SG 216218267 1902-11 1/2d Controls. Very fine unused o.g. group of controls in Blue-green (A,B,C4 & D4), Yellow green (DLR D4,D5,E5,E6,F6,F7,G7,G8,H8,H9,I9,I10,J10 & Harrison P14 A11). An attractive and much above average group. P190006741 £65



262

SG 218aw 1904 1/2d yellowish-green (Wmk. Inverted). Very fine unused o.g. example in vertical pair with St. Andrew's Cross label. Ex Booklets. P190006738 £175



263

SG 218 1904 1/2d Yellowish-green. Very fine unused o.g. example D4 control pair with continuous rule, perforated type HI. Scarce. P190006740 £75



264

SG 219a 1904 1d Scarlet (Wmk. Upright). Very fine unmounted o.g. booklet pane of six printed by DLR with excellent perforations (Perf type P). Slight rust stain affecting a couple perforations on lower left hand stamp nevertheless scarce. Cat £325. Spec. MB5. P190005193 £180



265

SG 219aw 1904 1d Scarlet (Wmk. Inverted). Superb unmounted o.g. booklet pane of six printed by DLR. Exceptionally fine perforations (Perf type E). Scarce. Spec. MB5a. P190005418 £325



266

SG 224var 1905 1 1/2d Deep slate purple & bluish green (C). Very fine unmounted o.g. example printed by DLR. Spec. M9(3). P189017011 £95



267

SG 235 1905 4d Green & grey-brown (O). Very fine used example neatly tied to a Seaton Parcel Post label by a Seaton/Devon cds for DE. 2. 1905, with a second cds at right. P190006743 £45



268

SG 242 1902 5d Dull purple & ultramarine (O).
Very fine unused o.g. example printed by DLR.
Spec. M28(1). P189017461 £65



269

SG 242aWi 1906 5d Dull purple & ultramarine
(Chalk surfaced paper, Wmk. Inverted). Very fine
unmounted o.g. example of this rare watermark
variety, the first we have handled in over fifteen
years. Spec. M29(1)a. 1990 RPS Cert.
P190007708 £7500



270

SG 243 1906 5d Slate purple and ultramarine
(C). Very fine unused o.g. example printed by
DLR. Spec. M29(2). Ex. "Minoru". P15611915
£55



271

SG 245a 1907 6d Pale dull purple (C). Very fine used example neatly tied to a
Market Drayton Parcel Post label by a Market Drayton parcel cancel with a
cbs at right for AP.29. 1907. P190006744 £40



272

SG 250 1902 9d Dull purple and
ultramarine. Very fine unused o.g.
example printed by DLR. Spec.
M39(1). P190007274 £140



273

SG 251a var 1905 9d Slate
purple and pale ultramarine (C).
Very fine unmounted o.g.
example printed by DLR. Spec.
M40(2). P189017721 £275



274

SG 256 1910 10d Dull purple and scarlet
(C). Very fine unused o.g. example
printed by DLR. Spec. M43(5).
P190007279 £140



275

SG 257var 1901 1s Composite "Paste Up" essay of the Victorian "Jubilee" series. A spectacular
Series "B" essay with a lithographed quarter face portrait of King Edward VII facing left, mounted
on a stout white card tablet. A magnificent essay and exhibition piece, believed to be one of only
two or three examples in private hands. Ex. Stothert. G1560663 £6500



276

SG 259 1910 1s Dull green & scarlet (C).
Very fine unused o.g. example printed by
DLR. Spec M46(3). P190007302 £100



277

SG 260 1902 2s6d Lilac (O). Very fine unused o.g. example printed by DLR. Spec. M48(1). P190007303 £280



278

SG 261wi 1902 2s6d Pale dull purple (Wmk. Inverted, Chalk surfaced paper). Very fine unused o.g. left hand marginal example of this rare watermark variety printed by DLR. Spec. M49(1)b. 1975 RPS Cert. P11208186X £6500



279

SG 262var 1905 2s6d Slate purple (C). Superb unused o.g. example printed by DLR. Lovely colour and gum, scarce so fine. Spec. M49(3). P190005034 £350



280

SG 264 1902 5s Deep bright carmine. Very fine unused o.g. example printed by DLR. Spec. M51(2). P190002722 £450



281

SG 266 1902 £1 Dull-blue green. Very fine well centred unmounted o.g. example printed by DLR. G1671760 £3000



282

SG 271 1911 1/2d Bright green (Fine Impression, Perf. 14). Very fine and fresh unused o.g. right hand marginal example printed by Harrison & Sons. Spec. M3(6). P189014830 £275



283

SG 275 1911 1d Aniline pink (F). Very fine unmounted o.g. bottom marginal example printed by Harrison & Sons. Wonderful bright, salmon pink colour. Spec. M6(8). P190007185 £1250



284

SG 275 1911 1d Aniline pink (F). Superb used example printed by Harrison and Sons, tied to a small piece by a part cds for AU. 10. 1911. Incredible intense, bright colour, probably the most extreme variant of this distinctive shade. Spec. M6(8). P190005035 £400



285

SG 276 1911 2 1/2d Bright blue (Perf. 14). Very fine unused o.g. example printed by Harrison & Sons. Spec. M17(2). P189017097 £65



286

SG 279 1911 1/2d Dull green (Perf. 15x14). Very fine unused o.g. bottom left hand corner marginal control "A11" block of four printed by Harrison & Sons, perforation type V3. Spec M4(1). P189016916 £175



287

SG 284 1911 2 1/2d Dull blue (Perf. 15x14). Very fine unmounted o.g. example printed by Harrison & Sons. Spec. M18(3). P189017106 £50



288

SG 286 1911 4d Bright orange (Perf. 15x14).
Very fine unmounted o.g. example printed by
Harrison & Sons. Spec. M27(1). P189017446
£60



289

SG 287 1911 1 1/2d Reddish purple & bright
green. Very fine unmounted o.g. left hand
marginal example printed at Somerset House.
Spec. M10(1). P189016983 £90



290

SG 288var 1912 1 1/2d Deep purple & deep
green. Very fine unused o.g. example of this very
distinctive and scarce Somerset House shade.
Spec. M10(6). P190007110 £225



291

SG 290 1911 2d Deep dull green & red. Very
fine unmounted o.g. example printed at
Somerset House. Spec. M13(1). P189017052
£60



292

SG 297var 1911 6d Dull lilac (F). Very fine
unused o.g. example of this difficult shade
printed at Somerset House. Spec. M33(5).
P190007103 £200



293

SG 299 1911 6d Very deep reddish purple (F).
Very fine unused o.g. example printed at
Somerset House. Spec. M33(3). P190007108
£55



294

SG 301 1913 6d Dull purple (Dickinson coated
paper). Very fine unmounted o.g. example
printed at Somerset House. Spec. M34(1).
P189017691 £425



295

SG 301 1913 6d Dull purple (Dickinson coated
paper). Very fine unused o.g. example printed at
Somerset House. Spec. M34(1). P189017689
£250



296

SG 306 1911 9d Reddish purple & light blue.
Very fine unused o.g. example printed at
Somerset House. Spec. M41(1). P190007099
£75



297

SG 307 1911 9d Dull reddish purple & blue. Very
fine unused o.g. example printed at Somerset
House. Spec. M41(3). P190007098 £60



298

SG 308 1912 9d Slate purple & cobalt blue (F).
Very fine unused o.g. example printed at
Somerset House. Spec. M41(4). P190007096
£160



299

SG 311var 1911 10d Deep dull purple &
carmine. Very fine unused o.g. example printed
at Somerset House. Spec. M44(7). P190007093
£85



300

SG 312 1911 1s Dark green & scarlet. Very fine unused o.g. example printed at Somerset house. Spec. M47(1). P190007090 £120



301

SG 314 1912 1s Green & carmine. Very fine unmounted o.g. example printed at Somerset house. Spec. M47(5). P189017880 £140



302

SG 318var 1911 5s Carmine red. Very fine and fresh unmounted o.g. example of this difficult Somerset House shade. Spec. M52(1). P178011696 £875



303

SG 265 1902 10s Ultramarine. Superb unmounted o.g. top marginal example printed by DLR. Wonderful colour, very scarce so fine. Spec. M53(1). P190007186 £2000



304

SG 265 1902 10s Ultramarine. Very fine unused o.g. example printed by DLR, one short perforation at top right nevertheless a presentable example. Spec M53(1). Cat £1000. P190007307 £675



305

SG 318 1912 5s Carmine. Very fine unused o.g. example printed by Somerset House. Spec. M52(2). P190007305 £425



306

SG 319 1912 10s Bright blue. Superb unmounted o.g. example printed at Somerset House. Lovely fresh colour and gum. Spec. M54(1). P190007193 £2100



307

SG O25 1902 5s Bright carmine (I. R. Official). Very fine and fresh unused o.g. example of this rare departmental issue accompanied by a 1996 BPA Certificate. G0780139 £36000



308

SG O52 1903 6d Dull purple (Army Official, Ovpt type O6). Superb unused o.g. block of four very lightly hinged on top pair only. A great departmental rarity with only one other block of four recorded in private hands. 1947 & 1989 RPS Certificates. Ex Sir Gawaine Baillie. P190005976 £15000



309

SG O91/2 1902 1/2d Blue green & 1d Scarlet (R. H. Official). Very fine used example neatly cancelled by Windsor cds's for SP. 29. 1903 & DE. 6. 1903 respectively. P190005010 £325



310

SG O92 1902 1d Scarlet (R. H. Official). Very fine used example neatly cancelled by an East Cowes cds for OC. 6. 1902. P190005007 £175



311

SG O105 1903 2 1/2d Ultramarine (Admiralty Official, type O10). Very fine unused o.g. example of this difficult departmental issue. P190004863 £475



312

SG O106 1903 3d Dull purple/Orange-yellow (Admiralty Official, type O10). Very fine unused o.g. example of this difficult departmental issue. P190004864 £425



313

SG 324wi 1911 1/2d Yellow green (Die 1B, Wmk. Crown Inverted). Very fine unmounted o.g. example. Spec. N2(3)a. P190006952 £35



314

SG 324a 1911 1/2d Yellow-green (Die 1b, Wmk. Crown upright). Very fine and fresh unmounted o.g. booklet pane of six with exceptional perforations (Perf type E). Spec. NBI. P190005420 £350



315

SG 325var 1911 1/2d Deep green (Die 1B, Wmk. Crown). Very fine unused o.g. A11(W) control block of six (Perf type 2). Difficult shade. Spec. N2(6). P190000315 £150



316

SG 332a 1912 1d Scarlet (Die 1b, Wmk. Crown upright). Very fine and fresh unmounted o.g. booklet pane of six (Perf type E) Excellent perforations. Spec. NB4. P190005447 £550



317

SG 342var 1912 1d Scarlet (Die 2, Wmk. Crown). Very fine unused o.g. B11 control strip of three (Perf type 2A) showing "Coloured blob on O of ONE" variety from Pl. 5b Position R. 20/10. Right hand stamp bearing a small thin, not affecting variety or control stamps. Spec N11(1)e. P190000526 £250



318

SG 346wj 1912 1/2d Green (Die 2, Wmk. Royal "Multiple" Cypher, Reversed). Very fine unmounted o.g. example. Spec. N6(1)b. P190007018 £22



319

SG 347wi 1912 1/2d Yellow green (Die 2, Wmk. Royal "Multiple" Cypher, Inverted). Very fine unmounted o.g. example. Spec. N6(4)a. P190007030 £20



320

SG 350wj 1912 1d Scarlet (Die 2, Wmk. Multiple Cypher Reversed). Very fine unmounted o.g. Spec N13(1)b. P190007037 £55



321

1912 "Coinage head" die proof (Stage 1g). Very fine cut to stamp size uncleared example of the final accepted stage printed in green on gummed "Crown" watermarked paper. Rare.

G1565100 £2000



322

SG 357var 1912 1d Pink (Wmk. Royal Cypher). Very fine unused o.g. example of this scarce distinctive shade. Spec. N16(10).

PI90001178 £300



323

SG 357wi var 1912 1d Brick red (Wmk. Royal Cypher; Inverted). Very fine unused o.g. horizontal pair showing broken Dandy Roll "Missing Crown" watermark variety on left hand example.

Spec. N16(5)b/za. PI90001422 £75



324

SG 362var 1912 1½d Red-brown (Wmk. Royal Cypher). Very fine unused o.g. bottom left hand corner marginal N19 control strip of three, Perf type 2A(P) showing broken Dandy Roll "Long tail to G" variety. Spec. N18(1)zk. PI90003929 £60



325

SG 362var 1912 1½d Red-brown (Wmk. Royal Cypher). Very fine unused o.g. right hand marginal vertical strip of five showing complete "POSTAGE" watermark. Spec.

N18(1)yb. PI90003926 £275



326

SG 364a 1912 1½d Chestnut. Very fine unmounted o.g. right hand marginal block of four with thick chestnut rule showing "PENCF" variety on top right hand stamp from PI 29, R. 15/12. Spec. N18(13)f. PI90001522 £175



327

SG 370wk 1921 2d Orange (Die II, Wmk Inverted & reversed). Very fine unmounted o.g. example of this difficult watermark variety.

Spec. N20(1)c. PI90003976 £200



328

SG 373 1920 2½d Indigo-blue. Very fine and fresh unused o.g. example of this rare shade accompanied by a 1973 RPS certificate. Spec.

N21(14). P07807614 £2950



329

SG 375wk 1912 3d Bright violet (Wmk. Royal Cypher Inverted & Reversed). Very fine unused o.g. horizontal pair showing broken Dandy Roll "Missing Crown" watermark variety on left hand example. Spec. N22(6)d/za. PI90004026 £95



330

SG 375wj 1912 3d Bright violet (Wmk. Royal Cypher Reversed). Very fine unused o.g. example. Scarce watermark variety. Spec. N22(6)c. P190004031 £500



331

SG 379var 1913 4d Grey green (Wmk. Royal Cypher doubled, one Inverted & Reversed). Very fine unused o.g. block of four showing Double watermark variety, upright and a second watermark inverted & reversed. An amazing watermark variety presently unlisted but to be recorded in the next Specialised Vol. 2 Catalogue as Spec. N23(1)da. P190004050 £5950



332

SG 379 1913 4d Grey-green (Wmk. Royal Cypher). Very fine unused o.g. bottom left hand corner marginal control J17 perf type 2(E) block of six showing "Break above O of Four" variety from Pl. I. Position R. 19/2. Spec. N23(1)e. P190004119 £110



333

SG 381wi 1913 5d Brown (Wmk. Royal Cypher, Inverted). Very fine unmounted o.g. example of this difficult watermark variety. Spec. N25(1)b. P190004135 £1800



334

SG 385a 1920 6d Reddish purple (Chalk-surfaced paper; Perf. 14). Very fine unused o.g. horizontal pair showing "Broken frame below X P of SIX PENCE" variety on left hand example from position R. 16/9. Very scarce. Spec. N26(3)ee. P190004156 £950



335

SG 388 1915 7d Bronze-green (Wmk. Royal Cypher). Very fine unmounted o.g. example. Spec. N27(3). P190004220 £120



336

SG 390 1914 8d Black/yellow. Very fine unmounted o.g. bottom corner marginal D14, Perf type 2(E.) control strip of three. P189010963 £185



337

SG 390wj 1913 8d Black/yellow (Wmk. Royal Cypher Reversed). Very fine unmounted o.g. top marginal example. Spec. N28(1)c. P190004247 £375



338

SG 393avar 1922 9d Deep olive-green (Wmk. Royal Cypher). Very fine unmounted o.g. top marginal example. Lovely deep colour. Spec. N30(3). P190004383 £300



339

SG 393b 1922 9d Pale olive-green. Very fine unmounted o.g. bottom marginal example.

P189001073 £250



340

SG 395var 1916 1s Fawn-brown (Wmk. Royal Cypher). Very fine unmounted o.g. example of this difficult shade. Spec

N32(6). P190004431 £250



341

SG 395var 1916 1s Fawn-brown (Wmk. Royal Cypher). Very fine unused o.g. bottom marginal 116 (Perf E) control example of this difficult shade. Spec N32(6). P190004440 £175



342

SG 396var 1920 1s Deep bronze-brown (Wmk. Royal Cypher). Superb unused o.g. example of this very difficult shade. Lovely deep vibrant colour. Spec N32(10). P190004436 £1000



343

SG 396var 1920 1s Yellow-brown (Wmk. Royal Cypher). Very fine unused o.g. example of this very difficult shade. showing broken Dandy Roll "Missing vR" watermark variety. Scarce shade and watermark combination. Spec N32(11)zf.

P190004438 £875



344

SG 399 1913 2s6d Deep sepia-brown. Very fine and fresh unused o.g. example printed by Waterlow. Lovely deep colour and fresh gum. Spec. N63(2). P190004568 £325



345

SG 400 1913 2s6d Sepia-brown. Very fine unmounted o.g. left hand marginal block of four printed by Waterlow, a few split perforations between margin and some light gum wrinkling as usually seen nevertheless a very scarce multiple so fine.

Lovely fresh colour and gum. Spec. N63(3). P190007195 £2250



346

SG 401 1913 5s Rose carmine. Very fine and fresh well centred bottom left hand corner marginal unused o.g. block of four (Three stamps unmounted o.g.) printed by Waterlow with added printed security line at base. Very scarce so fine. Spectacular colour. Spec. N66(1). P190007196 £4950



347

SG 401var 1913 5s Pale rose-carmine. Very fine unused o.g. example printed by Waterlow. Spec. N66(2). P190004573 £650



348

SG 401var 1913 5s Carmine-red. Superb used example neatly cancelled by a crisp Guernsey cds for FE. 21. 1914, leaving a clear profile. Spec. N66(3). P190005079 £450



349

SG 402 1913 10s Indigo-blue. Very fine unused o.g. example printed by Waterlow. Spec. N69(1). P190004574 £975



350

SG 402 1913 10s Indigo-blue. Superb used example neatly cancelled by a light cds. Very difficult to find so fine. Spec. N69(1). P190005080 £475



351

SG 403 1913 £1 Green. Very fine and fresh well centred unused o.g. bottom marginal example printed by Waterlow. Spec. N72(1). P190004577 £2750



352

SG 403var 1913 £1 Deep green. Very fine unmounted o.g. bottom marginal example printed by Waterlow. Centred a little to the right nevertheless a lovely example of this difficult shade. Spec. N72(2). P10114077 £4000



353

SG 403var 1913 £1 Deep green. Very fine used example of this difficult Waterlow shade cancelled by a Jersey cds for JU. 17. 1914. Spec. N72(2). P190007197 £1750



354

SG 405 1915 2s6d Deep yellow-brown. Very fine and fresh unused o.g. bottom left hand corner marginal block of four printed by DLR. Very lightly mounted on top right hand stamp only. Spec. N64(5). P190004474 £2250



355

SG 405 1915 2s6d Deep yellow brown. Very fine well centred unmounted o.g. example printed by DLR. Spec. N64(5). P190007204 £680



356

SG 405var 1915 2s6d Very deep brown. Very fine unused o.g. example of this difficult DLR shade. Spec. N64(11). 2010 RPS Cert. G1673953 £2250



357

SG 406wi 1915 2s6d Yellow brown (Wmk. Inverted). Very fine well centred unmounted o.g. left hand marginal example printed by DLR. Spec. N64(6)f. P190007205 £1800



358

SG 406wi 1915 2s6d Pale yellow-brown (Wmk. Inverted). Very fine and fresh unused o.g. bottom right hand corner marginal block of four printed by DLR. Top pair showing watermark inverted and bottom pair showing inverted "POST" of "POSTAGE" watermark. A wonderful multiple scarce so fine. Spec. N64(7)f/ya. P190004481 £5500



359

SG 407var 1915 2s6d Dark brown (Worn plate). Very fine and fresh unused o.g. block of four printed by DLR. Spec. N64(4). P190004488 £1750



360

SG 407 1915 2s6d Grey-brown (Worn plate). Superb unused o.g. bottom right hand corner marginal example printed by DLR showing significant plate wear. Spec. N64(3). P190005081 £400



361

SG 407 1915 2s6d Deep yellow-brown (worn plate). Very fine and fresh unmounted o.g. right hand marginal example printed by DLR. Lovely deep colour and fresh gum. Spec. N64(5). P190005043 £850



362

SG 408var 1915 2s6d Pale sepia-brown (From unworn plate). Very fine and fresh well centred example of this very difficult early DLR shade. Spec. N64(1). 2011 RPS Cert. P190000326 £2500



363

SG 412 1915 10s Blue. Very fine unused o.g. example printed by DLR. Lovely fresh colour, gum and centring. Spec. N70(1). P190007206 £3250



364

SG 412 1915 10s Blue. Very fine used well centred example printed by DLR, neatly cancelled by a crisp Victoria St. No. 32 B. O. cds for MR. 16. ?? (Year slugs omitted) and a small part straight line handstamp at left. Lovely bright colour. Spec. N70(1). P190005048 £475



365

SG 413a var 1918 2s6d Dull sepia brown. Superb unmounted o.g. top left hand corner marginal block of four printed by Bradbury Wilkinson showing re-entry from Pl. -/1L, State 1, R. 1/1. A wonderful multiple with lovely fresh colour and gum. Spec. N65(2)a. P190004513 £1950



366

SG 414var 1918 2s6d Chocolate brown. Very fine unmounted o.g. example printed by Bradbury Wilkinson, overprinted "CANCELLED" type 33. Very scarce. Spec. N65(3)zd. P13406770X £1200



367

SG 416 1919 5s Pale rose carmine. Exceptionally fine and fresh unmounted o.g. top right hand corner marginal block of four printed by Bradbury Wilkinson from plate 1/2L (damp printing) on ribbed paper. Spec. N68(2)a. P190007207 £3000



368

SG 414/7 1918-19 2s6d-10s "Seahorse" High Values. Very fine and fresh unmounted o.g. set of three printed by Bradbury Wilkinson. Spec. N65(3), N68(1) & N71(2). P190005045 £1500



369

SG 417 1918 10s Dull grey-blue. Very fine used example printed by Bradbury Wilkinson, neatly cancelled by a Jersey Channel Islands cds for JA. 25. 1934. Spec. N71(2). P190003236 £150



370

SG 420d 1924 1½d Red brown advertising booklet pane. Superb unmounted o.g. part booklet pane missing the right hand vertical pair of adhesives, consisting of two advertisement labels with "India Rubber Sponge/R. G. Mc. Kinlay" advertisements in green and two stamps. A presentable example of this very rare and most sought after booklet pane. Spec. NB15(72). Cat £5000. P167000477 £750



371

SG 420dw 1924 1½d Booklet pane. Very fine used example with advert pane "Via Empiradio/Telephone Service", neatly cancelled by a Liverpool cds for JA. 3. 1969. Spec. NB15a(6). P190006697 £150



372

SG 420 1924 1½d Red-brown. Very fine used group of nine examples each with a different advertising label attached. Unusual. Ex Booklets. P190006699 £110



373

SG 420 1924 1½d Red-brown. Very fine group of 20 unused o.g. examples in ten blocks of four each with a different advertising label attached, including the scarce "Gaze's All Weather Tennis Courts" label. An attractive group. Ex Booklets. P190006700 £250



374

SG 422wi 1927 2½d Blue (Wmk. Block Cypher, Inverted). Very fine unused o.g. G27(l) control block of six lightly mounted on top three stamps only, printed by Waterlow from plate 5. Scarce. P190004018 £750



375

SG 422wi 1924 2½d Pale blue (Wmk. Block Cypher, Inverted). Very fine unmounted o.g. example. Spec. N37(2)b. P190004020 £140



376

SG 423wi 1924 3d Violet (Wmk. Inverted). Very fine unmounted o.g. bottom marginal example, the watermark variety clearly showing on the sheet margin. P189003802 £135



377

SG 424var 1924 4d Deep grey-green (Wmk. Block cypher). Very fine unused o.g. bottom left hand corner marginal control B24 perf type 2(c)/l strip of three. Scarce. Spec. N39(1). P190004125 £100



378

SG 425wi 1926 5d Brown (Wmk. Block Cypher, Inverted). Very fine unmounted o.g. F26 perf type 2(E) control strip of three printed by Waterlow from plate 2b. Scarce. Spec. N40(1)a. P190004140 £675



379

SG 426wi 1924 6d Reddish purple (Wmk. Inverted). Very fine unmounted o.g. example. Spec. N41(3)a. **PI89001081 £90**



380

SG 426aWi 1928 6d Pale Rosy Mauve (Wmk. Block Cypher, Inverted). Very fine unused o.g. J. 28 perf type 2(E) control block of six printed at Somerset House. Bottom three stamps unmounted o.g. couple light bends affecting corner example nevertheless an attractive and scarce watermark variety. Spec N42(2)a. **PI90004207 £550**



381

SG 427wi 1924 9d Olive-green (Wmk. Block Cypher, Inverted). Very fine unmounted o.g. example. Spec N43(1)a. **PI90004394 £175**



382

SG 429wi 1928 1s Bistre-brown (Wmk. Block Cypher Inverted). Very fine unused o.g. bottom marginal J28 (Perf E) control strip of three, control example with the slightest hint of a hinge the other two stamps superb unmounted o.g. Scarce multiple so fine. Spec N45(1)a. **PI90004456 £1650**



383

SG 432 1925 1d British Empire Exhibition. Superb handpainted essay depicting Britannia and a Ship of the line in green with detailing in pencil by Waterlow staff artist L. P. Fryer, painted on paper and mounted on thick white card (44 x 33mm). A magnificent and unique unissued essay. **PI90007464 £1500**



384

SG 432 1925 1d British Empire Exhibition. Superb handpainted essay in carmine depicting Britannia with a contemporary cruise ship the background with smoke billowing out of it's funnel with detailing in china white and pencil by Waterlow staff artist L. P. Fryer, painted on paper and mounted on thick white card (49 x 33mm). A magnificent and unique unissued essay. **PI90007472 £1650**



385

SG 432 1925 1d British Empire Exhibition. Superb handpainted essay in scarlet and yellow depicting a standing Britannia with a Ship of the line in the background with sunrays illuminating the vessel with detailing in china white and pencil by Waterlow staff artist L. P. Fryer, painted on paper and mounted on thick white card (47 x 34mm). A magnificent and unique unissued essay. **PI90007474 £1750**



386

SG 433 1925 1½d British Empire Exhibition. Superb handpainted essay depicting Britannia with a shield and trident with a Ship of the line in the background painted in light brown with detailing in china white and pencil by Waterlow staff artist L. P. Fryer, painted on paper and mounted on thick white card (39 x 34mm). A magnificent and unique unissued essay. **PI90007471 £1500**



387

SG 434/7 1929 ½d-2½d Postal Union Congress. Very fine unmounted o.g. set of five including both the blue and pale blue shades of the 2½d value. P19000687 £95



388

SG 436bw 1929 1½d Booklet pane of four plus two labels (Wmk. Inverted, Perf type P). Very fine unmounted o.g. pane with good perfs, showing advertisement "Holiday Trips £40/Atlantic transport Line". Spec. NComB4a(4). 2011 RPS Cert. P178009401 £500



389

SG 438 1929 £1 Postal Union Congress. Very fine and fresh unmounted o.g. example. P190004831 £1100



390

SG 438 1929 £1 Postal Union Congress. Very fine used example neatly cancelled by a lightly struck Guernsey cds for OC. 28. 1930. P190007711 £550



391

SG 439/42a 1934-35 ½d -2d "Photogravure" (Wmk. Sideways). Very fine used set of four. Ex Coils. P190006695 £100



392

SG 439/42a 1934-35 ½d -2d "Photogravure" (Wmk. Sideways). Very fine unused o.g. set of four. Ex Coils. P190006691 £150



393

SG 439c 1934 ½d Green "Photogravure" (Small format). Superb unmounted o.g. booklet pane of six showing cylinder E5 dot (Perf type I) Excellent perforations. Spec. NB21. P190005452 £150



SG 440 1934 1d Scarlet (Small format).
Very fine unused o.g. Y/36 Cylinder 50
(No dot) control block of six perf type
2 (I/E). P189005737 £60



395
SG 440var 1934 1d Scarlet essay. Very fine
unused o.g. imperforate horizontal pair of "large
head" essays printed on block cypher
watermarked paper. P189005726 £350

394

SG 441 1934 1½d Red-brown
"Photogravure" (Intermediate
format). Very fine used and
attractive group of three
stamps with brown
advertisement labels attached.
Two in irregular blocks of
three each with two labels
attached and tied to small
pieces and one as a pair with
label. Very scarce, Ex Booklet
type BB27. P190006703 £180



396



397

SG 441e 1935 1½d Red brown "Photogravure" (Small format).
Superb unmounted o.g. booklet pane of four plus two labels
with advert "For Safety of Capital/Commercial Fixed Trust"
(Perf type I). Spec. NB27(12). P190005460 £275



398

SG 441 1934 1½d Red-brown (Small format). Superb unmounted o.g.
bottom left hand corner marginal W/35 control block of six (Position
D) from cylinder 119 no dot, perf type 2(I/E) showing flaw in NE
corner from position R. 19/1. Scarce. P189005578 £100



SG 450/2 1934 2s6d-10s
"Seahorses" (Re-engraved). Superb
used set of three, each stamp
neatly cancelled by a crisp cds.
P190003246 £190

399



400

SG 453aw 1935 1/2d Silver Jubilee (Type II). Superb unmounted o.g.
booklet pane of four with excellent perforations. Spec. NComB5a.
P190005465 £80



401

SG 455a 1935 1 1/2d Silver Jubilee (Type III). Very fine unmounted o.g.
cylinder 66 booklet pane of four. A couple perforation separations at
top nevertheless a presentable cylinder pane with excellent
perforations. Spec. NComB7. P190005464 £95



402

SG 457var 1936 1/2d Green. Superb unmounted o.g. block of four showing
variety "Pearl beside crown" from position R. 20/2. Scarce. Spec. P1b.
P190007041 £35



403

SG 459a 1936 1 1/2d Red brown. Very fine unmounted o.g. booklet pane of
four plus two labels with "Cash's Satin Lingerie/Samples of Cash's
Ribbons" advertising labels with excellent perforations (Perf Type I). Spec.
PB5(3). P190005466 £150



404

SG 459a 1936 1 1/2d Red brown. Very fine unmounted o.g. cylinder G7 no
dot booklet pane of four plus two labels with "Everitt's Wardrobe
Fittings/ Everitt's Patents" advertising labels (Perf Type E) excellent
perforations. Spec. PB5(8). P190005472 £225



405

SG 459aw 1936 1 1/2d Red brown (Wmk. Inverted). Very fine unmounted
o.g. booklet pane of four plus two labels with "Kargo 2/6 per pack/Castell
Bros" advertising labels (Perf Type P) a couple perforation separations at
foot nevertheless a presentable example of this scarce pane. Cat £175.
Spec. PB5a(6). 2011 BPA Cert. P190005468 £110



406

1951 George VI Unattributed Essay. An attractive unattributed bromide photographic essay of a hand painted design featuring the four emblems of individual nation of the United Kingdom (Rose, Thistle, Daffodil and Shamrock) as seen on the George VI definitives, "Arms" High Value and "Victory" sets, by Waterlow staff artist L. P. Fryer (61 x 46mm). A magnificent and unique unissued essay. P190007556 £575



407

SG 462I 1937 1/2d Green. Very fine unmounted o.g. cylinder E38 no dot booklet pane of six with above average perforations. Perf type B3(I). Spec. QB1. P190006364 £125



408

SG 463I 1937 1d Scarlet. Superb unmounted o.g. cylinder F5 dot booklet pane of six with excellent perforations. Perf type B4A(I). Spec. QB10. P190006370 £75



409

SG 464I 1937 1 1/2d Red-brown. Superb unmounted o.g. cylinder G8 dot booklet pane of six with excellent perforations. Perf type B4B(E). Spec. QB21. P190006377 £75



410

SG 464b 1937 1 1/2d Booklet pane (Wmk. Upright, Perf type B4A(I)). Very fine unmounted o.g. example with advert "You Can Reach Your/Friends at Sea by Radio Telegram" showing cylinder "G18." dot. Spec. QB23(12). P189005671 £180



411

SG 470 1939 6d Purple. Superb unmounted o.g. bottom left hand corner marginal cylinder 41 no dot block of six, perf type 2(I/E). P190006411 £25



412

SG 471var 1939 7d Emerald-green. Very fine unmounted o.g. left hand marginal block of six showing "Mark in Crown" variety on top right hand stamp. Cyl. 9 no dot, R. 14/3. Spec. Q23d. P190006400 £150



413

SG 472 1939 8d Bright carmine. Superb unmounted o.g. bottom left hand corner marginal cylinder 9 no dot block of six, perf type 5(E/I). P190006412 £80



414

SG 474 1939 10d Turquoise-blue. Superb unmounted o.g. bottom left hand corner marginal cylinder 7 no dot block of six, perf type 6(I/P). P190006415 £200



415

SG 474a 1947 11d Plum. Superb unmounted o.g. bottom left hand corner marginal cylinder 1 no dot block of six, showing "Spot in G" variety in position R. 20/2. Perf type 6(I/P). Spec. Q27c. P190006416 £60



416

SG 475 1939 1s Bistre-brown. Superb unmounted o.g. bottom left hand corner marginal cylinder 19 dot block of six Perf type 5(E/I). P190006418 £150



417

SG 483 1940 2½d Centenary of First Adhesive Postage Stamp. Superb handpainted essay in black with detailing in china white and pencil by Waterlow staff artist L. P. Fryer, painted on paper and mounted on thick white card (30 x 38mm). A magnificent and unique unissued essay. P190007552 £1250



418

SG 483 1940 2½d Centenary of First Adhesive Postage Stamp. Superb handpainted essay in black with detailing in china white and pencil by Waterlow staff artist L. P. Fryer, painted on paper and mounted on thick white card (30 x 38mm). A magnificent and unique unissued essay. P190007553 £1250



419

SG 485I 1941 ½d Pale green. Very fine unmounted o.g. cylinder E65 dot booklet pane of six with above average perforations. Perf type B5(BP). Spec. QB4. P190006365 £95



420

SG 488I 1942 2d Pale orange. Very fine unmounted o.g. cylinder H20 dot booklet pane of six with excellent perforations. Perf type B6(l). Spec. QB30. P190006387 £85



421

SG 488I 1942 2d Pale orange. Very fine unmounted o.g. cylinder H22 no dot booklet pane of six with excellent perforations. Perf type B3(l). Spec. QB30. P190006388 £85



422

SG 489I 1942 2½d Light ultramarine. Very fine unmounted o.g. cylinder J39 dot booklet pane of six with excellent perforations. Perf type B6(l). Spec. QB33. P190006399 £60



423

SG 49I 1946 2½d Victory. Superb unmounted o.g. control S/46, cylinder 9 no dot bottom left hand corner marginal block of six, perf type 5 (E/l). Scarce. P190006425 £100



424

SG 495var 1949 75th Anniversary Universal Postal Union. Stunning bromide photographic essay of an unaccepted hand painted alternative design for the Universal Postal Union issue by Waterlow staff artist L. P. Fryer (69 x 47mm). A magnificent and unique unissued essay. P190007554 £575



425

SG 498a 1948 1s Olympic Games. Very fine unused o.g. example showing "White Blob on Lands End" variety from position R. 7/3. P190006427 £55



426

SG 420var 1924 1½d Red brown (Wmk. Block Cypher). Very fine unused o.g. right hand marginal horizontal strip of four showing variety "Imperf between right side and margin". Very scarce. Spec. N35(1)f. P190003943 £1800



427

SG 503l 1941 ½d Pale orange. Superb unmounted o.g. cylinder E85 no dot booklet pane of six with above excellent perforations. Perf type B3(l). Spec. QB7. P190006366 £65



428

SG 504l 1951 1d light ultramarine. Superb unmounted o.g. cylinder F8 no dot booklet pane of six with excellent perforations. Perf type B3(l). Spec. QB15. P190006373 £65



429

SG 505 1951 1½d Pale green. Superb unmounted o.g. bottom left hand corner marginal cylinder 199 dot block of six perf type 5(E/l). P190006423 £60



430

SG 5061 1951 2d Pale red-brown. Very fine unmounted o.g. cylinder H47 dot booklet pane of six with good perforations. Perf type B6(1e). Spec. QB31. P190006398 £75



431

SG 513var 1951 Festival of Britain "Great Exhibition". Stunning bromide photographic essay of an unaccepted hand painted alternative design for the Festival of Britain "Great Exhibition" issue by Waterlow staff artist L. P. Fryer (77 x 49mm). A magnificent and unique unissued essay. P190007555 £575



432

SG 516a 1954 1d Ultramarine (Wmk. Tudor Crown). Very fine unmounted o.g. cylinder F6 no dot booklet pane of three plus three printed labels "PLEASE POST EARLY IN THE DAY" perf type I. Spec. SB24. P190005991 £95



433

SG 517n 1953 1 1/2d Green (Wmk. Tudor Crown). Superb unmounted o.g. cylinder I2 dot booklet pane of two with good perfs. Perforation type (E). Spec. SB61. P190005999 £85



434

SG 518l 1954 2d Red-brown (Wmk. Tudor Crown). Superb unmounted o.g. cylinder H1 dot booklet pane of six with good perfs. Perforation type (1e). Spec. SB76. P190006010 £110



435

SG 536/9 1955 2s6d-£1 "Castles" (Waterlow printing). Very fine unmounted o.g. set of four. P190004549 £250



436

SG 5411 1955 1d Ultramarine (Wmk. St Edward's Crown). Superb unmounted o.g. cylinder F3 dot booklet pane of six with good perfs. Perforation type (le). Spec. SB26. P190005994 £55



437

SG 543blb 1956 2d Light red-brown (Wmk. Upright). Very fine unmounted o.g. imperforate booklet pane of six, tiny corner bend at lower right otherwise superb in all respects and very rare as such. Spec. SB78b. Cat. £5000. P190006517 £4250



438

SG 543lwi 1955 2d Red-brown (Wmk. St Edwards Crown Inverted). Superb unmounted o.g. booklet pane of six with average perfs. Perforation type (le). Spec. SB77a. P190006011 £90



439

SG 543b var 1956 2d Light red-brown (Wmk. St Edwards Crown). Superb unmounted o.g. imperforate horizontal pair, discovered by clerks at a Kent Post Office. Scarce. P190006201 £375



440

SG 548aa 1955 6d Reddish-purple (Wmk. St Edwards Crown). Superb vertical block of eight showing variety Imperf three sides, lightly mounted at top of the block leaving the variety block of four unmounted o.g. Rare only 6 pairs recorded. Spec. S105a. P190006208 £5250



441

SG 5711c 1958 1d Ultramarine (Wmk. Upright). Very fine unmounted o.g. part perf. booklet pane of six, separated perfs between 1st and 2nd stamps and tear at right between upper and lower rows. Despite faults from attempted separation a very presentable example of this rare booklet pane variety. Spec. SB30c. Cat. £4500. P190006520 £1750



442

SG 572mb 1961 1½d Green (Wmk. Sideways crown to left). Very fine unmounted o.g. booklet pane of four with excellent perforations on cream paper. Perf type (AP). Spec. SB68. P190006003 £50



443

SG 573lwi 1961 2d Light red-brown (Wmk. Multiple Crowns Inverted). Superb unmounted o.g. booklet pane of six with excellent perforations, perf type (I). Scarce pane so fine. Spec. SB79a. P190006014 £900



444

SG 576al 1965 4d Deep ultramarine (Wmk. Multiple Crowns). Very fine unmounted o.g. cylinder N2 dot booklet pane of six with excellent perforations. Perf type (I). Spec. SB105. P190006017 £65



445

SG 612mb 1961 1½d Green (Wmk. Sideways crown to right, Phosphor issue). Very fine unmounted o.g. booklet pane of four with excellent perforations on cream paper. Perf type (I½v). Spec. SB74a. P190006009 £150

SG 616alc 1965 4d Deep ultramarine (Wmk. Upright, violet phosphor). Very fine unmounted o.g. imperforate booklet pane of six, two small tears between upper and lower rows at right. Despite faults from attempted separation a very presentable example of this rare booklet pane variety. Spec. SB111a. Cat. £4750. P190006523 £1475



446



447

SG 595var 1959 2s6d "Castles" (2nd DLR Printing). Very fine unmounted o.g. right hand marginal example showing a superb full offset on reverse. P190006526 £375



448

SG 517d 1952 1½d Green (Wmk. Tudor Crown). Superb unused o.g. Cylinder 6 dot block of six showing butterfly flaw in position R. 19/1. Lightly mounted at top and foot of block leaving the variety unmounted. A very difficult variety on this cylinder. Spec. S25e Cat. £800. P190006198 £475



449

SG 613aa 1962 2d Light red-brown (2 bands, blue phosphor applied photo). Very fine bottom right hand corner marginal horizontal pair showing variety "Imperf three sides". Unmounted o.g. but with some light gum adhesions. Extremely rare, only 6 pairs recorded. Cat. £4500. 2012 BPA Cert. P190006222 £3250



450

SG 576a var 1965 4d Deep ultramarine (Wmk. Multiple Crown inverted). Very fine unmounted o.g. left hand marginal block of four showing variety "Imperf three sides" on upper pair, complete with binding selvage. Some gum wrinkling nevertheless of fine appearance and very rare. Ex part perforated booklet pane SG576alcWi. Cat. £4500 as complete pane. P190006220 £1250



451

SG 544b1c 1956 2½d Carmine-red (Type II, Wmk. Upright). Very fine unmounted o.g. part perf. booklet pane of six, top right stamps with separated perfs and small tear just affecting the stamp below, nevertheless a very presentable example of this very rare booklet pane variety. Spec. SB81c. Cat. £4250 P190006519 £2250



452

SG 544var 1955 2½d Carmine (Type I, Wmk. St Edwards Crown Crown). Superb unmounted o.g. example showing variety Imperf between stamp and top margin. Rare only 12 examples recorded. Spec. S52a. P190006205 £1200



453

SG 544var 1955 2½d Carmine (Type I, Wmk. St Edwards Crown). Very fine example showing variety Imperf between stamp and top margin, lightly hinged in margin only. Rare only 12 examples recorded. Spec. S52a. Cat. £1200 P190006204 £850



454

SG 573var 1958 2d Light red-brown (Wmk. Crowns, Cream paper). Very fine top right hand corner marginal horizontal pair showing variety Imperf between stamp and top margin, lightly hinged above right hand stamp only with small gum wrinkle in margin. Scarce. Spec. S40a. Cat. £1700 P190006211 £850



455

SG 575var 1958 3d Deep lilac (Wmk. Multiple Crown inverted). Very fine unmounted o.g. left hand marginal horizontal strip of three showing variety "Imperf three sides" complete with binding selvage. Centre stamp with vertical crease nevertheless a very scarce multiple of fine appearance. Ex part perforated booklet pane SG5751cWi. Cat. £4000 as complete pane. P190006215 £1600



456

SG 637/8var 1963 3d-4½d National Nature Week (Ordinary). Superb unmounted o.g. top marginal set of two imperforate imprimaturs, each stamp with a "BPMA" handstamp on reverse. Scarce. P14513733 £2400



457

SG 646/50var 1964 Shakespeare Festival. Superb set of five perforated and gummed essays on unwatermarked paper mounted on Harrison presentation cards, the lower four values with the face value in black instead of white as issued. Each card endorsed "Different colour black No." on front and "1st essay" on reverse. The 6d value with additional notes "The actual colours are lighter than these specimens. The denomination should also be shown in white instead of black" initialled "KF". A spectacular unique set of essays. P190007243 £9500

Shown at 65%



458

SG 696af 1966 4d British Birds (ordinary). Very fine unmounted o.g. right hand marginal block of four with emerald omitted affecting the Gull, Blue tit and Robin. Offered with a normal block for comparison. G1455506 £600



459

SG 700var 1966 4d England's World Cup Football Victory. Superb unmounted o.g. top marginal imperforate imprimatur; "BPMA" handstamp on reverse. Scarce. P14514315 £1200



460

SG I105b 1979 10p Christmas. Superb unmounted o.g. imperforate horizontal pair. Scarce. P13408021X £1200



461

SG 2493a 2004 68p 150th Anniversary of the Crimean War. Very fine unmounted o.g. imperforate horizontal pair. Scarce, Pierron records only 12 mint pairs. G1673888 £2000



462

SG T10wi 1881 1s Orange-brown Pl. 11 (Telegraph, Wmk. Sideways-Inverted). Very fine used example lettered RD, neatly cancelled by a Vere Street Edin. for JY. 25. 1881. P190005052 £140



463

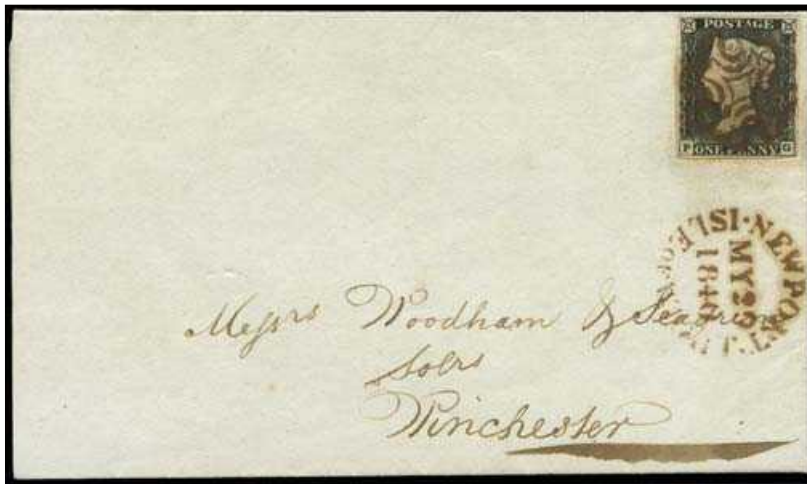
SG T15s 1881 5s Rose "Telegraph" Pl. 3. Very fine and fresh unused o.g. example lettered CG, overprinted "SPECIMEN" type 12. Light corner bend at top right nevertheless a presentable example of this difficult Telegraph issue and the first specimen example we have handled in nearly twenty years. Cat £1000. P190007654 £750



1837 Provincial Post. Very fine matched pair of single and double rate covers sent from Glen to London Derry, Ireland, rated at 5d and 10d as indicated in manuscript both with an identical "DERRY/ PENNY POST" handstamp at top right. Both bearing Glen handstamps on reverse, Letterkenny transit datestamps for MR. 1837, and Derry Arrival datestamps for the same day respectively. An attractive pair.

P190007222 £150

Shown at 80%



Shown at 80%

465

SG 3 1840 1d Grey black Pl. 1a. Very fine used entire to Winchester bearing a 1d grey-black with close to good margins lettered PG, beautifully cancelled by a crisp brown MC with a matching Newport/Isle of Wight cds below for MY.29. 1840. An extraordinarily rare and beautiful example of this distinctive coloured cancellation. P190007112 £7500



Shown at 80%

466

SG 2 1840 1d Black Pl. 10. Very fine used close to large four margin example lettered HB, neatly tied to a clean entire by a crisp black MC. Sent from Belfast to Ballymoney with a crisp Belfast cds on reverse for AP.5. 1841. Very attractive and appealing Irish usage of this difficult plate. P190006594 £1750



Shown at 80%

467

SG 7 1841 1d Red-brown Pl. 11. Very fine used four margin example lettered OK, neatly tied to a clean unfolded cover by a black MC. Sent from Rhynie to Aberdeen with a superb "RHYNIE" receiving office handstamp at upper left, and an Aberdeen arrival datestamp on reverse for SP. 19. 1841. Lovely quality. Spec. AS74. P190000390 £350



Shown at 70%

468

SG 40 1858 Naval Officers Mail. Very fine entire from an officer serving in the 2nd Opium War, routed via Marseille and prepaid with eleven 1d Rose-red Pl. 43 each neatly cancelled by London "40" numerals. (The rate at this period was 9d per ¼oz or 1s Per ½oz. 11d per ¼oz was the previous rate, so whether this was an under payment, overpayment or simple confusion as to the then current rate is a mystery.) Addressed to Exmouth with London, Exeter and Exmouth datestamps on reverse for AU. 1+2. 1858. Endorsed on reverse "None of us touched in the action" which almost certainly refers to the naval bombardment and taking of the Taku forts guarding the mouth of the Hai river a few weeks earlier. [P190002874](#) £875



Shown at 70%

469

SG 45 1860 GB Used Abroad. Very fine cover from Malta to Messina prepaid at the 4d per ½oz rate by a pair of 2d Blue Pl. 9, neatly tied by two strikes of the "A25" duplex for DE. 31. 1864. Boxed "Piroscafi/Postali/Francesi" handstamp at left and Messina arrival cds on reverse for JA. 1. 1865. A clean and attractive cover. [P190006752](#) £125



Shown at 70%

470

SG 73 1858 Overseas mail. Very fine single rate (11½d but overpaid as no ½d stamp in 1858) wrapper sent from Cardiff to St. Petersburg bearing a 1s pale green (SG73) neatly tied by Cardiff "162" sideways duplex for MR. 18. 1858, with a red Aachen transit cds for MR. 20. 1858 and a red "P" handstamp below adhesive. A red manuscript "7½" (pence) indicating the British credit to the Prussian Post Office and a blue manuscript "3" (Silver Groschen) indicating the amount due to the Russian post office from the Prussian office. Backstamped by a London transit cds for MR. 19. 1858. Attractive overseas usage [P14516314](#) £375



Shown at 70%

471

SG 147158 1881 Overseas mail. Very fine triple rate mourning entire from London to Singapore, prepaid at the 1s3d rate by two 6d grey Pl. 17 (Wmk. Spray) and a 3d rose Pl. 20 (Wmk. Crown) all tied by Paddington W. "P/22" duplexes for JA. 6. 1881. Endorsed "Overland Mail" and routed via Brindisi, Alexandria, Suez, Aden, Galle, Penang and Singapore. Indistinct, lightly struck Singapore receiving cds on reverse. Ex. A. J. Lowe (1990) when described as possibly the earliest known usage of the 3d value. P190001669 £750



Shown at 70%

472

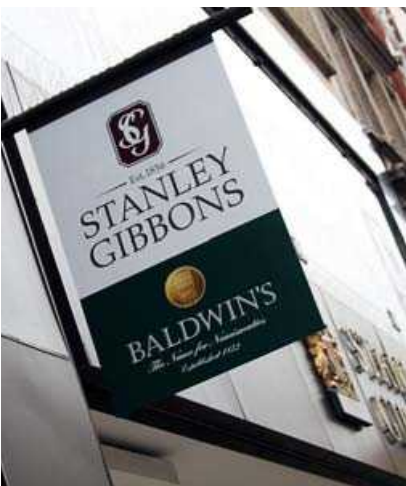
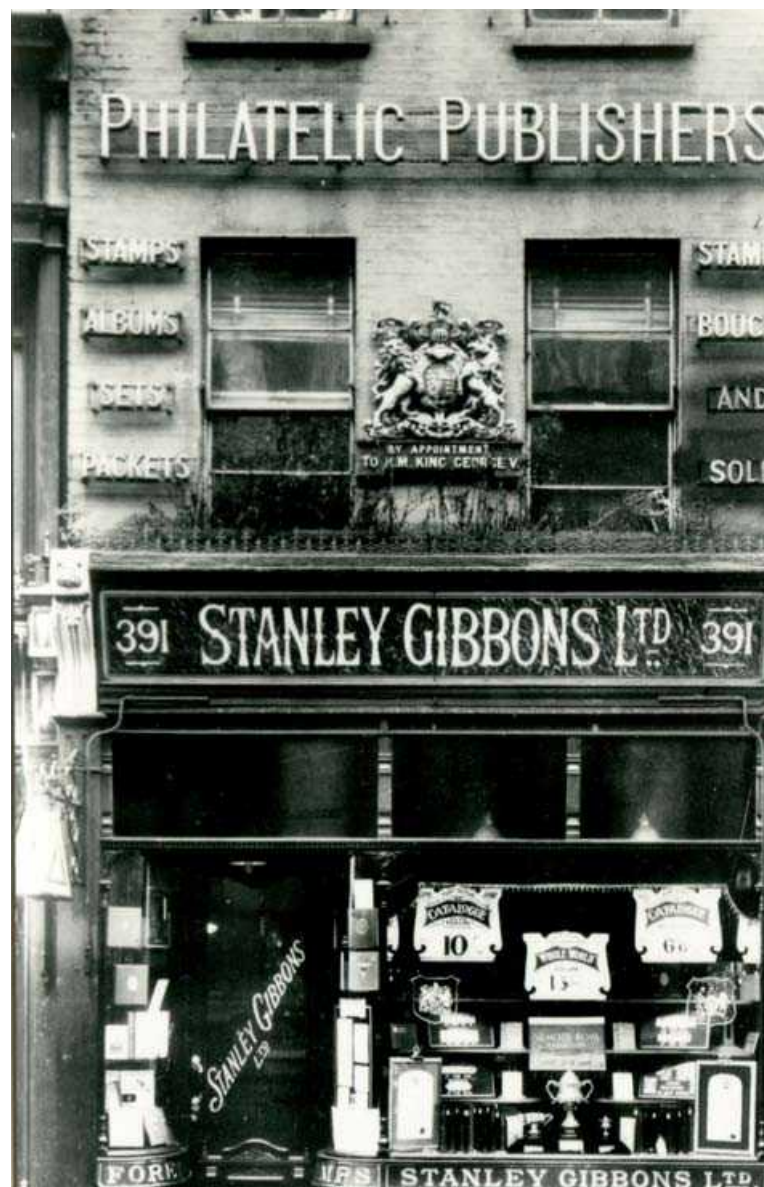
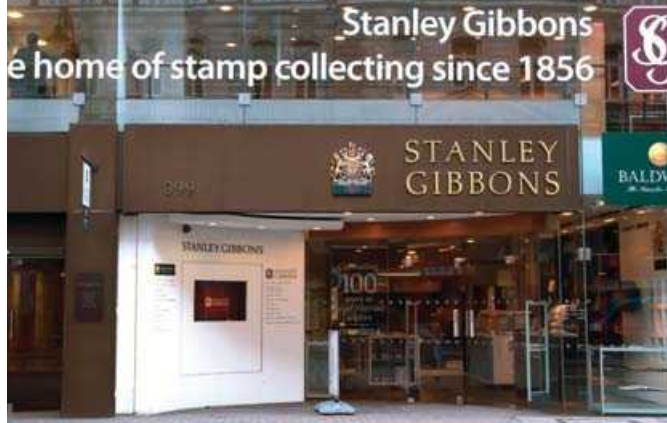
SG 226243 1904 Overseas/registered mail. Very fine registered cover to Batavia (Jakarta, Java) the 7d rate (5d postage + 2d registration) prepaid by a 2d grey-green & carmine and a 5d slate purple & ultramarine, both tied by Battersea cds's for JY. 28. 1904. Battersea and London registered datestamps on reverse for the 28th and a Batavia arrival cds for AU. 22. 1904. Scarce destination item. P189015702 £150

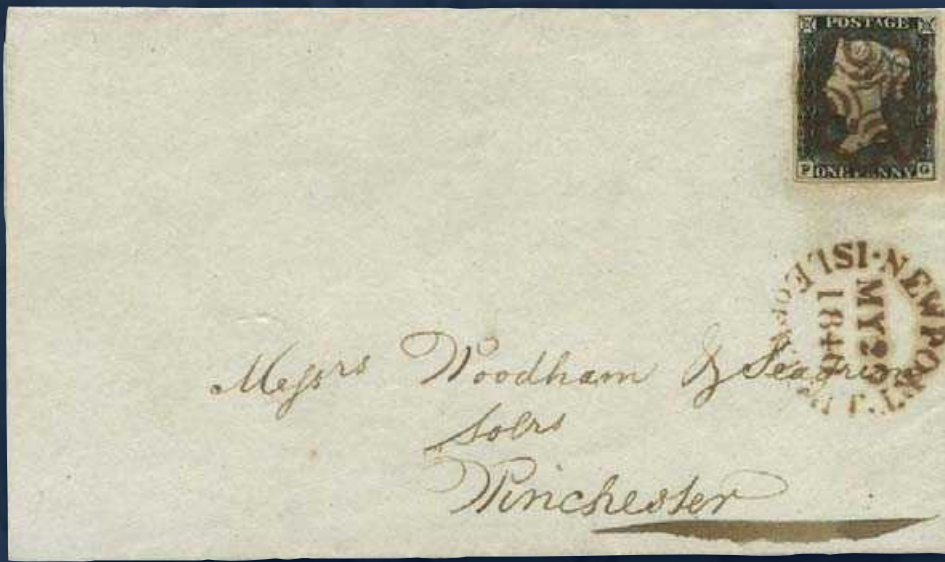


Shown at 70%

473

SG 637/8 1963 3d-4½d National nature week (Ordinary). Very fine used set of two on an illustrated first day cover cancelled by special Brownsea Island/ Poole datestamp for the first day of issue MY. 19. 1963. Scarce. P167004559 £195





399 Strand, WC2R 0LX, London

Please call 020 7557 4413 | Email gb@stanleygibbons.com

www.stanleygibbons.com