



BY APPOINTMENT TO
HER MAJESTY THE QUEEN
PHILATELISTS
STANLEY GIBBONS LTD
LONDON

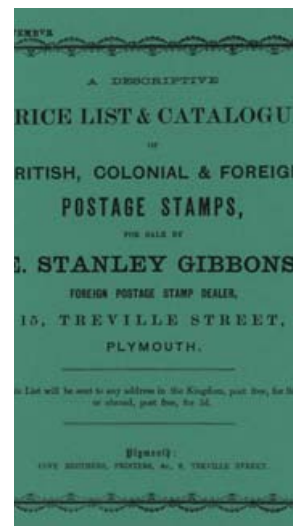
STANLEY GIBBONS

THE HOME OF STAMP COLLECTING



Great Britain Winter List
2019

Stanley Gibbons
of stamp collecting since 1856



INTRODUCTION

Dear Collector,

Welcome to our latest stamp offering for 2019. This winter edition covers our usual broad range of collecting areas, with a special feature of the Wyon Medal that, incredibly, has been lying in a vault since the late 1800s!

We also have a comprehensive selection of Railway Newspaper Labels (pages 53 - 59). Further examples are on our website in our full listing. Alternatively, please get in touch if you would like details posted.

Also taking place this month is an event not to miss: our annual Christmas drinks in conjunction with the Great Britain Philatelic Society. New customers don't have to be a member to attend, but please do RSVP to nquadros@stanleygibbons.com or call 020 7557 4413 to join us.

Still to come, our dedicated Postal History List, which will be out towards the end of November. Please contact us to request a copy (details on the next page).

As always, we encourage you to contact us about your items and collections. We are always delighted to offer advice.

Our contact details are on the next page or you can use the enclosed order form and send it to the printed address. As our stock is continually changing, please do check the Stanley Gibbons website or share your wants list with us to receive direct offers as soon as new items arrive.

From all of us here in the GB Department and throughout Stanley Gibbons, we would like to wish you best wishes for the Christmas period and the New Year.

Team GB

MEET THE GREAT BRITAIN TEAM



MICHAEL BARRELL
Great Britain Specialist

mbarrell@stanleygibbons.com | +44 207 557 4456



SCOTT BRADLEY
Great Britain Specialist

sbradley@stanleygibbons.com | +44 207 557 4426



VINCE CORDELL
Senior Philatelic Specialist

vcordell@stanleygibbons.com | +44 207 557 4414



VICTORIA LAJER
Managing Director, Philately

vlajer@stanleygibbons.com | +44 207 557 4464



STANLEY
GIBBONS

ESTABLISHED 1856

The Great Britain Specialist Department in conjunction
with the Great Britain Philatelic Society request
the pleasure of your company at the

CHRISTMAS PHILATELIC GATHERING

At 399 Strand, London, WC2R 0LX

WEDNESDAY 11TH DECEMBER
6pm – 8pm

Members of the Society will be exhibiting philatelic material.
A comprehensive offering of GB stock and special offers
on publications will be available.

Refreshments, mince pies and other Christmas treats will be served:

RSVP to Natasha Quadros on **020 7557 4413** / nquadros@stanleygibbons.com

WWW.STANLEYGIBBONS.COM





1837 Wyon City Medal.

Extremely fine example struck in silver with coronetted bust left, rev. frontal elevation of the Guildhall, 55mm (W & E 72.2; BHM 1775; E 1304). Produced to commemorate Queen Victoria's visit to the Corporation of London, the portrait of Victoria on reverse by William Wyon was the model for the portrait on all Great Britain stamps of the reign. Very scarce only 120 examples were struck in silver.

£3,000



1

1840 Whiting Embossed Essay. Superb top left hand corner marginal example printed in black on soft white wove paper (64 x 59mm) dated in manuscript at top left 22.FEB.1840. Unique and important dated piece. 2010 BPA Cert. G1674317 £2200



2

SG DP20(3)e 1840 1d Rainbow trial (State 3e). Very fine unused corner marginal example printed in dark olive green on thick laid heavily blueed paper dipped in prussiate of potash. 1995 RPS Certificate. Scarce. Spec. DP20(3)e. G1011450 £2800



3

SG 3 1840 1d Grey black Pl.1a. Very fine used close to large four margin example lettered OI showing moderate plate wear, neatly cancelled by a crisp red MC. Spec. AS2. P190012239 £350



4

SG 2 1840 1d Black Pl.1b. Very fine and fresh used large four margin example lettered AG, neatly cancelled by a crisp red MC. Spec. AS5. P190011029 £475



5

SG 2 1840 1d Black Pl.1b. Very fine used four margin example lettered IC, neatly cancelled by a red MC. Spec. AS5. P190007130 £375



6

SG 2 1840 1d Black Pl.2. Very fine used good to large four margin example lettered JK, neatly cancelled by a crisp red MC. Spec. AS15. P190012229 £375



7

SG 2 1840 1d Black Pl.2. Very fine used four margin example lettered KH, neatly cancelled by a red MC. Spec. AS23. P190012242 £350



8

SG 2 1840 1d Black Pl.3. Very fine used good to large four margin example lettered NE, neatly cancelled by a crisp red MC. Most attractive. Spec. AS20. P189009934 £475



9

SG 2 1840 1d Black Pl.3. Very fine used four margin example lettered QJ, neatly cancelled by a crisp red MC. Spec. AS20. P189009932 £400



10

SG 3 1840 1d Grey-black Pl.3. Very fine used four margin example lettered LJ, neatly cancelled by a red MC. Light vertical bend nevertheless a presentable example. Spec. AS21. Cat. £500. P190011014 £200



11

SG 1 1840 1d Intense black Pl.4. Very fine used good to large four margin example lettered MC, neatly tied to a small piece by a red MC. Spec. AS22. P190011028 £475



12

SG 2 1840 1d Black Pl.4. Very fine used four margin example lettered DA showing double letter "D" variety, neatly cancelled by a red MC. Spec. AS23b. P190011015 £375



13

SG 1 1840 1d Intense black Pl.5. Very fine used good to large four margin example lettered MC, neatly cancelled by a red MC. Lovely intense shade. Spec. AS24. P190012283 £425



14

SG 2 1840 1d Black Pl.6. Very fine used four margin example lettered CH, neatly cancelled by a red MC. Spec. AS25. P190011019 £375



15

SG 2 1840 1d Black Pl.6. Very fine used four margin example lettered RI, neatly cancelled by a crisp black MC. Spec. AS41. P190012244 £375



16

SG 2 1840 1d Black Pl.7. Very fine used four margin example lettered BH, neatly cancelled by a red MC. Spec. AS45. P190011022 £375



17

SG 2 1840 1d Black Pl.7. Very fine used close to huge four margin example lettered SJ, neatly cancelled by a lightly struck red MC. Spec. AS44. P190009381 £275



18

SG 2 1840 1d Black Pl.8. Very fine used good to large four margin horizontal pair lettered CD-CE, neatly cancelled by crisp black MC's. A scarce multiple. Spec. AS46. P189003593 £1500



19

SG 2 1840 1d Black Pl.8. Very fine used four margin example lettered AE, neatly cancelled by a red MC. Spec. AS46. P190012296 £400



20

SG 2 1840 1d Black Pl.9. Very fine used four margin example lettered CH, neatly cancelled by a crisp, upright black MC. Spec. AS56. P190011025 £450



21

SG 2 1840 1d Black Pl.10. Very fine used good to very large four margin example lettered LI, neatly cancelled by a black MC. Spec. AS66. Cat. £950. P189008982 £750



22

SG 5 1840 2d Blue Pl.1. Very fine and fresh used four margin example lettered KD, neatly cancelled by a bold red MC. Spec. DS5. P190012249 £975



23

SG 5 1840 2d Blue Pl.1. Very fine used good to large four margin example lettered FK, neatly cancelled by a red MC. Spec. DS5. P190012310 £875



24

SG 5 1840 2d Blue Pl.1. Very fine used close to large four margin example lettered IA, neatly cancelled by a red MC. Spec. DS5. P190012230 £575



25

SG 6 1840 2d Pale blue Pl.1. Very fine used good to large four margin example lettered BD, cancelled by an upright red MC. Spec. DS6. P190011040 £650



26

SG 4 1840 2d Deep full blue Pl.2. Very fine used four margin example lettered LK, neatly cancelled by a black MC. Spec. DS7. P190012302 £750



27

SG 7 1841 1d Red-brown Pl.5 (State 2). Very fine used good to large four margin example lettered TB, neatly tied to a small piece by a black MC well clear of check letters which show pronounced thinning characteristic of this state. Spec. AS38. 1990 RPS Cert. P190011044 £675



28

SG 7 1841 1d Red brown "Black" Pl.8. Superb unused o.g. example lettered OL, very lightly mounted and a wonderful example of this scarce stamp, the finest we have handled for many years. Spec. AS47. 2015 RPS Cert. P15611080 £9500



29

SG 8 1841 1d Red-brown Pl.16. Very fine used good to large four margin example lettered CA, neatly cancelled by a crisp Black MC. Spec. BS5. P190012517 £70



30

SG 8 1841 1d Red-brown Pl.21. Very fine used good to large four margin example lettered JA, cancelled by a black MC. Spec. BS10. P190012521 £50



31

SG 8 1841 1d Red-brown Pl.21. Very fine used good to large four margin example lettered DH, neatly cancelled by a black MC. Spec. BS10. P190012523 £60



32

SG 8 1841 1d Red brown Pl.23. Very fine used large four margin example lettered NJ, neatly cancelled by a black MC leaving a clear profile. Spec. BS12. P189002119 £60



33

SG 8m 1841 1d Red-brown Pl.24. Very fine used good to large four margin example lettered TE, neatly cancelled by a crisp black London No.7 MC. Spec. BS13ug. P189006472 £140



34

SG 8 1841 1d Red-brown Pl.26. Very fine used good to large four margin example lettered CJ, neatly cancelled by a black MC. Spec. BS15. P190012525 £60



35

SG 8 1841 1d Red-brown Pl.28. Very fine used good to large four margin example lettered JA showing "J" flaw, neatly tied to a small piece by a crisp black MC. Spec. BS17g. P190012526 £70



36

SG 8 1841 1d Red-brown Pl.32. Very fine used good to huge four margin example lettered MA, neatly cancelled by a black MC. Spec. BS21. P190012527 £70



37

SG 8var 1841 1d Red-brown Pl.32 & Pl.102. Two very fine used four margin 1d red-brown's Pl.32 lettered FF and Pl.102 lettered OE both neatly cancelled by Handsworth "PYP/No. 15" boxed cancellations in blue, FF cancelled by an additional black MC and OE cancelled by a Plymouth "620" numeral. Scarce. Spec. BS21wc & BS32wc. P178004002 £750



38

SG 8 1841 1d Red-brown Pl.35. Very fine used four margin example lettered IH, neatly tied to a small piece by a complete distinctive Scottish thin lined MC. An attractive example of this distinctive cancellation. Spec. BS24ty. P178010624 £75



39

SG 8 1841 1d Red-brown Pl.36. Very fine used four margin example lettered FE, neatly tied to a small piece by a black MC. Spec. BS25. P190012529 £60



40

SG 8p 1841 1d Red brown Pl.98. Superb used four margin example lettered GC, neatly cancelled by a crisp blue Castle Cary "949" numeral. Spec. BS31xb. P178012886 £250



41

SG 8 1841 1d Red-brown Pl.112. Superb unused large part o.g. block of four. Top pair very lightly mounted and lower pair unmounted. Extremely fresh block, seldom seen. Spec BS32. P15601924 £2750



42

SG 8var 1841 1d Red brown Pl.126. Superb unused top right hand corner marginal imperforate imprimatur lettered AL, showing part sheet inscription and plate number "126". Rare. Ex. Colonel Bates (1934) & "Verus". P14517118 £2750



43

SG 8 1841 1d Red-brown Pl.154 (Alphabet II). Very fine and fresh unmounted o.g. close to large four margin example lettered RD. Spec. B2(1). P190012356 £650



44

SG 8 1841 1d Red-brown Pl.175. (Alphabet II). Very fine used good to large four margin example lettered OC, neatly cancelled by a Coleraine "149" Irish numeral cancellation. A wonderful example of this difficult plate, scarce so fine. Spec. B2(1). P189005057 £650



45

SG 8 1841 1d Red-brown Pl.176. Superb unused o.g. four margin example lettered HC. Unused examples of this difficult plate are of the utmost rarity. Spec. B2(1). 2011 BPA Cert. P189005661 £5750



46

SG 8p 1841 1d Red brown. Superb used close to large four margin example lettered TA, neatly cancelled by a crisp, blue York "930" numeral. Spec. B1(1)xb. P167007220 £225



47

SG 14 1841 2d Blue Pl.3. Superb used four margin left hand marginal example lettered MA, showing full deckle edge selvage and inscription, neatly cancelled by a black MC. An exceptional example. G1673864 £1950



48

SG 14h 1841 2d Blue Pl.3. Very fine used four margin example lettered BB, neatly cancelled by a superb blue Weymouth "873" numeral. Very scarce so fine. 1989 BPA Cert. G1671726 £875



49

SG 16b 1850 1d Red brown Pl.96 (Archer trial perforation). Superb used well centred example of this rare trial perforation lettered BG, neatly tied to a small piece by a London City "20" numeral. Very rarely seen so fine. Spec. CE2. P178005716 £625



50

SG 19 1854 2d Deep blue Pl.4. Very fine used block of four lettered SA-TB, each stamp neatly cancelled by a London district "77" numeral. A very scarce block. Spec. FI(1). P190011071 £1250



51

SG 20 1854 2d Blue Pl.4 (Wmk. Small Crown, Perf. 16). Very fine used example lettered PD, neatly cancelled by a Huddersfield "387" numeral. P189011738 £100



52

SG 21 1855 1d Red brown Pl.1 (Wmk. SC Perf. 16). Very fine used example lettered GK, lightly cancelled by a crisp Liverpool "466" numeral. Spec. C4(1). P178003860 £65



53

SG 21 1855 1d Red brown Pl.4 (Wmk. Small Crown, Perf 16). Very fine used mis-perforated example lettered TJ, showing a significant shift so that the word "POSTAGE" is omitted. Neatly tied to a small piece by a Liverpool "466" type C3 spoon for MY.11.1855. Unusual. Spec. C4(1). P167005679 £75



54

SG 21 1855 1d Red-brown Pl.10 (Wmk. Small Crown, Perf 16). Very fine used example lettered EF, cancelled by an Oswestry "595" numeral. Scarce plate. Spec. C4(1). P189005230 £90



55

SG 24 1855 1d Red-brown Pl.9 (Wmk. SC, Perf. 14). Very fine used example lettered BG, neatly cancelled by a NICHOLSON/STREET type XVIII Scots local cancellation. Spec. C3(1)ya. P167009575 £70



56

SG 25 1855 1d Orange-brown Pl.1 (Wmk. Small Crown, Perf 14, Die II). Very fine unused o.g. example lettered KK with lovely colour & perforations. Spec. C3(3). P190012401 £1750



57

SG 27 1855 2d Blue Pl.5 (Wmk. Large Crown, Perf. 16, Alphabet II). Very fine used example lettered MD, neatly cancelled by an Exeter "285" numeral. Spec. F5. P190012531 £375



58

SG 29var 1855 1d Red-brown Pl.9 (Wmk. LC, Perf. 14). Very fine used example lettered RD neatly tied to a small piece by a green Cork "156" English type spoon duplex for JA.3.1856. Spec. C6(1). P167009601 £225



59

SG 29var 1855 1d Red-brown Pl.21. Very fine used example lettered SB, neatly cancelled by a crisp Newcastle on Tyne "545" numeral leaving a clear profile. Scarce plate. Spec. C6. P189006407 £110



60

SG 29 1856 1d Red-brown Pl.37. Very fine unmounted o.g. example lettered PK, fresh colour and gum. Spec. C8(1). P178005769 £300



61

SG 29a 1855 1d Red brown Pl.25 (Neal's Steam Press Experimental Printing). Very fine and fresh unused horizontal imperforate pair lettered HG-HH. A lovely multiple without any of the usual creasing as normally seen on this failed experimental printing. Spec. C8(1)h. Copy of a 1976 RPS Certificate of a block of six from which this pair was taken. P10115550 £4750



62

SG 29s 1855 1d Red brown Pl.35. Very fine and fresh unmounted o.g. example lettered IC, overprinted "SPECIMEN" type 2 reading downwards. Lovely fresh colour and gum, very scarce so fine. Spec. C8(1)t. 2015 RPS Cert. P178009140 £500



63

SG 32 1855 1d Brown-rose Pl.24. Very fine and fresh well centred unmounted o.g. example lettered OH. 1987 BPA certificate of a block of twelve from which this single was taken. P190012948 £475



64

SG 32 1855 1d Brown-rose Pl.24. Very fine and fresh well centred unused o.g. example lettered LG. 1987 BPA certificate of a block of twelve from which this single was taken. P190012936 £375



65

SG 32 1855 1d Brown-rose Pl.44. Very fine used example lettered JD, neatly tied to a small piece by a crisp Sheffield "700" type IIa (3rd recut) sideways duplex for FE.9.1857. Lovely colour and the latest recorded date for this third recut. Spec. C8(4). P178004630 £55



66

SG 34 1855 2d Blue Pl.5. Very fine unused o.g. example lettered SG. Beautiful fresh appearance and gum, scarce so fine. P190012896 £2800



67

SG 38 1857 1d Pale red Pl.44. Very fine unmounted o.g. example lettered FC. Spec. C10(2). P190007677 £125



68

SG 38 1857 1d Pale red Pl.44. Very fine unused o.g. example lettered ED. Spec. C10(2). P190007670 £100



69

SG 36 1857 1d Rose red Pl.36 (Perf. 16). Very fine used example lettered BG neatly cancelled by crisp Manchester "498" numeral. Spec. C11. P167005946 £70



70

SG 38var 1857 1d Pale rose Pl.47 (Transitional issue on cream toned paper). Very fine used example lettered FI, neatly tied to piece by a Birmingham "75" type D5 spoon duplex for JY.7.1857. Spec. C9(4). P178005914 £70



71

SG 38var 1857 1d Pale red Pl.44 (Transitional issue on cream paper). Very fine used example lettered QJ, neatly tied to a small piece by a Durham "267" type II sideways duplex for JY.17.1857. Spec. C9(4). P178004819 £70



72

SG 43 1864 1d Rose-red Pl.74. Very fine unmounted o.g. example lettered II. P189005995 £75



73

SG 44a 1865 1d Lake red Pl.97. Superb unused large part o.g. top marginal imperforate example lettered AK. Showing small part sheet inscription. Very rare. 1999 BPA Cert. P11207326 £3950



74

SG 43 1865 1d Rose-red Pl.97. Very fine unmounted o.g. example lettered JC. P189006019 £75



75

SG 43 1868 1d Rose-red Pl.110. Very fine unmounted o.g. example lettered JH. P189006037 £100



76

SG 43 1868 1d Rose red Pl.111. Very fine unmounted o.g. left hand marginal example lettered IA showing marginal sheet inscription. P190012370 £85



77

SG 43 1868 1d Rose-red Pl.111. Very fine unused o.g. right hand marginal block of eight lettered FK-IL showing large part sheet inscription. Scarce multiple. P190011477 £575



78

SG 43 1868 1d Rose-red Pl.118. Very fine unmounted o.g. example lettered CB. P189010139 £85



79

SG 43 1869 1d Rose red Pl.123. Very fine and fresh unmounted o.g. bottom marginal example lettered TC showing marginal sheet inscription. P190012368 £75



80

SG 43 1871 1d Rose-red Pl.152. Very fine unmounted o.g. example lettered BE. P189006212 £100



81

SG 43 1872 1d Rose-red Pl.157. Very fine unmounted o.g. example lettered MH. P190000150 £90



82

SG 43 1877 1d Rose-red Pl.208. Very fine unmounted o.g. example lettered EH. P190010866 £100



83

SG 43 1877 1d Rose-red Pl.209.Very fine unmounted o.g. example lettered TF. P190010867 £90



84

SG 43 1877 1d Rose-red Pl.210.Very fine unused o.g. left hand marginal example lettered QA. P190010868 £90



85

SG 45 1858 2d Blue Pl.8.Very fine well centred unused o.g. example lettered KG, scarce so fine. P14501849 £1850



86

SG 45var 1861 2d Blue Pl.9.Very fine used example lettered TA with "Error of Watermark" variety associated with this lettering, neatly cancelled by a London cds for AU.1862. and a small part London district "73" numeral. Scarce variety so fine. Spec. G2c. P189014095 £500



87

SG 45 1868 2d Blue Pl.12 (Thick line). Superb used example lettered RH, neatly cancelled by a London W.C. cds for AU.28.1869. Lovely colour, scarce plate so fine. P190012367 £150



88

SG 47 1869 2d Blue Pl.13.Very fine and fresh unused o.g. well centred block of four lettered PG-QH, a couple reinforced perforations at left nevertheless a difficult multiple. Spec. G3(1). G1674290 £1950



89

SG 48 1870 1/2d Rose-red Pl.5.Very fine used example lettered PJ, neatly cancelled by a London cds for NO.11.1870. P190011509 £50



90

SG 48 1870 1/2d Rose red Pl.6.Very fine unused o.g. example lettered IT. P190010869 £120



91

SG 48 1870 1/2d Rose-red Pl.6.Very fine used example lettered QC, neatly cancelled by a Kirkwall cds for AU.10.187?. P190011510 £45



92

SG 48 1870 1/2d Rose red Pl.8. Superb unmounted o.g. example lettered ES. An attractive example of this difficult plate. P190011076 £675



93

SG 48 1870 1/2d Rose-red Pl.8. Superb used example lettered RO, neatly cancelled by a Liverpool squared circle datestamp for OC.1.1880. Scarce plate so fine. P190011511 £150



94

SG 48wi 1870 1/2d Rose-red Pl.9. (Wmk. Inverted). Very fine used example lettered PM, neatly cancelled by a duplex cancellation well clear of both plate numbers. Scarce plate and watermark variety combination. P190011513 £550



95

SG 48 1870 1/2d Rose-red Pl.11. Very fine used example lettered QD, neatly cancelled by a part cds. P190011515 £45



96

SG 48 1870 1/2d Rose-red Pl.12. Very fine used example lettered FW, neatly cancelled by a part cds. P190011517 £45



97

SG 48 1870 1/2d Rose-red Pl.14. Very fine used example lettered IE, neatly cancelled by a crisp Liverpool cds for DE.15.1880. P190011518 £45



98

SG 49 1870 1/2d Rose Pl.15. Very fine used example lettered FL, neatly cancelled by a Liverpool Exchange "466" duplex. P190011519 £50



99

SG 48 1870 1/2d Rose-red Pl.19. Very fine used example lettered QC, neatly cancelled by a part duplex. P190011520 £50



100

SG 48 1870 1/2d Rose-red Pl.20. Very fine used example lettered CQ, neatly cancelled by a crisp Stonehouse Devon cds for JU.26.1880. P190011521 £100



101

SG 51 1870 1 1/2d Rose-red Pl.1. Very fine used example lettered LC, neatly cancelled by a London cds for JU.23.1873. P190011526 £110



102

SG 51 1870 1 1/2d Rose-red Pl.3. Very fine used example lettered DI, neatly cancelled by a Folkestone cds for DE.2.1879. P190011528 £75



103

SG 53 1870 1 1/2d Rose red Pl.1. Very fine and fresh unused o.g. example showing the OP-PC "error of lettering". Very rare so fine. Spec. G6(1)c. 2000 RPS Cert. P09011784X £22500



104

SG 55 1847 1s Green. Very fine used four margin example cancelled by a black Liverpool "466" numeral. P190012580 £650



105

SG 62a 1855 4d Carmine on highly glazed, slightly blued paper (Wmk. Small Garter). Very fine used well centred example cancelled by a part Kilmarnock "203" Experimental duplex. P190011536 £325



106

SG 63 1855 4d Carmine on thick, blued highly glazed paper (Wmk. Medium Garter). Very fine used example cancelled by a part Scottish numeral leaving a clear profile. Scarce. Cat £575. P190011544 £375



107

SG 64 1856 4d Pale carmine on thin white paper (Wmk. Medium Garter). Very fine used example cancelled by a Dover "258" numeral. Scarce. P190011545 £350



108

SG 66 1857 4d Rose-carmine (Wmk. Large garter). Very fine used example neatly cancelled by a crisp part cds for NO.6.1857. Lovely fresh colour. P190010870 £150



109

SG 66 1857 4d Rose-carmine (Wmk. Large garter). Superb used example, neatly by a crisp Malta cds for FE.1859. leaving a clear profile. Attractive overseas usage. Spec. Z47. P190011546 £150



110

SG 68 1856 6d Lilac (Wmk. Emblems). Very fine used example, neatly cancelled by a crisp London "28" City numeral. P190011549 £75



111

SG 69 1856 6d Deep Lilac (Wmk. Emblems). Very fine used example neatly cancelled by a Portsmouth "625" numeral. Wonderful intense colour. P190011548 £100



112

SG 70 1856 6d Pale Lilac (Wmk. Emblems). Very fine used left hand wing margin example, neatly cancelled by a crisp Manchester "498" numeral leaving a clear profile. Short perf at left nevertheless an attractive example of this pale shade. P190011550 £40



113

SG 72wi 1856 1s Green (Wmk. Inverted). Very fine used example neatly cancelled by a London "91" District numeral. Scarce watermark variety. P190011551 £475



114

SG 73 1856 1s Pale green. Superb used well centred example neatly cancelled by a Malta cds for MR.31. Spec. Z74. P190011554 £375



115

SG 75var 1861 3d Rose Pl.2 (State I with shaded spandrels). Superb unused o.g. block of four lettered GG-HH lightly mounted on top two stamps only, overprinted "SPECIMEN" type 6. Lovely fresh colour; very rare in this quality. Spec. J25As. G1671636 £3200



116

SG 75 1862 3d Deep carmine rose Pl.2. Very fine and fresh well centred used example lettered JC, neatly cancelled by an Edinburgh "131" duplex for P.6.1864. Wonderful deep colour; scarce issue so fine. P190011607 £575



117

SG 76 1862 3d Bright carmine rose Pl.2. Very fine and fresh well centred used example lettered CG, neatly cancelled by a Malta cds for JY.1.1864. Light corner crease at foot nevertheless a wonderful cds example. Spec. Z41. P190011608 £175



118

SG 81 1863 4d Bright-red (Hairlines Pl.4). Very fine used example lettered AD, neatly cancelled by a part "76" numeral. P190011610 £95



119

SG 84 1862 6d Lilac Pl.3. Very fine used left hand wing margin example lettered JI, neatly cancelled by a London district "71" numeral and a small part red "PD" handstamp. P190011613 £90



120

SG 87 1862 9d Straw Pl.2. Superb used example lettered EG, neatly cancelled by a crisp Exeter cds for FE.2.1866. P190011085 £650



121

SG 90 1862 1s Green Pl.1=2. Very fine used example lettered HK, neatly cancelled by a London cds for MY.14.1863. Lovely pale colour. P190011616 £300



122

SG 93 1872 4d Dull vermilion Pl.13. Very fine used example lettered KJ, cancelled by a Manchester Royal Exchange cds for FE.10.1873. P190012547 £55



123

SG 103 1872 3d Rose Pl.8. Very fine used bottom marginal example lettered EJ, neatly cancelled by a Seething Lane B.O. E.C. cds for AU.16.1872. P190012558 £80



124

SG 103 1872 3d Rose Pl.8. Very fine used example lettered MB, neatly cancelled by a crisp Telegraphic "1469" numeral. P190005169 £30



125

SG 103wi 1873 3d Rose Pl.10. (Wmk Inverted). Very fine and fresh unused o.g. example of this difficult watermark variety, lettered JK. P11207551 £2400



126

SG 109 1870 6d Mauve Pl.9. Very fine used wing margin example lettered AH, neatly cancelled Mark Lane B.O. cds for JA.1.1872. P190012539 £90



127

SG 109a 1869 6d Mauve Pl.8. Very fine and fresh unused o.g. imperforate example lettered DA, showing parts of adjoining stamps at top and bottom. One of only six confirmed mint example recorded by Galland & Louis, three of which are in institutional collections including the adjoining stamp to this (DB) in the R. M. Phillips collection at The Postal Museum. Ex. Latto Grand Prix collection. P190011925 £9500



128

SG 111 1867 9d Pale straw Pl.4. Very fine used top marginal block of four lettered AA-BB showing current number "239" in margin. Neatly cancelled by four Seething Lane B.O. cds's for FE.23.1872. A spectacular block and only the second we have handled in over 10 years. P190011933 £1500



129

SG 113 1867 10d Pale red-brown Pl.1. Very fine used example lettered KG, neatly cancelled by a Coswell Rd B.O. E.C. cds for SP.23.1872. P190012550 £275



130

SG 117 1867 1s Green Pl.4. Superb unused o.g. right hand marginal imperforate pair lettered NK-NL, overprinted "SPECIMEN" type 6. Very scarce so fine. Spec. J104s. P190012883 £1000



131

SG 117var 1871 1s Green Pl.5, Stock Exchange Forgery. Very fine used example with impossible lettering BS, used in combination with a genuine 6d Chestnut Pl.11 (SG122a) tied to a small piece by crisp Stock Exchange E.C. cds's for JY.16.1872. Most attractive. P190011086 £1100



132

SG 117 1873 1s Green Pl.7. Very fine used example lettered CF, neatly cancelled by a crisp Galashiels cds for MR.10.1873. P190012535 £90



133

SG 118var 1867 2s Blue plate proof Pl.1. Superb imperforate example lettered AJ, printed in black on thick white card. Rare. G1564261 £2500



134

SG 119 1867 2s Deep blue Pl.1. Very fine used example lettered GG, neatly cancelled by a crisp Brighton West Pier cds for MR.19.1872. P190012234 £240



135

SG 122 1872 6d Deep chestnut Pl.11. Very fine used left hand wing margin example lettered MI, neatly cancelled by a part cds for AU.1872. Lovely deep colour. P190012551 £110



136

SG 122var 1872 6d Deep chestnut Pl.11. Very fine used example lettered NF showing variety figure "11" on left damaged, neatly cancelled by a crisp Taghman double-arc cds for AU.7.1872. Attractive Irish usage. Spec. J79(2)d. P190012545 £350



137

SG 122a 1872 6d Chestnut Pl.11. Very fine used example lettered EA, neatly cancelled by a crisp Liverpool cds for JU.28.1872. P190010877 £75



138

SG 122b 1872 6d Pale Chestnut Pl.11. Very fine used example lettered AB, neatly cancelled by an upright Newport Docks cds for AU.31.1872. P190010879 £75



139

SG 123 1872 6d Pale buff Pl.12. Superb used example lettered LC, neatly cancelled by a crisp strike of a Sheffield cds for DE.26.1872. Lovely colour, scarce so fine. P190010880 £325



140

SG 125s 1873 6d Grey Pl.12. Very fine unused large part o.g. example lettered EL overprinted "SPECIMEN" type 6a. Extremely scarce, produced for the Postmaster Circular (London April 21 1873) and only the second example we have handled in 20 years. P190011939 £450



141

SG 127 1874 5s Pale rose Pl.2. Very fine used example lettered GC, neatly cancelled by a crisp Ayr cds for MY.15.1882. P190011089 £800



142

SG 128 1878 10s Grey green Pl.1. Very fine used well centred example lettered BI, neatly cancelled by a Paisley cds for AP.11.1882, Most attractive. G0901343 £2950



143

SG 129 1878 £1 Brown-lilac Pl.1. Very fine used example lettered GC, neatly cancelled by a Glasgow cds for SP.28.1882. Most attractive. 2006 RPS Cert. G1010887 £3750



144

SG 133s 1882 £5 Orange Pl.1 (Blued paper). Very fine unused o.g. example lettered DI, overprinted "SPECIMEN" type 9. An exceptional example very rare in this quality. Ex. "Verus". PI4517075 £2750



145

SG 135 1882 10s Greenish grey Pl.1 (White paper). Very fine used well centred example lettered GB, neatly cancelled by a crisp Glasgow cds for AP.16.1883. Lovely fresh appearance and deep colour. PI1207259 £4000



146

SG 140 1875 2½d Rosy Mauve Pl.2 (LH-FL error of lettering). Very fine used example of this scarce variety neatly cancelled by a crisp Newcastle upon Tyne "545" numeral. One short perforation at foot nevertheless very scarce so fine. Spec. J2b. PI90011103 £1750



147

SG 141 1878 2½d Rosy mauve Pl.13. Superb unmounted o.g. example lettered MF. Wonderful fresh colour and gum. PI90010672 £700



148

SG 141 1876 2½d Rosy mauve Pl.5. Very fine used example lettered HG neatly cancelled by a crisp London cds for AU.19.1876. PI90012388 £85



149

SG 143 1873 3d Rose Pl.11. Very fine unused o.g. example lettered GL. Lovely colour. PI90012537 £450



150

SG 150 1875 1s Green Pl.12. Very fine used left hand wing margin example lettered SE, neatly cancelled by a Fenchurch Street B.O. E.C. cds for MY.8.1875. PI90012392 £150



151

SG 153 1877 4d Sage green Pl.16. Very fine and fresh unused o.g. example lettered BH, superb quality with only the meereest trace of a previous hinge. G1455349 £1400



152

SG 154 1880 4d Grey-brown Pl.17 (Wmk. Garter). Exceptionally fine and fresh unmounted o.g. example lettered SG. A very difficult stamp to find in this quality. PI90011950 £3250



153

SG 154 1880 4d Grey brown Pl.17 (Wmk. Garter). Superb well centred unused o.g. example lettered KD, very scarce so fine. PI89015476 £2800



154

SG 154 1880 4d Grey-brown Pl.17.Very fine used example lettered OC, cancelled by a London Inland Branch "Fancy Geometric" squared circle datestamp for JA.21.1881. (Type IIA) P190012396 £395



155

SG 158 1881 3d Rose Pl.21.Very fine used well centred example lettered GI, neatly cancelled by a crisp Registered/London cds for DE.12.1882. Lovely fresh colour and good centring. P178009775 £130



156

SG 159 1883 3d on 3d Lilac Pl.21.Very fine unused large part o.g. example lettered HJ.A presentable example. Cat £650. P190012538 £375



157

SG 160 1880 4d Grey-brown Pl.18.Very fine used example lettered OH, neatly cancelled by a crisp Sheffield cds for FE.27.1882, leaving a clear profile. Most attractive. P16704883 £90



158

SG 162 1883 6d on 6d Lilac Pl.18. Superb used example lettered SI, neatly cancelled by an Accountant's Office cds for NO.5.1883. P190010881 £150



159

SG 163 1881 1s Orange-brown Pl.13.Very fine used example lettered JE, cancelled by a crisp Bristol cds for AU.20.1881. Attractive. P190010882 £160



160

SG 166 1880 1d Venetian red.Very fine and fresh unmounted o.g. example lettered MK. P190010885 £45



161

SG 167 1880 1 1/2d Venetian red.Very fine and fresh unmounted o.g. example. P190004844 £325



162

SG 167 1880 1 1/2d Venetian red. Superb used example neatly cancelled by a Southsea B.O. Portsmouth cds for SP.8.1883. Lovely fresh colour. P189005240 £75



163

SG 168var 1881 2d Deep rose official reproduction.Very fine unmounted o.g. sheetlet of six impressions on unwatermarked paper, arranged in two rows of three tête-bêche (mounted on sheet margin only).Very little is known regarding these essays but they were probably produced as part of the "Jeffrey's Scheme" for the unified series in 1881-82. Scarce. G1564522 £1800



164

SG 168a 1880 2d Deep rose. Superb used example cancelled by an upright Hastings cds for JA.20.1880. Scarce so fine. P190010883
£120



165

SG 169 1881 5d Indigo. Superb used example beautifully cancelled by a crisp Milford Haven cds for DE.13.1883. Most attractive. P167006462 £175



166

SG 172, 197 & 201 1881-87 1/2d Vermilion & 1d lilac (Die II) and 2 1/2d Purple/blue "Jubilee". Two pieces bearing a 1/2d Vermilion (SG197, Perfin) and two 1d Lilac (SG172, Perfin) and another bearing a single 2 1/2d purple/blue (SG201) tied by Swedish "Fran Utlandet" (From Abroad) handstamps. An attractive and unusual group. P190011904 £75



167

SG 170 1881 1d Lilac (Die I, 14 dots). Very fine unused o.g. example. Spec. K7(1). P190012540
£225



168

SG 170 1881 1d Lilac (Die I, 14 dots). Very fine used example neatly cancelled by a Birmingham squared circle for AU.8.1881. P190011742 £50



169

SG 172var 1881 1d Colour trial (Die 2, 16 Dots). Very fine imperforate example printed in mauve on white gummed, Crown watermarked paper. Scarce. Ex. "Verus". P14514988 £2250



170

SG 172wi 1881 1d Lilac (Die II, Wmk. Inverted). Very fine and fresh unmounted o.g. top left hand corner marginal block of twelve. Scarce multiple. P190011618 £875



171

SG 172wi 1881 1d Lilac (Die II, Wmk. Inverted). Very fine and fresh unmounted o.g. left hand marginal example. P190011646 £75



172

SG 172 1881 1d Lilac (Die II, 16 dots).Very fine bisected example tied to a small piece by a Thorverton cds for SP24.1900.Attractive and unusual usage. P190011747 £45



173

SG 172 1881 1d Lilac (Die II, 16 Dots).Very fine used example cancelled by a Falkland double ring cds for AP.12.1901.Attractive overseas usage. P190012158 £60



174

SG 172 1881 1d Lilac (Die II, 16 Dots).Very fine used example cancelled by a Jaffa Österreichische Post (Austrian Post) cds for JY.2.1898.Attractive overseas usage. P190012161 £75



175

SG 172 1881 1d Lilac (Die II, 16 Dots).Very fine used example neatly tied to a small piece by a crisp Rio De Janeiro "Paquetbot" datestamp for 1901. P190011908 £60



176

SG 172 1881 1d Lilac (Die II, 16 Dots).Very fine used example cancelled by a part crisp blue Saigon datestamp.Attractive overseas usage. P190012164 £125



177

SG 175s 1883 2s6d Lilac (Blued paper). Superb unused o.g. example lettered EC, overprinted "SPECIMEN" type 9. Lovely colour and blueing, very scarce so fine. P190013130 £625



178

SG 176 1884 5s Rose (Blued paper).Very fine and fresh unused o.g. example lettered KF.Very scarce so fine. P11211091 £12000



179

SG 176 1884 5s Rose (Blued paper). Superb used well centred example lettered ID, beautifully cancelled by a crisp Dingwall cds for JY.18.1884. Lovely fresh colour, rarely seen so fine. 2004 BPA Cert. G1010542X £4000



180

SG 178 1884 2s6d Lilac.Very fine unused o.g. example lettered BE. P190012584 £600



181

SG 179 1884 2s6d Deep Lilac.Very fine used example lettered DE, neatly cancelled by a crisp Lombard St B.O. cds for OC.4.1897. P190012585 £225



182

SG 180 1884 5s Rose.Very fine used example lettered AF, neatly cancelled by a 28 Charlwood St. S.W. cds for JY.1.1893. Showing an unusual year slug error. P190012586 £250



183

SG 183 1884 10s Ultramarine.Very fine and fresh well centred unmounted o.g. example lettered GC. Lovely colour. P190012931 £2750



184

SG 183 1884 10s Ultramarine. Superb used example lettered GD, neatly cancelled by a crisp Huddersfield cds for OC.7.1886 with year slugs showing signs of re-striking possibly due to initial year slug input error by the postal clerk. Attractive. P190012255 £500



185

SG 183a 1884 10s Pale ultramarine. Superb used example lettered DF, beautifully cancelled by a crisp Sunderland cds for JY.5.1887. Lovely colour, scarce so fine. P189012224 £550



186

SG 185 1884 £1 Brown lilac (Wmk. Crowns). Very fine used well centred vertical pair lettered PB-QB, both stamps neatly cancelled by crisp Belfast cds for FE.3.1891, folded along horizontal perforations between adhesives and the bottom stamp bearing light red crayon marks at lower left nevertheless a beautiful multiple with lovely fresh colour and good centring. Cat £6000. P167001384 £3750



187

SG 185 1884 £1 Brown-lilac (Wmk. Three Crowns). Very fine used example lettered NC, neatly cancelled by a crisp West Strand cds for AP.25.1890. with a small second part cds at left. Lovely deep colour, scarce so fine. G1671785 £2500



188

SG 188 1884 1 1/2d Lilac. Very fine unmounted o.g. example lettered KI. P190012543 £150



189

SG 188 1883 1 1/2d Lilac. Very fine used example lettered SE neatly cancelled by a London cds for MY.3.1884. P190011748 £45



190

SG 190 1883 2 1/2d Lilac. Superb unmounted o.g. example lettered KE. P190012546 £125



191

SG 190 1884 2 1/2d Lilac. Very fine used example lettered LQ neatly cancelled by a part London cds. P190007435 £25



192

SG 191 1883 3d Lilac. Very fine used example lettered BF, neatly cancelled by a Deal cds for JA.5.1886. P190003571 £100



193

SG 192 1884 4d Dull green. Pristine unmounted o.g. example lettered PI. Scarce so fine. 1997 RPS Cert. P189015780 £725



194

SG 194var 1883 6d Die Proof. Very fine example printed by DLR in black on white glazed card (92 x 60mm) endorsed "AFTER STRIKING" and dated "28 SEP 83". Very scarce. P190012893 £1200



195

SG 195 1883 9d Dull green. Very fine unmounted o.g. example lettered GE, slightly off-white gum nevertheless lovely colour and much finer than normally seen. G1230292
£975



196

SG 195 1883 9d Dull green. Very fine and fresh used example lettered CP, neatly cancelled by a Halifax cds for MY.12.1884. P190012400 £450



197

SG 196 1884 1s Dull green. Very fine used example lettered DK, neatly cancelled by a Corn Exchange Liverpool cds for JY.21.1884. P190011749 £325



198

SG 197awi 1887 1/2d Vermilion "Jubilee" (Wmk. Inverted). Very fine unmounted example printed on the gummed side. Slight rubbing at foot nevertheless an attractive example of this scarce variety. Spec. K27d. Cat £4500.
P16700483 £2800



199

SG 197 1887 1/2d Vermilion "Jubilee". Very fine used example cancelled by a Paramaribo cds for 1896. Attractive overseas usage.
P190012156 £75



200

SG 197 1887 1/2d Vermilion "Jubilee". Superb used example cancelled by a crisply struck Honolulu, H.W. (Hawaii) cds for JU.3. Attractive overseas usage. P190012034 £95



201

SG 197 1887 1/2d Vermilion "Jubilee". Very fine used example cancelled by a crisply struck Kilauea, Kauai (Hawaii) cds for JA.10.1890. Attractive overseas usage. P190012038 £95



202

SG 197 1887 1/2d Vermilion "Jubilee". Very fine used example cancelled by a Bombay datestamp for AP.7.1893. Attractive overseas usage.
P190012145 £75



203

SG 197 1887 1/2d Vermilion "Jubilee". Very fine used example cancelled by a Vancouver datestamp for NO.19.1897. Attractive overseas usage. P190012146 £75



204

SG 197 1887 1/2d Vermilion "Jubilee". Very fine used example cancelled by a Johannesburg cds for FE.1895. Attractive overseas usage.
P190012154 £75



205

SG 197 1887 1/2d Vermilion "Jubilee". Very fine used example cancelled by a Labuan cds. Attractive overseas usage. P190012152 £75



206

SG 198b 1887 1½d Dull purple and pale green "Jubilee". Very fine unused o.g. corner marginal block of six showing "deformed leaf" variety on duty plate 4 position R.19/1 (variety unmounted o.g.). A very scarce variety, attractive positional piece. Spec. K29e. P19001105 £1100



207

SG 199 1887 2d Green and scarlet. Very fine used example cancelled by a Blockley cds for MR.7.1900. P190011774 £250



208

SG 200s 1887 2d Grey-green & carmine "Jubilee". Very fine unused o.g. example overprinted "SPECIMEN" type 9. Spec. K30(3)s. P15608154 £60



209

SG 200 1887 2d Grey-green and carmine "Jubilee". Very fine used example cancelled by an Eastbourne cds. P190011776 £25



210

SG 201 1887 2½d Purple/blue "Jubilee". Very fine used example neatly cancelled by a crisp Aden squared circle datestamp for FE.18.1895. Attractive overseas usage. P190011997 £75



211

SG 201 1887 2½d Purple/blue "Jubilee". Very fine used example neatly cancelled by a London Foreign Branch Office "A01" numeral cancellation formerly used in Kingston, Jamaica. P190012002 £40



212

SG 201 1887 2½d Purple/blue "Jubilee". Superb used example tied to small piece by a bright blue Marseille De La Republique/ Outremere datestamp for NO.3.1893. with a second strike alongside. Scarce overseas usage. P190011940 £100



213

SG 201 1887 2½d Purple/blue "Jubilee". Very fine used example tied to small piece by a Colombo (Ceylon) cds for MR.22.1894. and a Colombo "A" handstamp. Scarce overseas usage. P190011956 £100



214

SG 201 1887 2½d Purple on blue "Jubilee" Very fine used example cancelled by a "BALTASOUND" mailbag seal from Unst in the Shetland Isles. Most unusual. P189002176 £95



215

SG 201 1887 2½d Purple/blue "Jubilee". Very fine used example cancelled by a Kalewa (Burma) squared circle datestamp for AP.11.1896. Most unusual overseas usage. P190011931 £95



216

SG 201 1887 2½d Purple/blue "Jubilee". Very fine used example cancelled by a crisp Penang, Malaysia cds for OC.9. Attractive overseas usage. P190011996 £75



217

SG 201 1887 2½d Purple/blue "Jubilee". Very fine used example tied to a small piece by a crisp black "OSTENDE" handstamp of Belgium. P190011905 £75



218

SG 201 1887 2½d Purple/blue. Very fine piece bearing a horizontal pair of 2½d Purple/blue (SG201's) both tied by single "Napoli Succle..." squared circle datestamp for OC.15.1896. Attractive Anglo-Italian combination. P190011926 £75



219

SG 201 1887 2½d Purple/blue "Jubilee". Very fine piece bearing a 2½d Purple/blue (SG201) tied by a Bootheel handstamp with a Barbados cds alongside for AP.19.1897. Attractive overseas usage P190011927 £75



220

SG 201 1887 2½d Purple/blue "Jubilee". Superb used example neatly cancelled by a crisp Dominica cds for SP.3.1897. Attractive overseas usage. P190012000 £75



221

SG 201 1887 2½d Purple/blue "Jubilee". Very fine used example tied to small piece by a Correo Montevideo datestamp for NO.19.1898. Scarce overseas usage. P190011984 £60



222

SG 205a 1887 4d Green and deep brown "Jubilee". Very fine used example cancelled by an Edwards Square Kensington cds for MY.8.1901. P190011780 £25



223

SG 206 1892 4½d Green and carmine "Jubilee". Superb used example neatly cancelled by a crisp Bangkok cds. Very rare overseas usage. P190012009 £175



224

SG 206 1892 4½d Green and carmine "Jubilee". Very fine used example cancelled by a Banbury cds for SP.23.1896. P190011782 £45



225

SG 207 1887 5d Dull purple & blue (Die I). Very fine used example neatly cancelled by two London fancy geometric datestamps. P190011784 £120



226

SG 207s 1887 5d Dull purple & blue (Die I). Very fine and fresh unmounted o.g. example overprinted "SPECIMEN" type 9. Spec. K35s. P189010929 £160



227

SG 208 1887 Purple/rose "Jubilee". Very fine used example neatly cancelled by a Reykjavik cds for JA.11.1891. Attractive overseas usage. P190012017 £75



228

SG 208 1887 6d Purple/Rose-red "Jubilee". Very fine used example neatly cancelled by a part cds for JY.1.1895. P190011789 £25



229

SG 209 1887 9d Dull purple and blue "Jubilee". Very fine used horizontal pair cancelled by a single upright Kingston Jamaica cds for AP.11.1901. P190012033 £150



230

SG 210 1890 10d Dull purple & carmine "Jubilee". Very fine unmounted o.g. example. P190004687 £90



231

SG 210 1890 10d Dull purple & carmine. Superb used example beautifully cancelled by a crisp Spalding cds for JU.3.1902. P190012532 £50



232

SG 210a 1890 10d Dull purple & deep dull carmine "Jubilee". Superb used example cancelled by a crisp 2d Registered Manchester oval datestamp. Stunning colour, an exceptional example. P190011803 £250



233

SG 210b 1890 10d Dull purple & scarlet "Jubilee". Very fine used example neatly cancelled by a crisp East Sheen S.W. cds for MY.5.1893. P190011804 £65



234

SG 211var 1886 1s "Jubilee" Die Proof. Very fine die proof cut to stamp size and mounted on buff card (53 x 55mm) endorsed "July 8, July 14, 2 Formes, 240 Leads each. 6 extra Leads July 14" with additional red ink inscriptions removed. Unique. Cat £1850. Ex. DLR Archive & "Aureum". P15611398 £1450



235

SG 211var 1887 1s Grey-green. Very fine unused o.g. example of this more difficult 1s shade. Spec. K40(2). P190006447 £325



236

SG 211 1887 1s Dull green "Jubilee". Very fine used example neatly cancelled by a Mark Lane B.O. E.C. cds for SP.25.1894. P190011805 £80



237

SG 212 1891 £1 Green. Very fine and fresh well centred unmounted o.g. example lettered EB, very scarce so fine. G1674374 £5000



238

SG 212 1891 £1 Green. Superb used example lettered HD, beautifully cancelled by a crisp Liverpool thimble cds for JA.22.1894. An exceptional example. P189015064 £850



239

SG 214 1900 1s Green & carmine "Jubilee". Superb unmounted o.g. bottom left hand corner marginal block of fifteen. Scarce multiple so fine. P190012917 £1500

Shown at 92%



240

SG 214 1900 1s Green and carmine. Superb used example beautifully cancelled by a crisp Lancaster cds for DE.21.1901. P190012533 £140



241

SG O4 1882 6d Grey Pl.18 (I.R. Official). Very fine and fresh unmounted o.g. example lettered FC. Scarce so fine. P190011151 £750



242

SG O9b 1890 5s Rose (I.R. Official). Superb unmounted o.g. example of this rare departmental issue with overprint in blue-black lettered LA. 1979 RPS Certificate. P10109847 £14000



243

SG O15 1889 1s Dull green (I.R. Official). Very fine unused o.g. example of this scarce departmental issue. 2012 BPA Cert. P189005635 £1000



244

SG O63 1883 9d Dull green (Govt. Parcels). Fine used example of this difficult departmental issue lettered EI, cancelled by a Dumfries cds for JY.188?. A presentable example of this difficult departmental issue. Cat £1200. P189003552 £950



245

SG O64 1883 1s Orange-brown Pl.13 (Govt. Parcels). Very fine well centred used example lettered MH, neatly cancelled by an unusual GPO London Parcels Post Depot hooded circle for NO.8.1884. Very rarely seen so fine. P178004209 £375



246

SG O66s 1887 6d Purple/rose red (Govt. Parcels). Very fine unused o.g. example overprinted "SPECIMEN" type 15. P14508413 £275



247

SG O67 1888 9d Dull purple & blue (Govt. Parcels). Superb unmounted o.g. bottom marginal example. Very scarce so fine. P190011960 £550



248

SG O72 1900 1s Green & carmine (Govt. Parcels). Very fine and fresh unmounted o.g. example. Scarce so fine. 1989 RPS Cert. P15602631 £825



249

SG 218b 1904 1/2d Yellowish green (Wmk. Inverted). Very fine unmounted o.g. booklet pane with St. Andrews cross label and binding selvedge. Straight edge at foot but label and adjacent stamp with full perfs. Cat. £975 P190008036 £275



250

SG 218aw 1906 1/2d Yellowish green. Very fine unmounted o.g. booklet pane of five plus St. Andrews Cross label (Perf type E). Good to excellent perfs, far finer than normally seen. 2015 BPA Cert. P178009504 £975



251

SG 219s 1902 1d Bright scarlet. Very fine unused o.g. example printed by DLR, overprinted "SPECIMEN" type 22. Spec. M5(2)w. Ex. "Minoru". P15611918 £275



252

SG 221 1902 1½d Dull purple & green (O). Very fine unmounted o.g. example printed by DLR. Spec. M8(1). P189016950 £95



253

SG 222 1902 1½d Slate-purple & green (O). Very fine unmounted o.g. top left hand corner marginal block of four printed by DLR. Spec. M8(2). P190013013 £450



254

SG 222 1902 1½d Slate-purple & green (O). Very fine unmounted o.g. example printed by DLR. Spec. M8(2). P190013002 £95



255

SG 226 1904 2d Grey-green and carmine-red (O). Very fine unmounted o.g. top right hand corner marginal example printed by DLR. Spec. M11(4). P190011978 £150



256

SG 227 1906 2d Pale grey-green & carmine red (C). Very fine unused o.g. example printed by DLR. P189005949 £45



257

SG 228var 1910 2d Grey-green & scarlet (C). Very fine unmounted o.g. example printed by DLR. Spec. M12(4). P189017040 £80



258

SG 228var 1906 2d Grey-green & scarlet (C). Superb used example printed by DLR, neatly tied to a small piece by a crisp Hollow cds for JU.7.1911, showing "Deformed Tablet" variety from Pl.D4. position R.5/9. A wonderful example of this difficult variety. Spec. M12(1)d. P178014286 £850



259

SG 230s 1902 2½d Ultramarine. Very fine unmounted o.g. example printed by DLR, overprinted "SPECIMEN" type 15. Spec M16s. P14516358 £104.17



260

SG 232c 1906 3d Pale reddish purple/orange-yellow (C). Very fine unmounted o.g. example printed by DLR. Spec. M20(1). P189015986 £425



261

SG 233 1906 3d Dull reddish purple/yellow (C). Very fine unused o.g. example printed by DLR. Spec. M20(3). P190007149 £225



262

SG 234 1906 3d Purple/lemon (C). Very fine unmounted o.g. example printed by DLR. Spec. M20(5). P189017117 £85



263

SG 236a 1906 4d Green and chocolate-brown (C). Very fine unmounted o.g. example printed by DLR. Spec. M24(1) P178003616 £75



264

SG 238 1906 4d Deep green & Chocolate-brown (C). Superb used example printed by DLR, neatly tied to a small piece by a crisp Glasgow & Carlisle S.O. (Sorting office)/Up Special Railway datestamp for AU.27.1908. Very attractive. Spec M24(2). P189000368 £25



265

SG 242 1902 5d Dull purple & ultramarine (O). Very fine unmounted o.g. example printed by DLR. Spec. M28(1). P190011217 £130



266

SG 242a var 1906 5d Dull purple & ultramarine (C). Very fine unused o.g. example printed by DLR, overprinted "CANCELLED" type 19. A magnificent example of this extremely rare overprint. Spec M29(1)t. Ex. NPM Archive sale. P190011953 £2250



267

SG 243a 1906 5d Slate purple and ultramarine (C). Very fine unmounted o.g. example printed by DLR. Spec M29(2). P15607774 £115



268

SG 245aas 1902 6d. Pale dull purple. Superb unmounted o.g. example printed by DLR, overprinted "SPECIMEN" type 15. Spec M31s. Ex. "Minoru". P14508537 £400



269

SG 248 1906 6d Dull purple (C). Very fine unmounted o.g. right hand marginal example printed by DLR. Spec. M32(2). P190011981 £85



270

SG 250 1902 9d Dull purple and ultramarine (O). Very fine unmounted o.g. top right hand corner interpanneau marginal block of four printed by DLR. Spec M39(1). P190013015 £1250



271

SG 250 1902 9d Dull purple and ultramarine (O). Very fine unmounted o.g. example printed by DLR. Spec M39(1). P190013016 £275



272

SG 251a 1905 9d Slate purple & ultramarine (C). Very fine unused o.g. example printed by DLR. Spec. M40(3). P190007145 £140



273

SG 255 1906 10d Slate purple and carmine (C). Very fine unmounted o.g. example printed by DLR. Spec. M43(2). P190011993 £275



274

SG 256 1910 10d Dull purple and scarlet (C). Very fine unused o.g. example printed by DLR. Spec. M43(5) P190010611 £140



275

SG 257 1902 1s Dull green & carmine (O). Very fine unmounted o.g. example printed by DLR. Spec. M46(1). P178003669 £220



276

SG 266 1902 £1 Dull blue-green. Very fine and fresh unused o.g. example printed by DLR, a lovely example showing only the meereest trace of a previous hinge. Spec. M55(1). P05604640X £2000



277

SG 276wi 1911 2½d Bright blue (Perf. 14 Wmk. Inverted). Very fine unused o.g. bottom marginal "date cut" example of this difficult watermark variety printed by Harrison & Sons. Spec. M17(2). P190013133 £1250



278

SG 277var 1911 3d Dull reddish purple/lemon (Perf. 14). Very fine unmounted o.g. example printed by Harrison & Sons. Spec. M21(4). P190013282 £225



279

SG 278 1911 4d Bright orange (Perf. 14). Very fine unused o.g. example printed by Harrison & Sons. Spec. M26(1). P190010607 £120



280

SG 285 1911 3d Purple/lemon (Perf. 15x14). Very fine unused o.g. example printed by Harrison & Sons. Spec. M22(1). P189017263 £45



281

SG 287var 1912 1½d Dull reddish purple & green. Very fine unmounted o.g. example printed at Somerset House. Spec. M10(4). P189017007 £55



282

SG 289 1912 1½d Slate purple & green (F). Very fine unmounted o.g. example printed at Somerset House. Spec. M10(7). P16700919 £65



283

SG 293 1911 5d Dull reddish purple & bright blue. Very fine unmounted o.g. example printed at Somerset House. Spec. M30(2). P189006515 £60



284

SG 296 1911 6d Bright magenta (C). Superb unmounted o.g. bottom right hand corner marginal example printed at Somerset House. Very rare so fine. Spec. M35. Ex. Silkin. 1958 RPS Cert. P10100123 £17500



285

SG 298 1911 6d Reddish purple (F). Very fine unmounted o.g. example printed at Somerset House. Spec. M33(2). P189017621 £60



286

SG 301 1913 6d Dull purple (Dickinson coated paper). Very fine used example printed at Somerset House neatly cancelled by a crisp Wroughton cds for MY.8.1913. A wonderful example of this difficult issue. 1988 BPA Cert. Spec. M34(1). P189000628 £250



287

SG 306 1911 9d Reddish purple & light blue. Very fine unmounted o.g. example printed at Somerset House. Spec. M41(1). P190012005 £200



288

SG 307 1911 9d Dull reddish purple and blue. Very fine unmounted o.g. example printed at Somerset House. Spec. M41(3). P189006529 £125



289

SG 307a 1913 9d Deep plum & blue. Very fine unmounted o.g. bottom corner marginal "date cut" example printed at Somerset House. Spec. M41(5). P189008912 £125



290

SG 309var 1911 10d Dull reddish purple & scarlet. Very fine unused o.g. example printed at Somerset House. Spec. M44(1). 2009 BPA Cert. P190012010 £225



291

SG 309var 1911 10d Dull reddish purple & scarlet. Very fine unmounted o.g. example printed at Somerset House. Spec. M44(1). 2009 BPA Cert. P190012930 £425



292

SG 309var 1911 10d Dull reddish purple & scarlet (O). Very fine and fresh used example printed at Somerset House, cancelled by a crisp Tenby cds for MY.13.1912. Attractive. Spec. M44(1). P189015041 £110



293

SG 311 1912 10d Dull reddish purple & Carmine. Very fine unmounted o.g. example printed at Somerset House. Spec. M44(6). P190012022 £150



294

SG 313s 1911 1s. Deep green and scarlet. Fine unused o.g. example printed by Somerset House, overprinted "SPECIMEN" type 22. Spec M47s. Ex. "Minoru" P14508526 £300



295

SG 314 1912 1s Green & carmine. Superb unmounted o.g. example printed at Somerset House. Spec. M47(5). P189003044 £140



296

SG 316var 1913 2s6d Pale dull reddish purple Pl.1c. Very fine and fresh unused o.g. date-cut pair from the final Somerset House printing with cuts under 12th and added white dot at right. Scarce. Spec. M50(4). P190012032 £700



297

SG 316s 1911 2s6d Dull reddish purple. Very fine unused o.g. example printed at Somerset House, overprinted "SPECIMEN" type 22. Spec M50(2)s. Ex. NPM Archive sale. P190011955 £425



298

SG 318 1912 5s Carmine. Very fine unmounted o.g. example. Spec. M52(2). P190012884 £875



299

SG 318 1912 5s Carmine. Very fine unused o.g. example printed at Somerset House. P190010603 £425



300

SG 319 1912 10s Bright blue. Superb unmounted o.g. example printed at Somerset House. Lovely fresh colour and gum. Spec. M54(1). P190007193 £2100



301

SG 319 1911 10s Blue. Very fine and fresh unused o.g. bottom marginal example printed at Somerset House. Spec. M54(2). G1673884 £1100



302

SG 320 1911 £1 Deep green. Very fine and fresh used vertical pair neatly cancelled by a pair of Guernsey cds's for JY.9.1912. Spec. M56(1). P11211435 £1250



303

SG 320 1911 £1 Deep green. Very fine unused o.g. top marginal example printed at Somerset House. Spec. M56(1). P189017913 £2000



304

SG O40 1902 10d Dull purple & carmine (O.W. Official). Very fine used example of this rare departmental issue neatly cancelled by a small part lightly struck cds. Most attractive. 1920 RPS and 2005 BPA Certificates. G1120766 £7000



305

SG O74/8var 1902 1d-1s Government Parcels. Very fine unused o.g. set of five overprinted "SPECIMEN" type 16, mounted on a page from an official presentation album, headed "Government Parcels". Super colours, scarce so fine. P190012935 £1950



306

SG O76 1902 6d Pale dull purple (Govt. Parcels). Very fine used example neatly cancelled by a crisp Weymouth cds for MY.12.1904. P190012259 £60



307

SG O91/2 1902 1/2d Blue green & 1d Scarlet (R.H. Official). Very fine unmounted o.g. set of two. Scarce. P190012582 £975



308

SG O91 1902 1/2d Blue-green (R.H. Official). Very fine used example cancelled by a Windsor double ring cds for SP.3.1903. P189005408 £175



309

SG O105 1903 2 1/2d Ultramarine (Admiralty Official, type O10). Very fine used well centred example neatly cancelled by a Chatham cds for OC.19.1903. Lovely fresh colour. P189002148 £150



310

SG O106 1903 3d Purple/Orange-yellow (Admiralty Official, type O10). Very fine used example cancelled by a part Registered oval datestamp. Scarce departmental issue. 2006 BPA Cert. P189002149 £160



311

1911 7d Henschel essay. Very fine small format zinc block essay produced by Winston & Sons using the printex method, printed in blue on white unwatermarked paper with the print number "W6" at top. P190012910 £180



312

SG 324wi 1911 1/2d Yellow green (Die 1B, Wmk. Crown Inverted). Very fine unmounted o.g. example. Spec. N2(3)a. P190006946 £35



313

SG 335s 1912 1/2d Green (Die 1b, Wmk. Simple Cypher). Very fine unmounted o.g. example overprinted "SPECIMEN" type 22 with booklet selvedge at left. Scarce. P178012020 £325



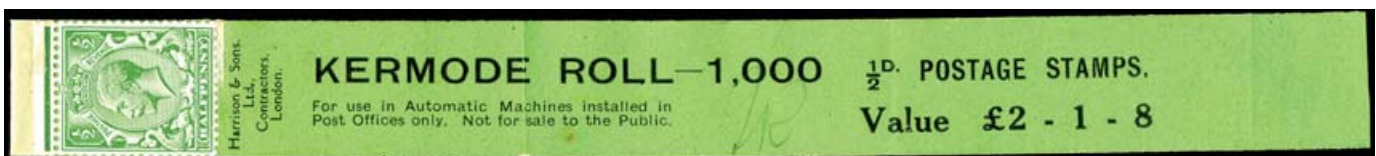
314

SG 341var 1912 1d Carmine (Paper Trial). Very fine unused imperforate horizontal pair printed on John Allen special finish very thin paper. Wove paper trial Spec (b). P190008413 £140



315

SG 351/96 1912-24 1/2d-1s "Definitives" (Wmk. Royal Cypher). Very fine unused o.g. set of fifteen. P190010606 £250



316

SG 351 1920 1/2d Green. Superb black on green Kermode coil leader with one stamp attached. Scarce. P190008453 £175



Shown at 80%

317

SG 362 1918 1½d Red-brown. Superb brown on brown coil leader (Code L) with correct printed value, £3 2 7. Scarce. PI90008478 £400



318

SG 357wj 1912 1d Bright scarlet (Wmk. Royal Cypher, reversed). Very fine unused o.g. example of this scarce watermark variety. Spec. N16(1)c. PI90001320 £95



319

SG 364a 1912 1½d Chestnut. Very fine unmounted o.g. right hand marginal vertical pair with thick chestnut rule showing "PENCF" variety on bottom stamp from PI 29, R.15/12. Spec. N18(13)f. PI90001525 £175



320

SG 372s 1912 2½d Blue. Very fine unused o.g. left hand marginal example overprinted "SPECIMEN" type 23. Spec. N21t. PI4510244 £120



321

SG 381wi 1913 5d Brown (Wmk. Royal Cypher, Inverted). Very fine unmounted o.g. example of this difficult watermark variety. Spec. N25(1)b. PI90004137 £1800



322

SG 387 1913 7d Olive (Wmk. Royal Cypher). Very fine unused o.g. bottom left hand corner marginal D14 perf type 2A(P) horizontal control pair. Spec. N27(1). PI90004216 £45



323

SG 390 1914 8d Black/yellow. Very fine unmounted o.g. bottom corner marginal D14, Perf type 2(E.) control strip of three. PI89010963 £185



324

SG 390 1916 8d Black/yellow. Very fine unmounted o.g. bottom marginal H16, Perf type 2(E.) control example. PI89010954 £65



325

SG 392wi 1913 9d Agate (Wmk. Royal Cypher Inverted). Very fine unused o.g. example. Spec. N29(1)b. PI90004309 £175



326

SG 393awi 1922 9d Olive green (Wmk. Royal Cypher Inverted). Very fine unmounted o.g. bottom left hand corner marginal example of this difficult watermark variety, the variety clearly showing in the sheet margin. Scarce. PI90012938 £1200



327

SG 395wi 1913 1s Bistre (Wmk. Royal Cypher; Inverted). Very fine unused o.g. example. Spec N32(1)b. P190004426 £250



328

SG 396var 1920 1s Deep bronze-brown (Wmk. Royal Cypher). Superb unused o.g. example of this very difficult shade. Lovely deep vibrant colour. Spec N32(10). P190004437 £1000



329

SG 401var 1913 5s Rose carmine. Very fine well centred unmounted o.g. example overprinted "SPECIMEN" type 26. Scarce. Spec. N66(1)s. P190012887 £975



330

SG 401 1913 5s Rose-carmine. Very fine used example neatly cancelled by a crisp Leigh Road/Southend on Sea cds for OC.11.1913, leaving a clear profile. Spec. N66(1). P189007313 £325



331

SG 402 1913 10s Indigo-blue. Very fine used well centred example printed by Waterlow, neatly cancelled by a crisp Threadneedle St. B.O. cds for SP.15.1914 with a second small part cds at upper right. Lovely colour. Spec. N69(1). P189007106 £375



332

SG 403 1913 £1 Green. Very fine and fresh well centred unused o.g. bottom marginal example printed by Waterlow. Spec. N72(1). P190004577 £2750



333

SG 403var 1913 £1 Green. Very fine and fresh well centred unmounted o.g. example printed by Waterlow, overprinted "SPECIMEN" type 26. Spec. N72(1)t. P06707261 £2500



334

SG 405 1915 2s6d Deep yellow-brown. Very fine unused o.g. lightly mounted example printed by DLR. Spec. N64(5). P190000797 £375



335

SG 406 1915 2s6d Pale yellow-brown. Very fine and fresh unused o.g. top left hand corner marginal block of four printed by DLR. Minor surface scuff to bottom left example nevertheless an attractive multiple. Spec. N64(7). P190004484 £1250



336

SG 406 1915 2s6d Yellow-brown. Superb unused o.g. lightly mounted example printed by DLR. Spec. N64(6). P190000796 £325



337

SG 407a 1915 2s6d Grey-brown. Very fine used example printed by DLR from Pl.3 position R.2/1 showing clear evidence of re-entry. Neatly cancelled by a small part cds at lower left. Scarce so fine. Spec. N64(3)a. P189011617 £950



338

SG 409var 1915 5s Carmine. Superb unmounted o.g. example printed by DLR. Scarce. Spec. N67(2). P178011467 £1250



339

SG 411var 1915 10s Deep bright blue. Very fine and fresh well centred unmounted o.g. example printed by DLR. A lovely example of this difficult "Seahorse" shade. Spec. N70(6). 2006 BPA Cert. P16704835 £6250



340

SG 412 1915 10s Blue. Very fine unused o.g. example printed by DLR. Lovely fresh colour, gum and centring. Spec. N70(1). 2008 BPA Cert. P178004248 £3250



341

SG 413a/417 1918-19 2s6d-10s. "Seahorses". Very fine and fresh unused o.g. set of three printed by Bradbury Wilkinson. P190011222 £850



342

SG 413a 1918 2s6d Olive-brown. Very fine used example printed by Bradbury Wilkinson, neatly cancelled by a lightly struck S. Kensington cds for NO.2.1921, leaving the King's profile clear. Spec. N65(1). P189007119 £100



343

SG 416var 1918 5s Rose-carmine. Very fine used example printed by Bradbury Wilkinson, neatly cancelled by a Gee Cross cds for JY.4.1930 leaving the King's profile clear. Spec. N68(1). P189007137 £135



344

SG 417a 1919 10s Dull grey-blue. Very fine and fresh unmounted o.g. top left hand corner marginal example printed by Bradbury Wilkinson from plate 1/3L showing clear evidence of major re-entry. Scarce. Spec. N71(2)a. P190000343 £2250



345

SG 418a 1927 1/2d Green (Wmk. Sideways). Very fine black on green coil leader (Code P) for left side delivery, price revised at £1 following the abolition of extra charges in September 1927. P190008652 £95



346

SG 418b 1924 1/2d Green. Superb unmounted o.g. horizontal pair, the left hand stamp showing the spectacular double print variety. A stunning example of one of the great rarities of GB George V philately.

G1564470 £12500



347

SG 420a 1924 1 1/2d Red brown. Very fine used horizontal strip of three, stamps two and three tête-bêche. The strip neatly cancelled and tied to small piece by a London W.C. wavy lined machine cancel for JY.1.1935. Scarce.

P190011226 £800



348

SG 420d 1924 1 1/2d Booklet pane with advertising labels (Wmk. Upright, Perf type I). Very fine unused o.g. example with good perforations, showing adverts "Telephone Service/Air Mails Letters and Parcels". Spec.

NB15(9). P178003390 £225



349

SG 422a 1924 2 1/2d Blue (No Watermark).

Very fine unused o.g. example of this scarce watermark variety. P190012888

£2800



350

SG 423var 1924 3d Pale violet (Wmk. Block Cypher Inverted). Very fine unused o.g. left hand marginal example. Spec.

N38(2)a. P190004041 £90



351

SG 423var wi 1924 3d Pale dull reddish violet (Wmk. Block Cypher, Inverted). Very fine unused o.g. B24(l) control block of six lightly mounted on top three stamps only, with a small tone stop on the bottom left hand stamp nevertheless a scarce multiple bearing two perfectly unmounted o.g. examples printed by Waterlow from plate 1b. Scarce. Spec. N38(3)a. P190004037 £550



352

SG 425wi 1924 5d Brown (Wmk. Block Cypher, Inverted). Very fine unused o.g. left hand marginal example. Spec N40(1)a. P190004152

£150



353

SG 427wi 1924 9d Olive-green (Wmk. Block Cypher, Inverted). Very fine unused o.g. bottom left hand corner marginal A24 perf type 2(E) control block of six printed by Waterlow, bottom three stamps unmounted o.g. Scarce. Spec N43(1)a. P190012890 £875



354

SG 427wi 1924 9d Olive-green (Wmk. Block Cypher, Inverted). Very fine unused o.g. example. Spec N43(1)a. P190004395 £120



355

SG 428var 1924 10d Dull greenish-blue (Wmk. Block Cypher). Very fine unmounted o.g. bottom left hand corner marginal L29 perf type 2(E) control block of six printed by Waterlow. Spec N44(3). P190004418 £450



356

SG 434/7 1929 1/2d-2 1/2d Postal Union Congress. Very fine set of four values in corner marginal L29 control strips of three, lightly mounted on the 1 1/2d strip the rest unmounted o.g. P190008046 £150



357

SG 438var 1929 £1 Postal Union Congress. Very fine used example neatly cancelled by a lightly struck cds, showing re-entry at top right from position R.2/3. P190011234 £650



358

SG 438 1929 £1 Postal Union Congress. Very fine used example neatly cancelled by a lightly struck cds. P190011232 £550



359

SG 439var 1935 1/2d Green (Small format, 17.9 x 21.7mm). Superb unmounted o.g. top right hand corner marginal horizontal pair showing "Horn" variety on right hand stamp Cyl.36 no dot, R.1/12. Spec. N47(1)d. P190011235 £475



360

SG 439 1935 1/2d Green.Very fine black on yellow-green coil leader (Code W) for lower end delivery with eight stamps attached and join to leader perforated 15. P190008904 £100



361

SG 439a 1935 1/2d Green (Wmk. Sideways).Very fine pair of green left side delivery coil tails for code P coils. One perforated Perf.7 with one stamp attached, the second attached with a perf 7 join then imperforate with four stamps attached. Scarce. P190008900 £90



362

SG 439cw 1935 1/2d Green (Small format,Wmk. Inverted).Very fine unmounted o.g. booklet pane of six, perf. type (P). P190008780 £130



363

SG 440wi 1934 1d Scarlet (Large format,Wmk. Inverted). Superb unused o.g. corner marginal "V34" cylinder "5R" control block of four (three stamps unmounted o.g.) perf type 2 (I/E).A very scarce watermark variety in this format. P190011247 £950



364

SG 440c 1935 1d Scarlet (Wmk. Sideways).Very fine black on deep carmine coil leader (Code O) for left side delivery with two stamps attached. Scarce. P190008954 £125



365

SG 440g 1935 1d Scarlet. Very fine unmounted o.g. Cyl. F7. (Dot) booklet pane of six, perf. type B4BE. P190008650 £175



366

SG 441 1934 1½d Red-brown (Intermediate format). Superb unmounted o.g. bottom left hand corner marginal V/34 control block of six from cylinder 106 (Dot), perf type 6B(E/P). P190008709 £70



367

SG 441d 1935 1½d Red-brown (Wmk. Sideways). Very fine black on brown coil leader (Code N) for left side delivery with seven stamps attached. Scarce. P190008999 £300



368

SG 441ew 1935 1½d Red-brown (Small format, Wmk. Inverted). Very fine unmounted o.g. booklet pane of four plus two adverts for "For Safety of Capital/Century Fixed Trust", perf. type (P). Spec. NB27a(9). P190008787 £250



369

SG 441e 1935 1½d Red brown "Photogravure" (Small format). Very fine and fresh unused o.g. booklet pane of four plus two labels with advert "For Safety of Capital/National Fixed Trust" showing Cylinder G28 no dot, with above average perforations (Perf type E). Spec. NB27(13). P190005463 £225



Shown at 82%

370

SG 442 1935 2d Orange (Wmk. Sideways). Very fine black on orange coil leader (Code T) for left side delivery with eight stamps attached. Very scarce. P190009012 £1250



Shown at 82%

371

SG 476/8c var 1937 2s.6d, 5s, 10s & 20s High Value Essays. Very fine set of four se-tenant essays for the proposed high values 2s.6d, 5s, 10s and 20s by W.T.Wiggins-Davies. Printed on hand made "Crowned/ Coronation Year 1937" watermarked paper (265 x 180) in slate blue with pencil annotation "Only sheet as this colour on hand made paper" at base of sheet. Scarce. Ex. "Mey". P190011817 £450



372

SG 442 1936-7 2d Orange (Small format). Very fine unused o.g. bottom left hand corner marginal pair of control blocks of six from cylinder 13 (Dot), from controls Z36 and A37 the latter showing "retouched leaves" variety in position R18/1. Spec. N55c. P190008739 £65



373

SG 445 1936 4d Deep grey-green (Small format). Very fine unused o.g. bottom left hand corner marginal Y/36 + 3 bars, control block of six from cylinder 11 (No dot), perf type 5(E/I). P190008752 £50



374

SG 446 1936 5d Yellow-brown (Small format). Very fine unmounted o.g. bottom left hand corner marginal Y/36, control block of six from cylinder 5 (Dot), perf type 5(E/I). P190008753 £75



375

SG 456 1935 2½d Blue "Silver Jubilee". Very fine unmounted o.g. W/35 Cyl.34 (dot) control block of six perf type 5(E/I). P190009205 £80



376

SG 457s 1936 ½d Green "Definitive". Very fine unmounted o.g. example overprinted "SPECIMEN" type 32. The first example we have handled in over twenty years. Spec. P1v. 2019 BPA Cert. P190011308 £950



377

SG 459aw 1936 1½d Red brown (Wmk. Inverted). Very fine unmounted o.g. booklet pane of four plus two labels with "For Safety of Capital/Century Fixed Trust (See last page)" advertising labels (Perf Type I), excellent perforations. Spec. PB5a(9). P190009275 £125



378

SG 461s 1937 1½d Coronation. Superb unused o.g. example overprinted "SPECIMEN" type 32, mounted on a piece of buff printers record book paper endorsed below with the date of issue "Issued 13 May 1937". A wonderful piece. Spec. QCom1t. 2019 BPA Cert. Ex. "Mey". P190011309 £850



379

SG 462/75s 1937 1/2d-1s "Definitive". Superb unused o.g. set of thirteen overprinted "SPECIMEN" (1/2d, 1d & 1 1/2d type 32), (2d & 3d type 26) & (4d, 5d, 6d, 7d, 8d, 9d, 10d & 1s type 23) each mounted on a piece of buff printers record book paper endorsed below with their dates of issue, with an additional 2 1/2d value without specimen overprint. A magnificent set. 2010 BPA Cert. Ex. "Mey". P190011310 £4500



380

SG 462I 1937 1/2d Green. Superb unmounted o.g. cylinder E10 no dot booklet pane of six with excellent perforations. Perf type B4A(E). Spec. QB1. P190006363 £80



381

SG 464I 1937 1 1/2d Red-brown. Superb unmounted o.g. cylinder G28 dot booklet pane of six with excellent perforations. Perf type B4A(I). Spec. QB21. P190006384 £75



382

SG 464b 1937 1½d Booklet pane (Wmk. Upright, Perf type B4A(l)). Very fine unmounted o.g. example with advert "Saving is Simple/Home Safe" showing cylinder "G18." dot. Spec. QB23(10). P189005660 £180



383

SG 464l 1937 1½d Red-brown. Superb unmounted o.g. cylinder G30 no dot booklet pane of six with excellent perforations. Perf type B3(l). Spec. QB21. P190006386 £85



384

SG 470var 1939 6d Purple "Definitive". Very fine unused o.g. left hand marginal control Q/45, cylinder 33 no dot example overprinted "CANCELLED" type 33. Very scarce, the first example we have handled in over twenty years. Spec. Q22t. Ex. "Mey". 2019 BPA Cert. P190011335 £475



385

SG 471var 1939 7d Emerald-green "Definitive". Very fine unused o.g. left hand marginal control S/46, cylinder 10 dot example overprinted "CANCELLED" type 33. Very scarce, the first example we have handled in over twenty years. Ex. "Mey". Spec. Q23t. P190011336 £475



386

SG 475 1939 1s Bistre-brown. Superb unmounted o.g. bottom left hand corner marginal cylinder 19 dot block of six Perf type 5(E/l). P190006418 £150



387

SG 476/8c 1939-48 2s6d-£1 "Arms" high values. Very fine unmounted o.g. set of six. P190011248 £425



388

SG 479/84s 1940 ½d-3d Centenary of the first adhesive Postage Stamps. Very fine unmounted o.g. set of six (lightly mounted on 1½d value) each overprinted "SPECIMEN" type 23. 2d & 2½d values with light gum creasing nevertheless a spectacular complete set of the utmost rarity. 2010 BPA Cert. P190011355 £3750



389

SG 488I 1942 2d Pale orange. Very fine unmounted o.g. cylinder H23 dot booklet pane of six with excellent perforations. Perf type B6(le). Spec. QB30. P190006391 £85



390

SG 485var 1941 1/2d Pale green "Definitive". Very fine unused o.g. left hand marginal control P/44, cylinder 132 no dot example overprinted "CANCELLED" type 33. Very scarce, the first example we have handled in over twenty years. Spec. Q2t. Ex. "Mey". 2019 BPA Cert. P190011369 £475



391

SG 486var 1942 1d Pale scarlet "Definitive" (Type I). Very fine unused o.g. left hand marginal control R/45, cylinder 122 dot example overprinted "CANCELLED" type 34. Very scarce, the first example we have handled in over twenty years. Spec. Q5u. Ex. "Mey". 2019 BPA Cert. P190011371 £475



392

SG 488I 1942 2d Pale orange. Very fine unmounted o.g. cylinder H32 dot booklet pane of six with good perforations. Perf type B6(le). Spec. QB30. P190006395 £85



393

SG 490var 1941 3d Pale violet "Definitive". Very fine unused o.g. left hand marginal control Q/45, cylinder 28 no dot example overprinted "CANCELLED" type 33. Very scarce, the first example we have handled in over twenty years. Spec. Q17t. Ex. "Mey". 2019 BPA Cert. P190011373 £475



394

SG 491/2s 1946 2 1/2d-3d Victory. Superb unused o.g. bottom right hand corner marginal set of two overprinted "SPECIMEN" type 30, mounted on a piece of buff printers record book paper endorsed below with the date of issue "Issued 11.6.46 (twice)". A wonderful piece, the first pair we have handled in over twenty years. Spec. QCom8/9u. 2019 BPA Cert. P190011375 £1350



395

SG 495/8s 1948 2½d-1s Olympic Games. Superb unused o.g. set of four overprinted "SPECIMEN" type 26. Very scarce set, believed to be one of only 2 - 3 sets in private hands and the only set we have handled in over twenty years. Ex. Sabey. 2015 PTS Cert. P190011376 £2000



396

SG 503I 1941 ½d Pale orange. Superb unmounted o.g. cylinder E85 dot booklet pane of six with above excellent perforations. Perf type B6(l). Spec. QB7. P190006367 £40



397

SG 504IW 1953 1d light ultramarine (Wmk. Inverted). Superb unmounted o.g. booklet pane of six with excellent perforations. Perf type B3(l). Spec. QB15a. P190006374 £45



398

SG 504f 1951 1d Light ultramarine. Very fine unmounted o.g. booklet pane of six, perf type (l). Spec. QB15. P190011427 £40



399

SG 505b 1951 1½d Pale green. Very fine unmounted o.g. Cyl. G4 (no dot) booklet pane of six, perf type B3(l). Spec. QB26. P190011424 £70



400

SG 506d 1951 2d Pale red-brown. Very fine unmounted o.g. booklet pane of six, perf type (l). Spec. QB31. P190011425 £40



401

SG 507var 1951 2½d Pale scarlet. Very fine unmounted o.g. right hand marginal block of six showing a paper join affecting the two central stamps, due to a pre-printing paper fold necessitated by the join the two central stamps show the watermark upright at the top, inverted along the centre and upright once more at foot. An unusual and quite spectacular variety. P190011252 £450



402

SG 507c 1951 2½d Pale scarlet. Very fine unmounted o.g. Cyl. J70. (no dot) booklet pane of six, perf type B3(l). Spec. QB34. P190011423 £60



403

SG 572mb 1961 1½d Green (Wmk. Sideways crown to left). Very fine unmounted o.g. booklet pane of four with good perforations on cream paper. Perf type (AP). Spec. SB68. P190006002 £50



404

SG 610l 1961 ½d Orange-red (Phosphor issue, Wmk. Sideways crown to right). Very fine unmounted o.g. booklet pane of four with good perforations. Perf type (l). Spec. SB18a. P190005972 £75



405

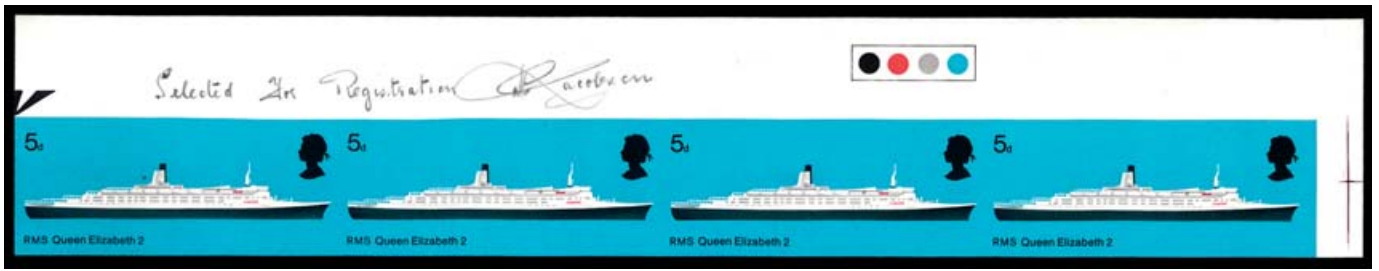
SG 715/6pvar 1967 9d-1s6d E.F.T.A. (Phosphor). Superb unmounted o.g. left hand marginal set of two imperforate imprimaturs, each stamp with a "BPMA" handstamp on reverse. Scarce. P14514168 £2000



Shown at 92%

406

SG 599/609 1959 1/2d-4 1/2d "Wildings" (Phosphor-graphite). Superb unmounted o.g. set of sixteen in corner marginal cylinder blocks of six of all possible watermark St Edwards Crown Phosphor Graphite cylinders and perforation types. 1/2d cyl 5 no dot E/P & I/P, 1d cyl 8 no dot E/P & I/P, 1 1/2d cyl 21 no dot E/P & I/P, 2d cyl 17 no dot E/P & I/P, 2 1/2d cyl 49 no dot E/P & I/P, 3d cyl 11 no dot E/P & I/P, 4d cyl 6 dot & no dot both E/I and 4 1/2d cyl 6 dot & no dot both E/I. Difficult set cat £1800 as cylinders. P190011822 £1500



Shown at 70%

407

SG 778var 1969 5d British Ships. Superb unmounted o.g. top right hand corner marginal "Traffic Light" horizontal strip of four imperforate imprimaturs endorsed and signed "Selected for Registration" in margin, each stamp with a "BPMA" handstamp on reverse. Scarce. PI4514194 £4500



408

SG X900 1984 13p Pale chestnut (1 Centre band, FCP/PVAD). Superb unmounted o.g. bottom left hand corner marginal cylinder 7 dot (Phosphor 20 dot) block of six showing 17 pin perforation variety between position R.18/1 & 18/2. Spec. U218. PI90011838 £50



409

SG X952 1983 17p Grey-blue (ACP/PVAD). Superb unmounted o.g. bottom left hand corner marginal cylinder 10 dot block of six showing 17 pin perforation variety between positions R.18/1 & 18/2. Spec. U247. PI90011842 £160



410

SG X961var 1983 20½p Ultramarine (FCP, PVAD). Very fine unmounted o.g. cylinder 1 dot bottom left hand corner marginal block of six displaying seventeen pin perforation variety. Scarce positional piece displaying this wonderful perforation variety. Spec. U278c. PI90011303 £1300



411

SG X971var 1984 26p Rosine (ACP, PVAD). Very fine unmounted o.g. cylinder 2 dot bottom left hand corner marginal block of six displaying seventeen pin perforation variety between bottom pair. Scarce positional piece displaying this wonderful perforation variety. Spec. U297c. P190011305 £1000



412

SG X975a 1983 28p Deep violet (PCP/PVAD). Superb unmounted o.g. horizontal imperforate pair. Scarce, Pierron records between 10-15 mint pairs. 2019 BPA Cert. P190011418 £2400



413

SG X977a 1991 28p Deep bluish grey (ACP/PVAD). Superb unmounted o.g. top marginal horizontal imperforate pair. Scarce, Pierron records between 10-20 mint pairs. 2019 BPA Cert. P190011419 £3000



414

SG X985 1986 34p Ochre-brown (ACP/PVAD). Very fine unmounted o.g. cylinder 2 dot bottom left hand corner marginal block of six displaying seventeen pin perforation variety between Positions R.19/1 & R.19/2. Spec. U339. P190011853 £42



415

SG X992var 1980 50p Ochre-brown (FCP, PVAD). Very fine unmounted o.g. cylinder 21 dot bottom left hand corner marginal block of six displaying seventeen pin perforation variety between bottom pair. Scarce positional piece displaying this wonderful perforation variety. Spec. U427c. P190011306 £400



416

SG I479a 1990 20p R.S.P.C.A. Superb unmounted o.g. example with silver (Queen's head & face value) omitted, offered with a normal example for comparison. Scarce. P190011300 £650



417

SG Y1694a 1993 30p Deep olive-grey (NFCP/PVA). Superb unmounted o.g. top left hand corner marginal horizontal imperforate pair. Very scarce. 2019 BPA Cert. P190011420 £1400



418

SG I888a 1995 25p Pioneers of Communication. Superb unmounted o.g. example with silver (Queen's head and face value) omitted. Offered with normal for comparison. Scarce. P190011302 £950



419

SG T5s 1877 4d Sage-green "Telegraph" Pl. I. Very fine unmounted o.g. example lettered OK, overprinted "SPECIMEN" type 9. Spec L211s. P190012989 £75



420

SG T6s 1877 6d Grey "Telegraph" Pl.I. Very fine unmounted o.g. left hand marginal example lettered AC, overprinted "SPECIMEN" type 9. Spec L212s. P190012990 £75



421

SG T9s 1880 1s Brown orange Pl.I.0. (Wmk. Spray). Very fine well centred unmounted o.g. block of four lettered RE-SF, overprinted "SPECIMEN" type 9. A very scarce multiple. P190012984 £500



422

SG T11s 1877 3s Slate-blue "Telegraph" Pl.I. Very fine unmounted o.g. left hand marginal example lettered PE, overprinted "SPECIMEN" type 9. Spec L229s. P190012996 £120



423

SG T13s 1876 5s Rose "Telegraph" Pl.I. Very fine unmounted o.g. top left hand corner marginal block of four lettered EA-FB, overprinted "SPECIMEN" type 9. A rare multiple, especially so fine. Spec L231s. P190012999 £1100



424

1925 Circular Delivery Company. Very fine reprinted composite die proof for eight different cities in black on thick cartridge paper (253 x 125mm). Wonderful quality. P190011434 £275



425

1786-1800 1d Red Hair Powder Tax. Very fine example for Powder priced at or below 2s per lb, Die 126, 'unused' from the second recut of plate H-P 3, dividing lines visible on two sides within four good to large margins.

Insignificant corner creasing, still very fine for this delicate and exceptionally rare revenue, free of the oxidisation which so often plagues the colour of these stamps. Booth 1. [From 1786-1800, Hair Powder was one of a multitude of commodities taxed by William Pitt the Younger to avoid national bankruptcy following the American War of Independence.

The extortionate charge led to a change in fashion; the tax was abolished in 1800 as less than 1,000 citizens were still using Hair Powder.] P190010925 £650



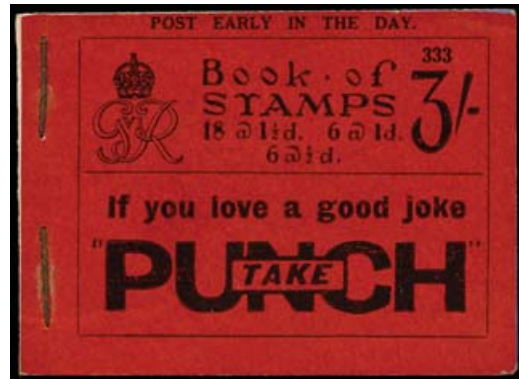
426

SG BD13 1940 2s6d Booklet (Edition No.6). Very fine example with excellent perforations, all panes with cylinder numbers. Showing cylinder E41 no dot on 1/2d pane, H2 no dot on 2d pane and J3 no dot on 2 1/2d pane. Scarce so fine. P190011260 £1850



427

SG BD15 1940 2s6d Booklet (Edition No.14). Very fine example. All panes with cylinder numbers, E42 no dot on 1/2d pane, H2 no dot on 2d pane and J5 no dot on 2 1/2d pane also showing a pale blue Fords blotting paper sample. P190011262 £975



428

SG BD21 1937 3s Booklets (Edition No. 333). An exceptionally fine and fresh example bound with staples instead of the normal stitching. All panes watermark inverted except 1d pane. A lovely example of this rare stapled George VI booklet. P190011269 £2000



429

SG BD25 1940 5s Booklets (Edition No. 1). An exceptionally fine and fresh example originally stitched and subsequently bound with staples bearing a portion of the original back cover still attached by stitching and a complete second back cover attached solely by staples. A magnificent booklet variety. P190011276 £2250



430

SG BD26 1943 5s Booklet (Edition No. 30, Unglazed buff cover). An exceptionally fine and fresh example of this rare George VI Booklet. P190011278 £2200



431

1899 1d, 2d, 3d, 4d & 6d Great Northern Railway Newspaper Parcel labels (Perf. 11). Very fine unused o.g. set five printed in green on white paper overprinted with bold black denominations. Ewen #21-25. P190009699 £125



432

1900 1d, 2d, 3d & 4d Great Western Railway Newspaper Parcel labels (Perf. 11). Very fine unused o.g. set of four die ii examples with narrow "d" printed in black on yellow, blue, green & white paper with black control numbers at foot. Ewen #40-43. P190009702 £125



433

C.1905 1d & 2d Great Western & Great Central Joint Railway Newspaper Parcel labels (Perf. 12). Superb unused o.g. set of two examples. 1d printed in black on yellow, gummed perforated paper and the 2d printed in black on blue, gummed, perforated paper. Both overprinted "G.W. & G.C. JT" in violet. Scarce. P190012598 £75



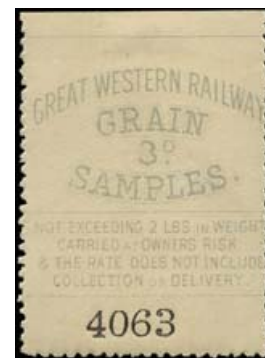
434

1882 6d Great Western Railway Newspaper Parcel labels (Perf. 12). Very fine unused o.g. die ii example with narrow "d" printed in red on white paper with black control "444103" at foot. Ewen #39. P190009700 £50



435

1868 Great Western Railway Newspaper Parcel label (Rouletted, Die I). Very fine unused example with "Newspapers" in lower case, printed in black on orange-red rouletted paper overprinted with a green vertical bar indicating "One Newspaper" only. Scarce. Ewen #51. P190012592 £55



436

1870 Great Western Railway Grain Samples (Perf 12). Superb unused o.g. example printed in grey on white, gummed, perforated paper with control number "4063" in black at foot. Ewen #71. P190012595 £150



437

C.1870 1d, 2d, 3d, 6d, 1s & 2s6d Great Western Railway Shipment Charge labels (Perf. 12). Superb unused o.g. set of six printed in black on white, blue, rose, green, yellow & lilac paper with black control numbers at foot. Scarce and attractive set. Ewen #81-86. P190012599 £375



438

1900 1d Hull & Barnsley Railway Co. Newspaper Parcel label (Perf 11). Very fine unused o.g. example printed in brown on white, gummed, perforated paper. Ewen #6. P190012603 £35



439

1885 1/2d Hull, Barnsley & West Riding Junction Railway & Dock Company Newspaper label (Perf 11). Very fine unused example printed in carmine on white, gummed, perforated paper. Ewen #1. P190012601 £30



440

1885 3d Hull, Barnsley & West Riding Junction Railway & Dock Company Newspaper parcel label (Perf 11). Very fine unused o.g. example printed in blue on white, gummed, perforated paper. Ewen #5. P190012602 £65



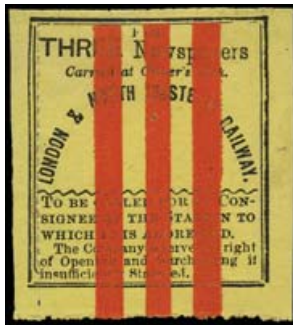
441

1900 1/2d, 1d, 2d & 3d Lancashire, Derbyshire & East Coast Railway Newspaper Parcel labels (Perf. 10). Very fine unused o.g. set of four examples printed in black, blue, red & brown on white paper with black control numbers at foot. Ewen #1-4. P190012610 £110



442

1902 1/2d, 1d & 2d Furness Railways Newspaper parcel label (Rouletted). Very fine unused o.g. set of three examples printed in carmine on white, gummed paper with "TO L & N.W. & FURNESS JOINT LINE ONLY" overprint in black with control numbers at above. Ewen #37-39. P190012619 £75



443

C.1865 London & North-Western Railway Newspaper label (Rouletted). Very fine unused o.g. example, printed in black on yellow rouletted paper overprinted with three vertical red bars indicating "Three Newspapers". Scarce. Ewen #31. P190012624 £60



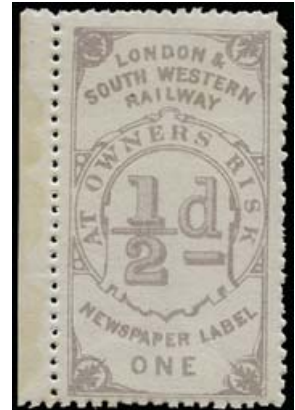
444

1895 London & North-Western Railway Parcel label (Rouletted). Very fine unused o.g. example, printed in rose on white rouletted, gummed paper with black control number "F530346" at foot. Ewen #57. P190012625 £25



445

C.1890 1/2d, 1d, 2d, 3d, 4d & 6d London & South-Western Railway Newspaper labels (Perf 10, Die III). Very fine unused o.g. set of six printed in lilac, on white perforated paper with contract number "626" in design at top right with black control numbers at foot. Scarce set so fine. Ewen #34-39. P190012655 £150



Shown at 67%

446

C.1868 1/2d London & South-Western Railway Newspaper label (Perf 10, Die I). Very fine unused o.g. left hand marginal example printed in lilac on bluish, perforated paper. Attractive. Ewen #16. P190012645 £50



447

1902 1/2d, 1d, 1 1/2d, 2d, 3d & 4d London, Brighton & South Coast Railway Newspaper labels (1/2d Perf 14, the rest Perf 10). Very fine unused o.g. set of six printed in blue, on white perforated paper with black control numbers at foot. Scarce set so fine. Ewen #1-6. P190012675 £150



448

1905 2d, 3d, 4d & 6d Manchester Corporation Tramways Parcel Prepaid Stamps (Rouletted). Superb unused o.g. set of four examples printed in red, blue, green & violet on white, gummed paper with black control numbers at foot. Very attractive set with lovely fresh colour. Ewen #2-5. P190012680 £150



449

1905 2d & 3d Manchester Corporation Tramways Parcel Department Paid labels (Rouletted). Superb unused o.g. set of two examples printed in pink endorsed "Inner area" (2d) and blue endorsed "Outer area" (3d) both on white, gummed paper with black control numbers. Attractive set. Ewen #6-7. P190012687 £75



450

C.1868 1/2d Manchester & Milford Railway Newspaper label (Perf 11). Superb unused o.g. example printed in red on white paper, overprinted "1 1/2d" in black and endorsed "ONE NEWSPAPER". Ewen #1. P190012678 £50



451

C.1870 1d Manchester & Milford Railway Prepaid Newspaper Parcel label (Perf 11). Superb unused o.g. example printed in black on pink, gummed paper without control number. Ewen #5. P190012679 £50



452

C.1880 Manchester, Sheffield & Lincolnshire Railway Newspaper label (Perf 13). Very fine unused example printed in blue on white perforated paper, overprinted in blue "FOR SINGLE NEWSPAPERS ONLY" with control number "554" in black at left. Scarce. Ewen #15. P190012694 £55



453

C.1868 Northampton & Banbury Junction Railway Newspaper label (Perf 10). Very fine unused example endorsed "For 1 Newspaper only". Printed in black on lilac perforated paper with a single vertical green band indicating one newspaper. Ewen #2. P190013503 £40



454

C.1900 1d, 2d, 3d, 4d & 6d Maryport and Carlisle Railway Company Newspaper Parcel labels (Perf. 11). Very fine unused o.g. set of five printed in red, green, blue, yellow and brown on white, gummed paper paper each with control numbers in black at foot. 1d example with a small thin not detracting from this magnificent set. P190012702 £175



455

C.1890 1/2d, 1d, 2d, 3d, 4d & 6d Metropolitan Railway Newspaper parcel labels (1/2d & 1d Perf 14, all other values Perf 10). Very fine unused o.g. set of six printed in vermilion on white perforated paper with black control numbers at foot. Scarce set so fine. Ewen #34-39. P190012712 £200



456

C.1906 1/2d, 1d, 2d & 3d Metropolitan & Great Central Railway Joint Committee Newspaper parcel labels (Perf 10). Very fine unused o.g. set of four examples printed in green on white perforated paper with black control numbers at foot. The same design as Ewen #1-4 but printed in green not blue. P190012713 £125



457

1866 1/2d Midland Railway Prepaid Newspaper label (Perf 12 1/2). Very fine unused o.g. right hand marginal example printed in vermilion on white, gummed paper with black control number "111510" at left. Ewen #12. P190012809 £60



458

1885 1s Midland Railway Prepaid Newspaper Parcel label (Die I, Perf 10). Very fine unused o.g. example with background of lines slanting up, printed in orange on white, gummed paper with black control number "A83990" at left. Scarce. Ewen #26. P190012815 £110



459

1895 5d Midland Railway Prepaid Newspaper Parcel label (Die II, Perf 10). Very fine unused o.g. example with background of lines slanting down, printed in orange on white, gummed paper with black control number "48490" at left with serial letter "A". Scarce. Ewen #38. P190012828 £75



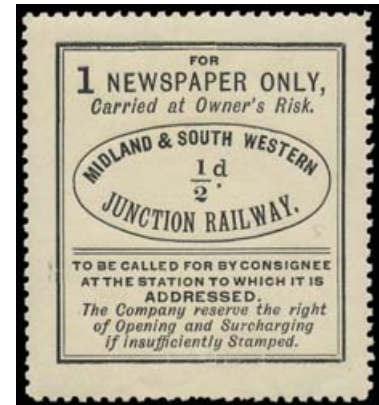
460

1895 5d Midland Railway Prepaid Newspaper Parcel label (Die II, Perf 11). Very fine unused o.g. example with background of lines slanting down, printed in orange on white, gummed paper with black control number "56268" at left with serial letter "A". Scarce. Ewen #40. P190012829 £110



461

C.1896 1/2d Midland & Great Northern Joint Railways Newspaper label (Perf 11 1/2). Very fine unused imperforate proof printed in red on white paper, overprinted "1/2d" in black and endorsed "ONE NEWSPAPER" and "EASTERN SECTION" under arms. Listed by Ewan as printers waste. Ewen #6. P190013418 £50



462

C.1906 Midland & South Western Junction Railway Newspaper label (Perf 10). Very fine unused example printed in black on white perforated paper endorsed at top "For 1 Newspaper Only". Very Scarce, this independent railway built to form a north-south link between the Midland Railway and the London and South Western Railway is not mentioned by Ewen. P190013420 £50



463

C.1903 1/2d & 1d Midland & Great Northern Joint Railways Newspaper labels (Perf 11, Re-drawn Die). Very fine unused set of two printed in red (1/2d) & lilac (1d) on white perforated paper, overprinted "1/2d" in black and "1d" in lilac and endorsed "One Newspaper" and "Two Newspapers" respectively. An attractive set of these scarce re-drawn dies by Sir J. Causton & Sons. Ewen #9-10. P190013419 £50



464

C.1891 1d Midland & South Western Junction Railway Newspaper Parcel Label (Perf 12). Very fine unused example printed in black on yellow, perforated paper showing control number "230" at foot. Very Scarce, this independent railway built to form a north-south link between the Midland Railway and the London and South Western Railway is not mentioned by Ewen. P190013422 £75



465

C.1906 Midland & South Western Junction Railway Newspaper label (Perf 10). Very fine unused top marginal example printed in black on white perforated paper endorsed at top "For 1 Newspaper Only". Very Scarce, this independent railway built to form a north-south link between the Midland Railway and the London and South Western Railway is not mentioned by Ewen. P190013441 £50



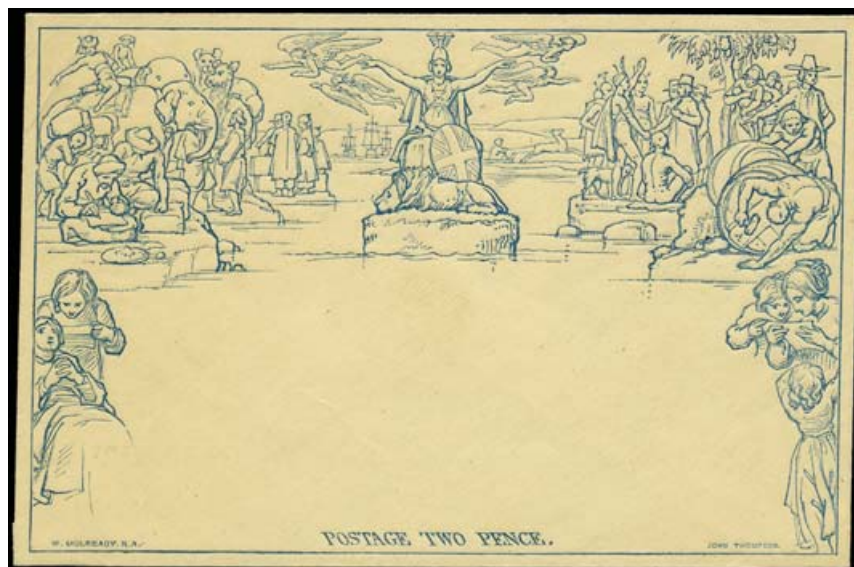
466

1891 2d Green Taff Vale Railway letter stamp. Very fine unused o.g. block of six with vertical black controls at the left hand side of each stamp. Scarce multiple, Only 10,000 Taff Vale Letter stamps were printed and issued in 1891 and were in use until the amalgamation into the Great Western Railway in 1922. P190011453 £60



467

1891-1922 2d Green Taff Vale Railway letter stamps. Very fine group of six each with differing surcharge overprints including "3" 15mm in purple, "3" 19mm in purple, "3" 19mm in purple with "4" applied in red manuscript, "3" 19mm in purple with additional "4" handstamp 19mm in purple, "4" 16mm in purple & "4" 19mm in red. A wonderful group. Only 10,000 Taff Vale Letter stamps were printed and issued in 1891 and were in use until the amalgamation into the Great Western Railway in 1922. P190011456 £275



468

SG ME2, ME4 1840 1d Mulready envelope (Forme 4, Stereo A177) & 2d Mulready envelope (Stereo A196). Very fine unused pair of Mulready's exceptionally fresh. P190010933 £800

Shown at 82%



Shown at 81%

469

1848 Uniform penny Post. Very fine entire sent from Bolton to Derby with a superb red "PAID/1" (LA 170) UPP handstamp at upper right with a matching Bolton dispatch cds at lower left for JA.18.1848. Backstamped by a blue Derby arrival cds for the following day. Very attractive. P190011460 £250



Shown at 81%

470

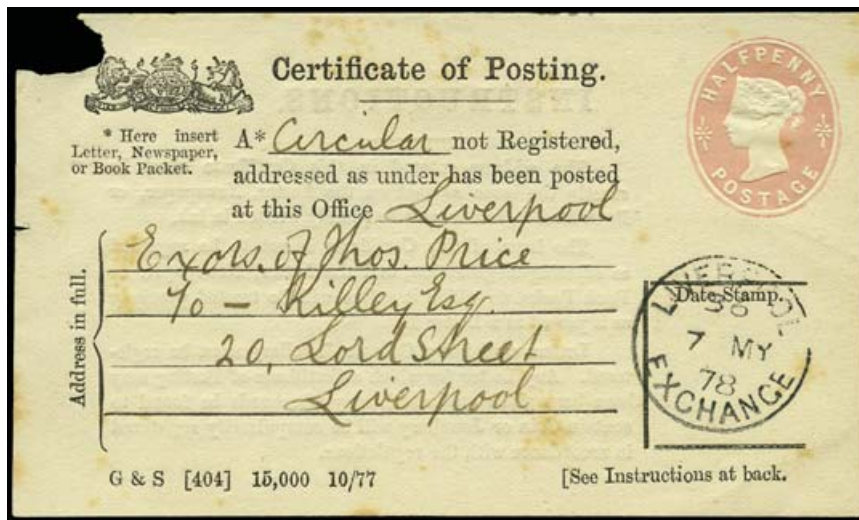
SG 3 1840 1d Grey-black Pl. Ia. Very fine used close to large four margin example lettered DK beautifully tied to a clean, fresh entire by a crisp red MC, sent from Rhydlewis to Middleton Hall, near Llandeilo with a Newcastle-Emlyn transit UDC on reverse. Dated internally for JY.30.1840. Very attractive Welsh usage. P190012901 £850



Shown at 81%

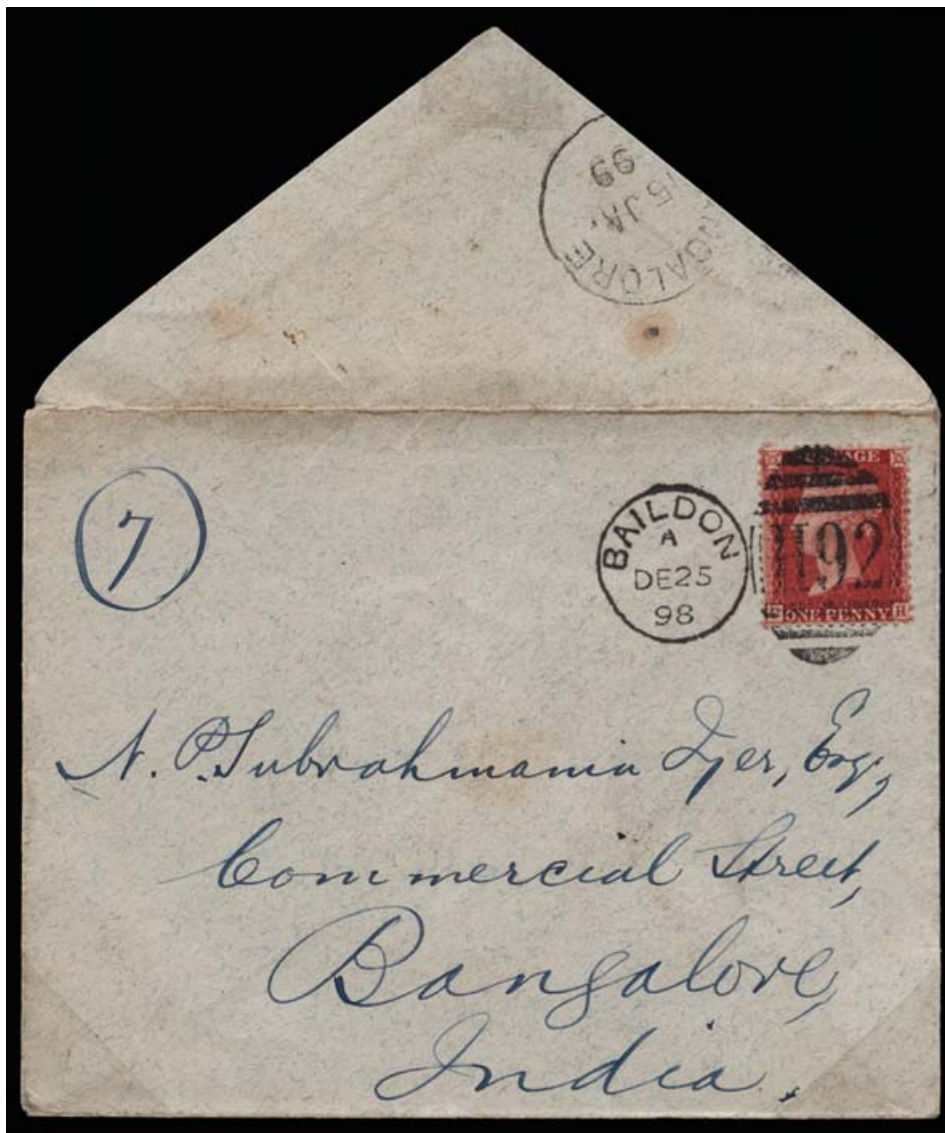
471

SG 117 1871 British Post Offices Abroad. Very fine envelope sent from Buenos Aires (Argentina) to Shrewsbury prepaid at the one shilling rate by a 1s Green Pl.4 (Wmk Spray, SG 117) neatly tied by a fine strike of the Buenos Aires type 12 "B32" numeral. Backstamped with a double-arc Buenos Aires dispatch cds for SP.14.1871 and a Shrewsbury arrival cds for OC.13.1871. Scarce. Spec. Z25. P190011874 £550



472

1877 1/2d Pink Certificate of Posting. Very fine used example cancelled by a Liverpool Exchange datestamp for MY.7.1878. Some light toning and a small eyelet fault due to removal from the receipt pad nevertheless a wonderful example without any of the usual creasing. Spec. CPP1a. P190010929 £110



473

SG 40 1898 Overseas Mail/Imperial Penny Post. Very fine envelope sent from Baildon, Yorkshire to Bangalore, India bearing a 1d Rose-red (SG40) lettered CH tied by a Baildon "H92" duplex for DE.25.1898, the first day of the Imperial Penny Postage rate. Backstamped by a Bangalore arrival cds for JA.15.1899. A remarkably clean and attractive Imperial Penny Post first day cover. P167004658 £2250



474

SG 43 1872 Advertising. Superb illustrated envelope from the "Carlisle Meat Biscuit Company" beautifully illustrated on front and rear and depicting various dog breeds. Franked with a 1d rose red P1.137, neatly tied by a London duplex for OC.7.1872. Addressed to Witham, Essex and backstamped accordingly the following day. A stunning piece of Victorian advertising. Illustrated in Bodily, Jarvis and Hahn on page 304. P190013237 £1250



475

SG 219 1908 Penny Post to the USA. Very fine commemorative envelope produced by the Junior philatelic society bearing a 1d scarlet (SG 219) neatly cancelled by a crisp London F.S.8. double ring cds for OC.1.1908 the first day of Penny Postage to the United States. Addressed to Columbus, Ohio with a matching arrival cds on reverse for OC.10.1908. Scarce first day usage. P190011160 £275



Shown at 75%

476

SG 216, 219 1901 1/2d Blue green & 1d Scarlet. Very fine used set of two, each neatly tied to an unfolded envelope by Woodford Green cds' for DE.31.1901. One day before official release. An attractive and unusual pre-release usage. P190011156 £425



Shown at 75%

477

SG 351 1914 Military Camp Mail. Very fine envelope addressed to Plymouth bearing a vertical pair of 1/2d Green's (SG 351) tied by a crowned maple leaf "Canadian Overseas/ Expeditionary Force/ Field Post Office" datestamp for OC.14.1914. the first day of issue. Used at the Devonport camp unlike the later strikes used at the Wiltshire camps. Very scarce. P190011004 £195



Shown at 75%

478

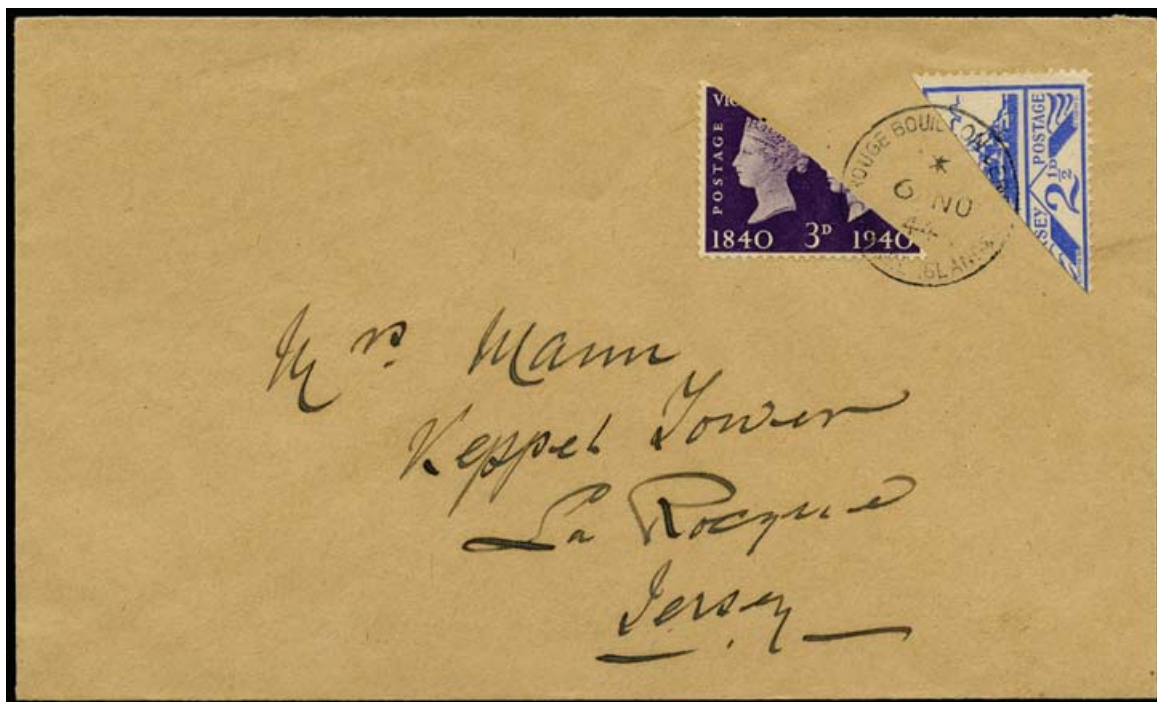
SG 415a, 418, 425, 429 1929 Registered/Air mail. Very fine cover to Lima, Peru bearing a 1/2d, 5d, 1s block cypher and a bottom marginal 2s6d pale brown (Bradbury printing) each neatly cancelled by a Dorking cds for OC.10.1929. Backstamped with Callao and Lima cds's for NO.1+2.1929. Cover endorsed "England-S. America 1st. Per Aquitania & USA-Peru Airmail.", the 3s11 1/2d rate paying 3s6d airmail plus 5/2d registration. Most attractive.

P190013153 £375



479

SG 420d 1924 1½d Red-brown Advertising Pane.Very fine example used in combination with a 1d scarlet on an Irish ½d green postal stationery envelope to Dodoma,Tanganyika all neatly cancelled by Paquebot/Dun Laoghaire cds's for DE.5.1931, the pane additionally tied by a Dodoma cds for JA.11.1932. Re-directed upon arrival back to Gosport, England. Dodoma and Daresalem cds's on reverse for DE.18.1931 and JA.13.1932 respectively. Scarce. Spec. NB15(12). P190013278 £280



480

SG 7,484 1944 Jersey bisect cover.Very fine cover bearing a bisected GB 3d violet (SG484) and Jersey 2½d blue (SG7) both neatly tied by a single Rouge Bouillon Jersey/Channel Islands cds for NO.6.1944.A very unusual and rare franking. P190009674 £225



MEAT BISCUIT FOR DOGS, made by the
 CARLISLE BISCUIT COMPANY, is undoubtedly the
 best and cheapest Food for Dogs that has ever been introduced.
 It is equally adapted for Sporting Dogs, Yard Dogs, or for Pets.
 It requires no Cooking, and without any other food, keeps Dogs
 in the highest condition. Many of the prize-taking Dogs at the
 last Birmingham Show, were fed from Puppies on this Biscuit
 It is excellent food for Poultry. Price 22s. per cwt.

Agent—THOS. STYLES, 92, Upper Thames St.

POSTAGE
 10 P. PENNA.

*Mr. Philip
 The Lawn
 Witham
 Essex*

"ALL GOING TO THE DOGS"

MEAT BISCUIT
FOR **D**OGS
 22/ PER CWT

MEAT BISCUIT
FOR **D**OGS
 22/ PER CWT

"POOR FELLOW"

HE SHALL HAVE A
 MEAT BISCUIT

399 Strand, WC2R 0LX, London

020 7557 4413 | gb@stanleygibbons.com | www.stanleygibbons.com

@StanleyGibbons

/StanleyGibbonsGroup

@StanleyGibbons